

 LIENZOS®

Wallmurals



PASSION





MEET THE

GEN

THUSI

ASTS

PASSION PORTRAIT

There are probably as many hobbies as people on the planet. In order to inspire you to claim your (rightful) space, we would like to introduce to you 10 enthusiasts, all with their own hobby rooms. Perhaps you know someone just like The Creator or The Philosopher, or – even better – you can imagine yourself sitting by that very desk.

Our wall murals will happily serve as cheerful backdrops to whatever side of you your space will reflect!

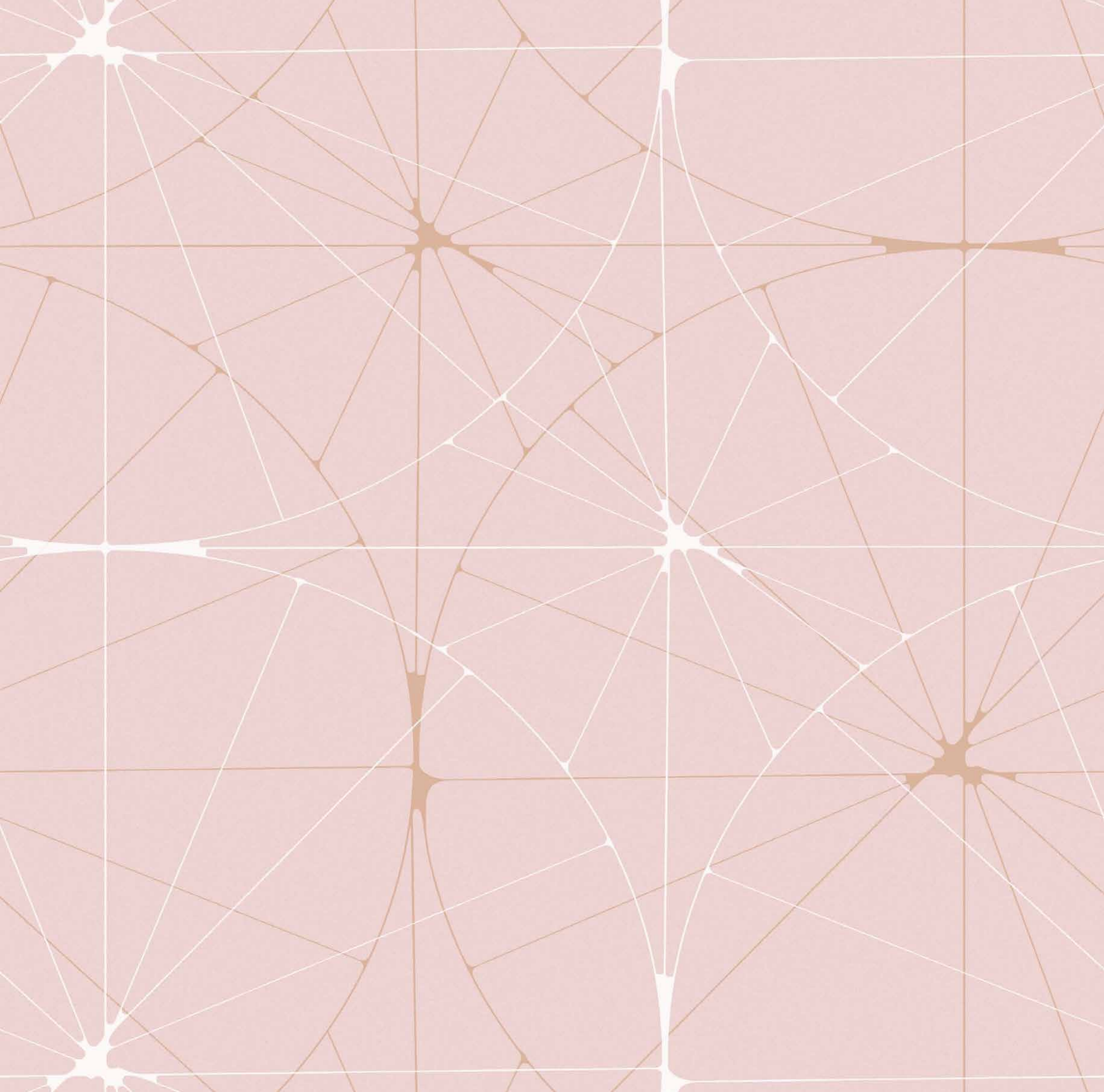
Meet: THE TAILOR | THE WRITER
THE GARDENER | THE SENSUOUS ONE
THE MUSICIAN | THE KID | THE ADVENTURER
THE PHOTOGRAPHER | THE PHILOSOPHER &
THE CREATOR

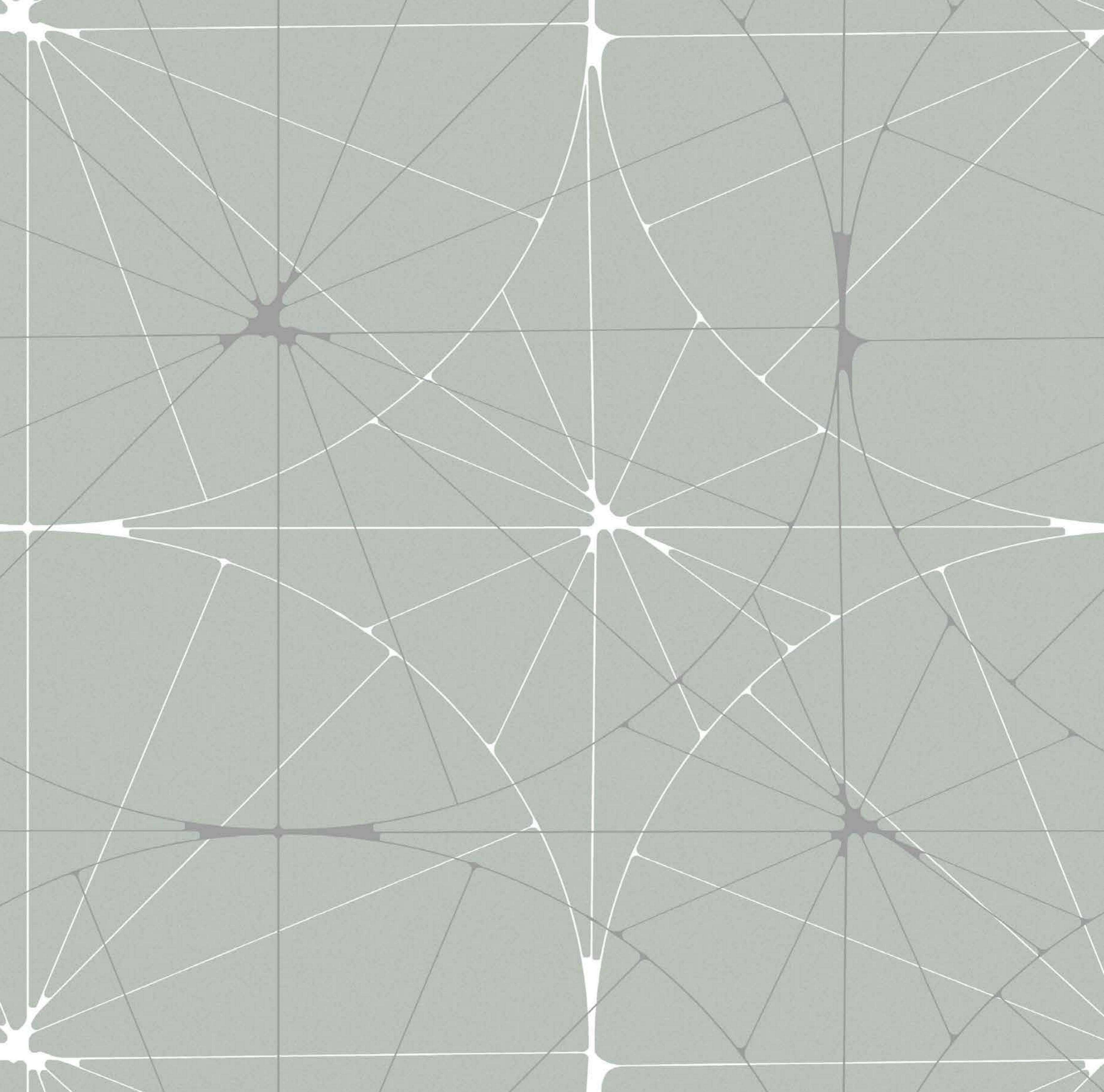
THE TAILOR

You are patient and excited alternately. This is the best and only mixture of moods when great ideas are to marry the actual fabric. Your combined design and sewing studio has its own specific order; others might not get it, but you know exactly where the right needles, threads, buttons and patterns are.



PERFECT FIT, POWDER PINK | R14113 







PERFECT FIT, MINT GREEN | R14112 



LEATHER RHOMBS | R14121 







LEATHER RHOMBS, VINTAGE | R14122 **R**

THE WRITER

You have a way with words. A love for typography, paper structures and books comes alongside the first love of words. This is your place to read other authors and give them a chance to “read” you in black ink. Start writing now!



TYPOMANIA | R13971 

ä

å

ä

g

i

ä

j

i

d

m

o

ö

ä

p

g

l

p

d

s

ä

a	ä	å	g	i
ä	j	i	d	m
o	ö	ä	p	g
l	p	d	s	a



Isn't it utterly remarkable what you can express with only a few letters? We think so, and to honour the beautiful shape of the letters, we created the Typomania wallpaper using a good old typewriter in order to get exactly the right feeling.



Do you want to write something special within the design of this wall mural? Use our design services to add a word, a name or a whole sentence!



BLANK PAGES | R13981

The white sheets and the black spaces practically billow forth in this high-contrast photo wallpaper, and whatever colour you bring in to the styling will definitely pop!



THE GARDENER

You know how to best make something grow – from the smallest seed to the biggest tree, you know how often it should be watered, what extra nutrition it might need and if it's a fan of the sun, penumbra or shadow. A room for you and your green thumb, voilà!



CLIMBING CLOROFYL | R13993 



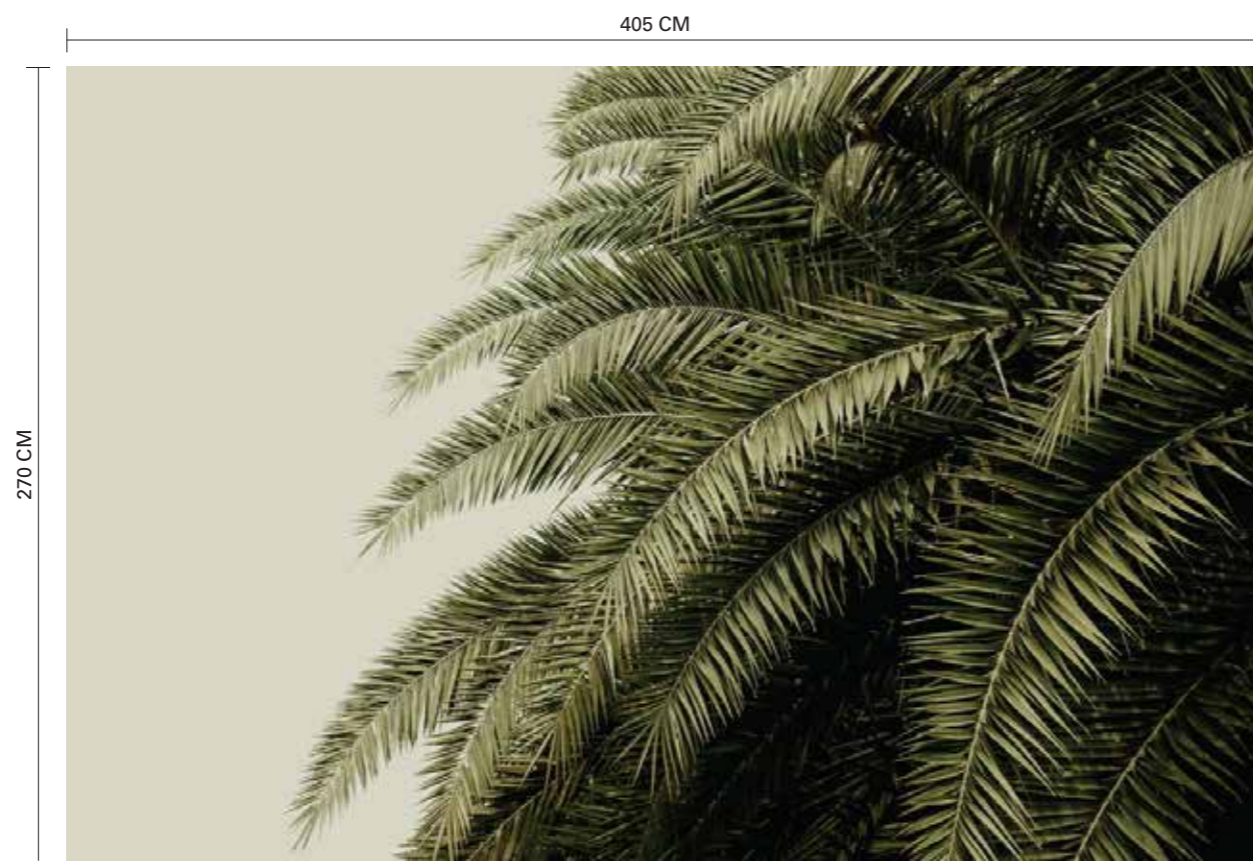




CLIMBING CLOROFYL, WOOD | R13992 **R**



LEAF LOVE | R14001



R14002 | LEAF LOVE, MIRRORED | 405X270 CM



R14001 | LEAF LOVE | 405X270 CM



Create a lush, green oasis in your room using this palm leaf wallpaper. Green is known to have a calming effect on the human mind. Place the wall murals as above to get a real green corner! A diagonal grid runs across the surface of photo mural for a softening effect.

THE SENSUOUS ONE

Sight, hearing, taste, smell and touch – those are the five senses and you are a tactile person who masters them all to perfection. Nothing passes you by and everything both interests and inspires you. Somehow. This is your place to sort out all the impressions and just breathe.



BIRCH BARK BRAIDS | R13931 







BIRCH BARK BRAIDS, WHITE | R13932 **R**



CUDDLE CLOUDS | R14011 

Got your head amongst the clouds? Get yourself a dreamy backdrop! Wallpaper one wall or all four of them; this wall mural is of course repeatable side-ways.



360 CM



270 CM

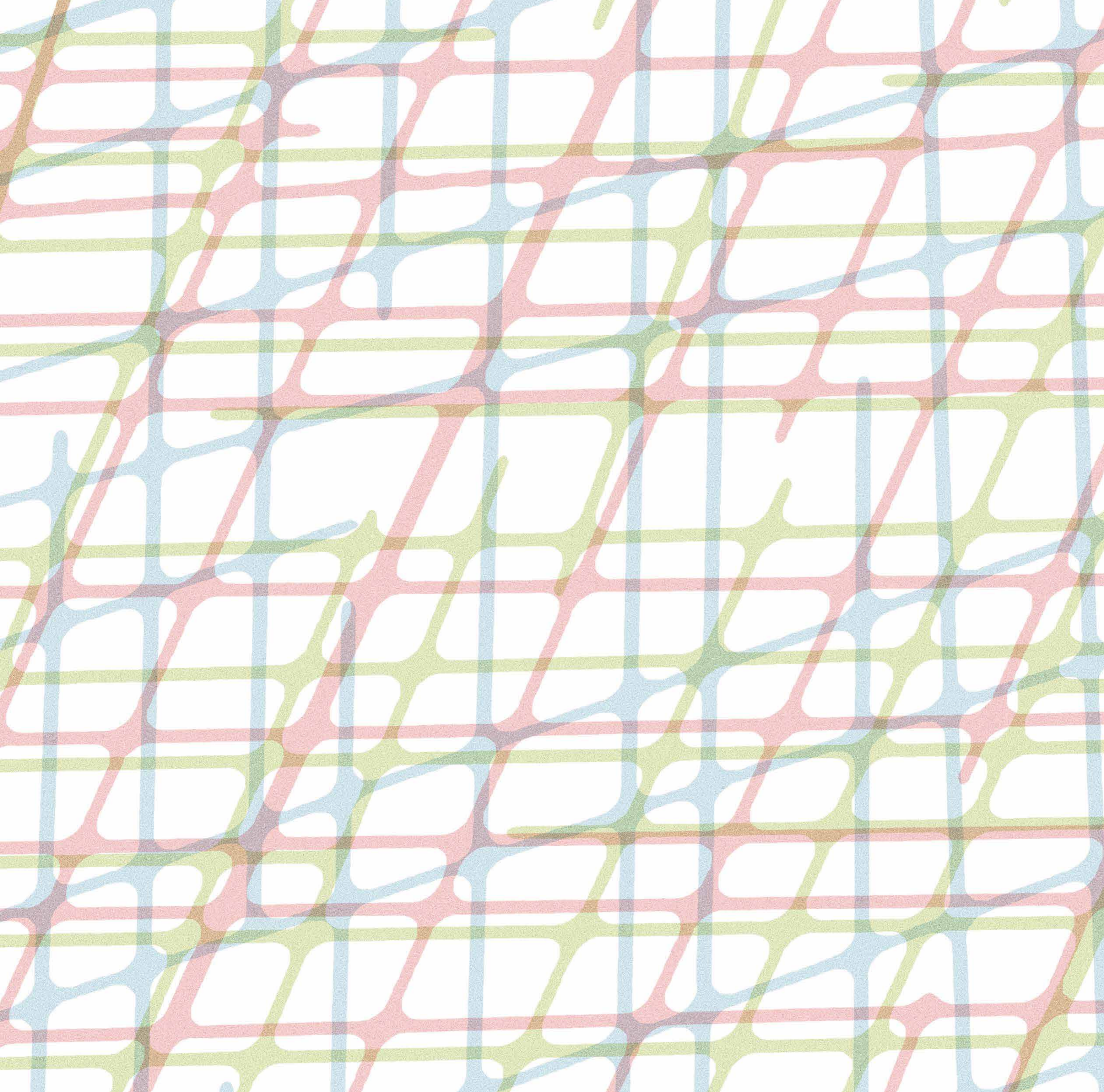
R14011 | CUDDLE CLOUDS | 360X270 CM 

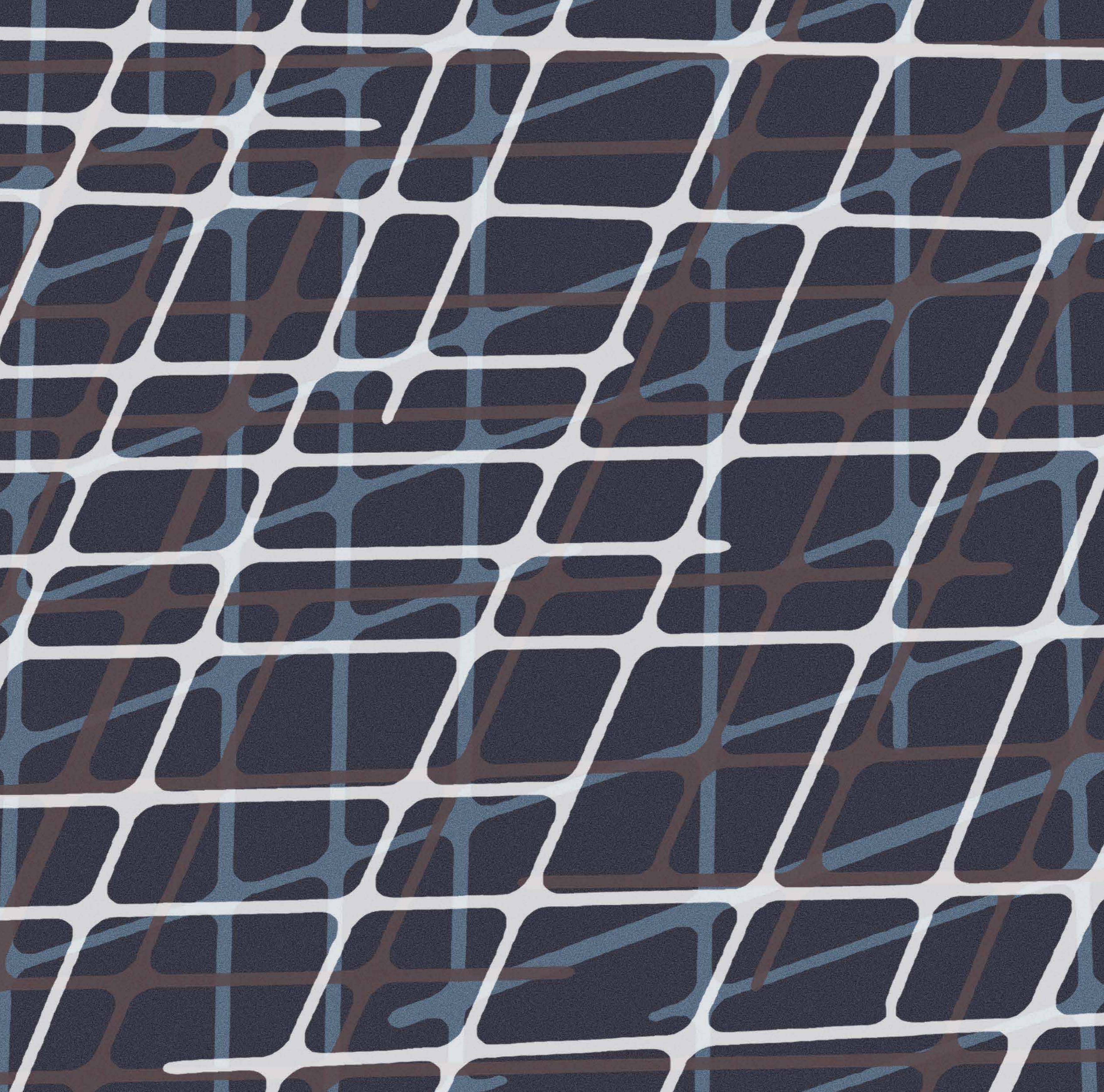
THE MUSICIAN

You have a never-ending, ever-changing soundtrack of your life. Old music, new music, your own music – you got it! Fill your music room with tunes that inspire you the most – you've got your own rhythm.



NOTE SHEETS | R14021 **R**







NOTE SHEETS, DENIM | R14024 



IN THE SPOTLIGHT | R14031



Place yourself and your hobby in the spotlight! Light is an excellent way of marking places or creating a feeling of space!

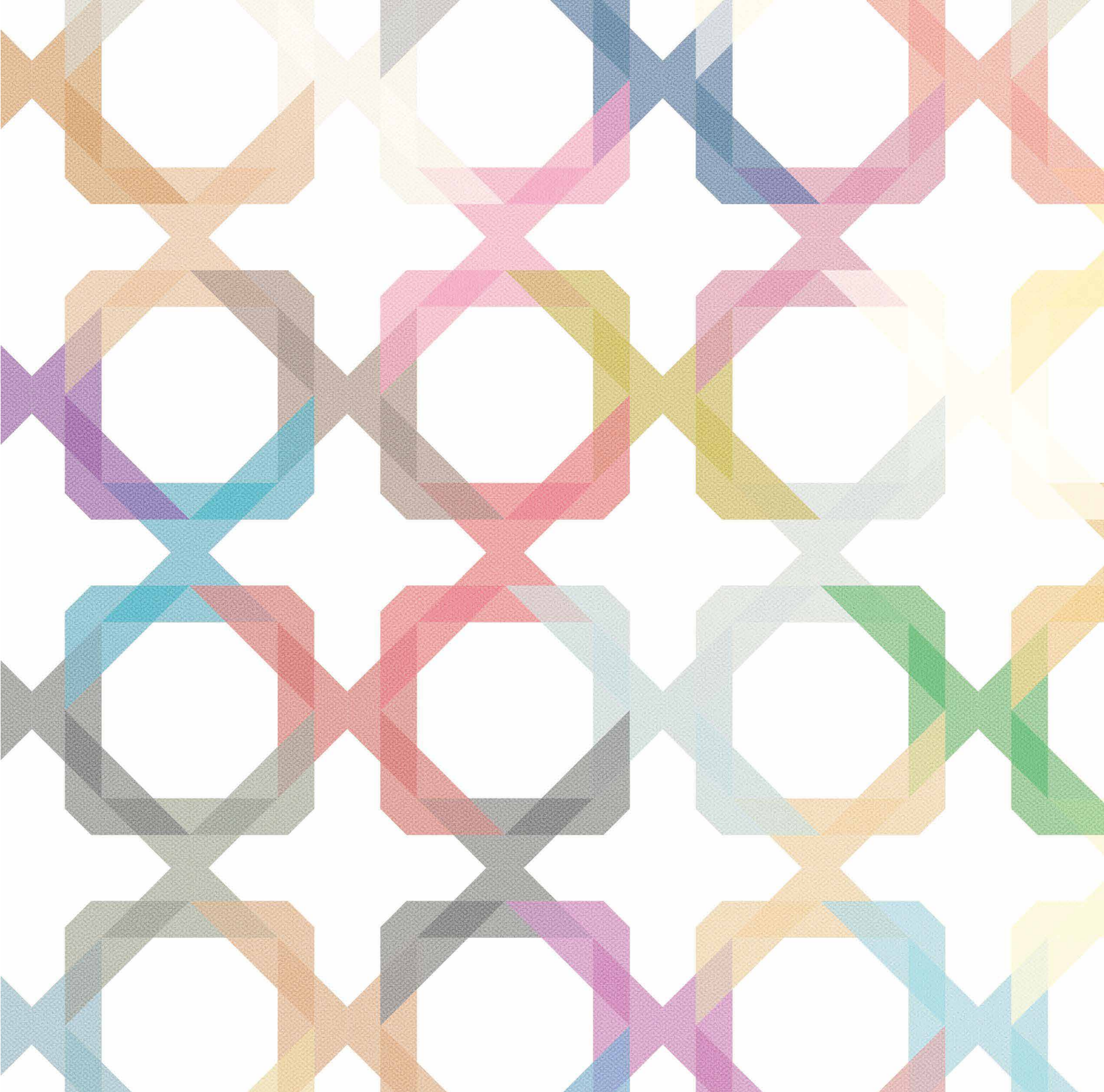


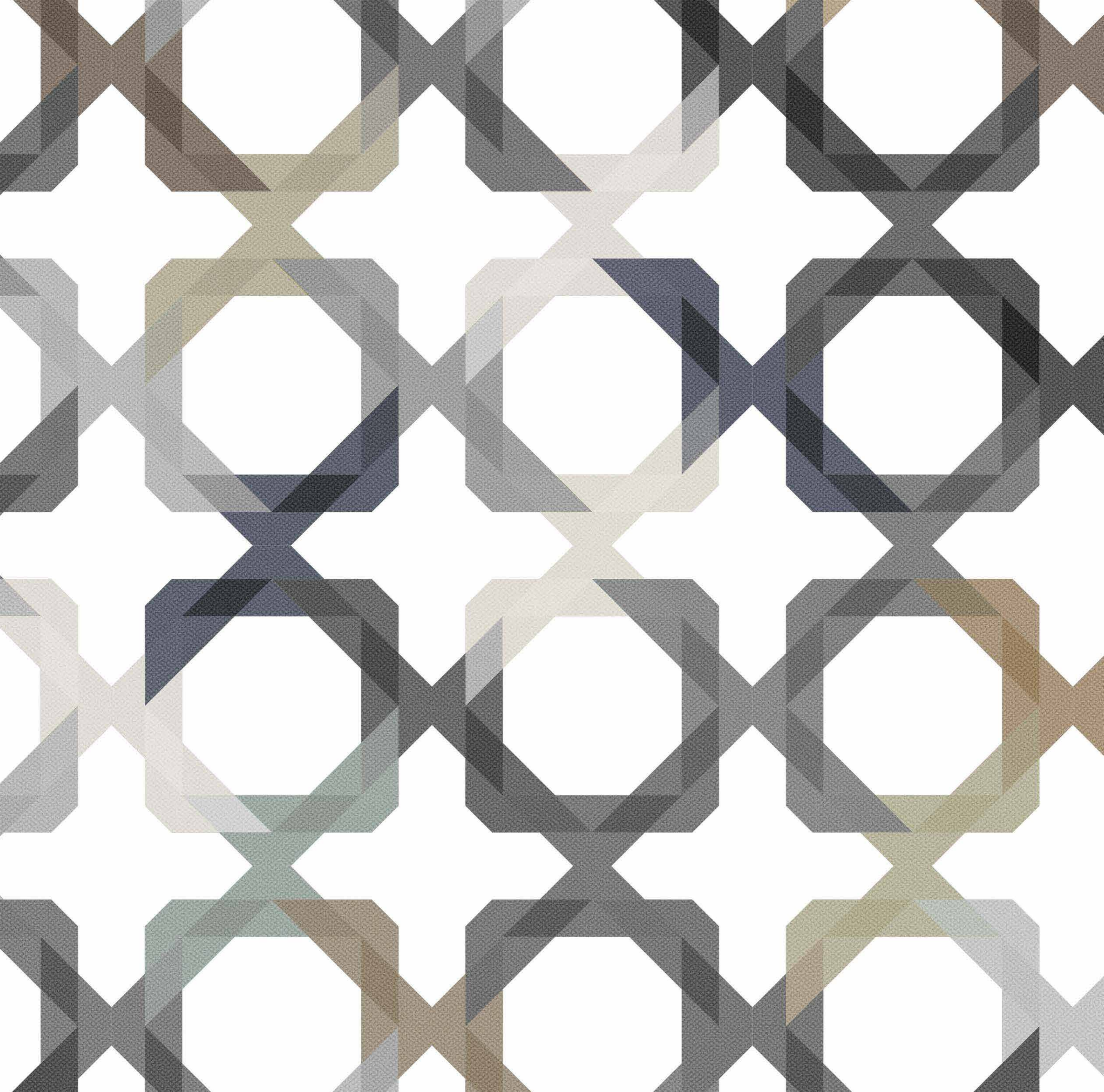
THE KID

Young counted in years on earth or young at heart, doesn't matter. What unites you is the certain carefree and playful approach to life. This is your playground; a safe creative nest. Sometimes messy, sometimes tidy. As life in general.



PATCHWORK PLAY | R14041 **R**







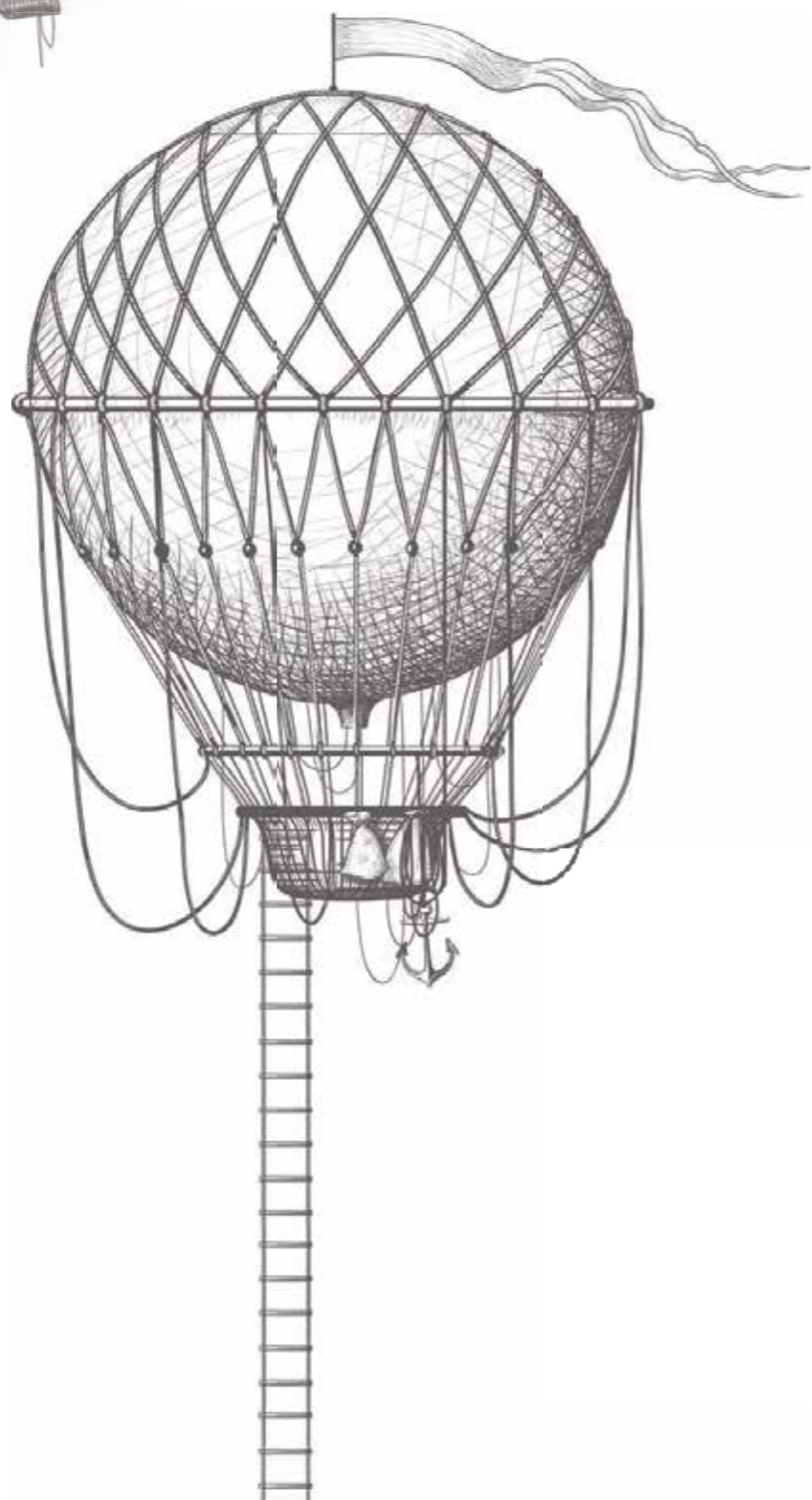
PATCHWORK PLAY, GREY | R14042 **R**



BALLOONS FLYING HIGH | R14051



B for balloons! It's hard not to be fascinated by hot air balloons; their simple but genius construction, the optimistic shape and the vibrant lovely colours! This wall mural is based on several photos of hot air balloons, placed in see-through layers on top of each other.



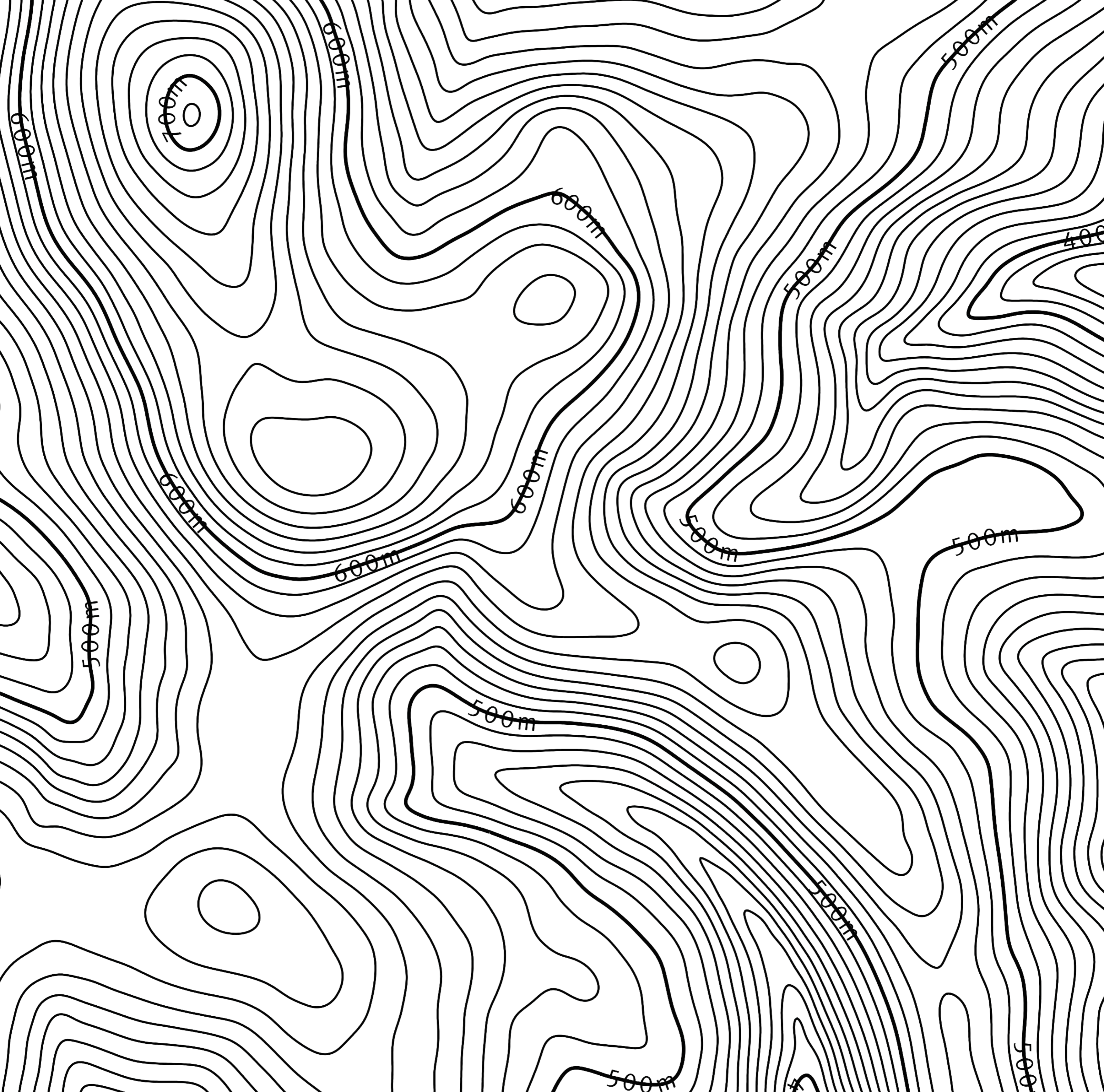
THE ADVENTURER

You are a humble explorer. People see you as well-travelled, but the more places and cultures you visit the more you realise you ain't seen nothing yet. It's a god thing then that the world is a big and beautiful place! This is your starting point for new adventures to come.



ELEVATION LINES | R14073



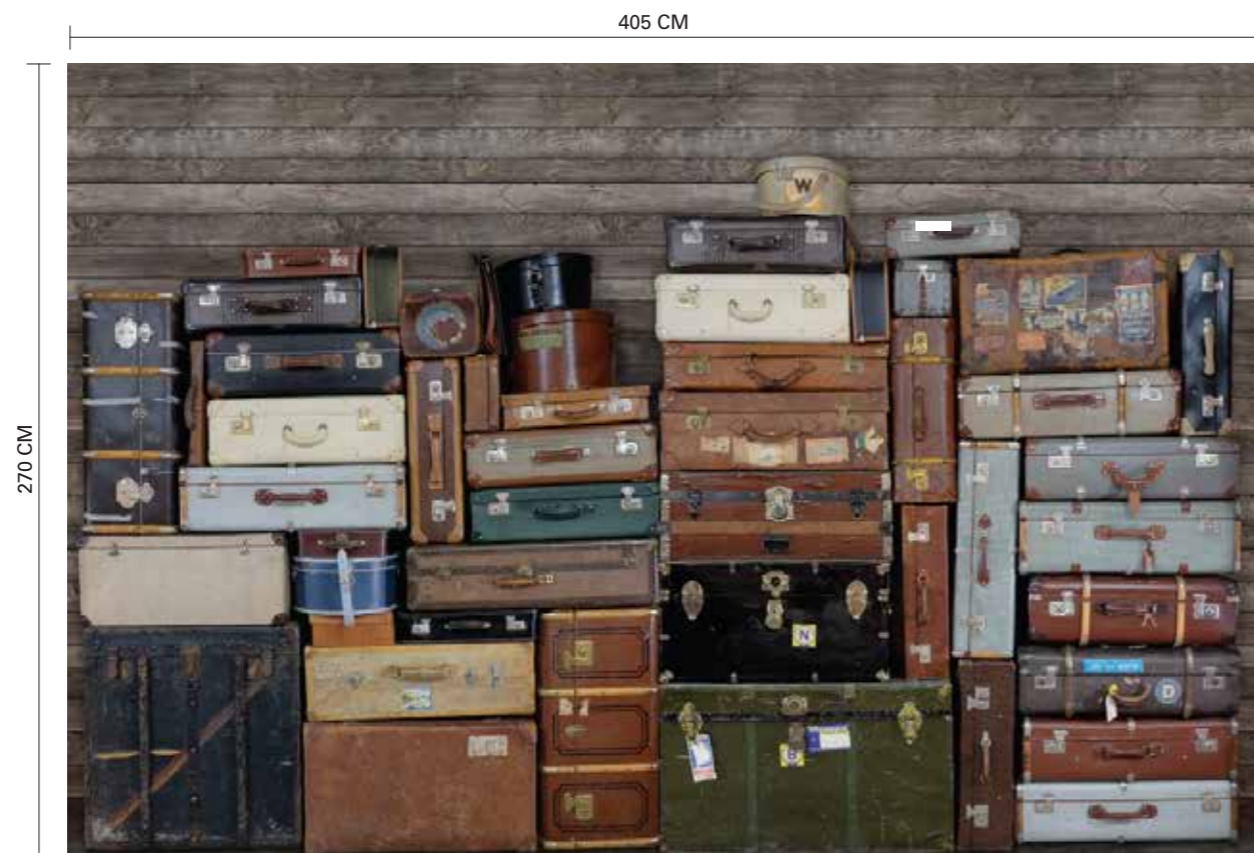




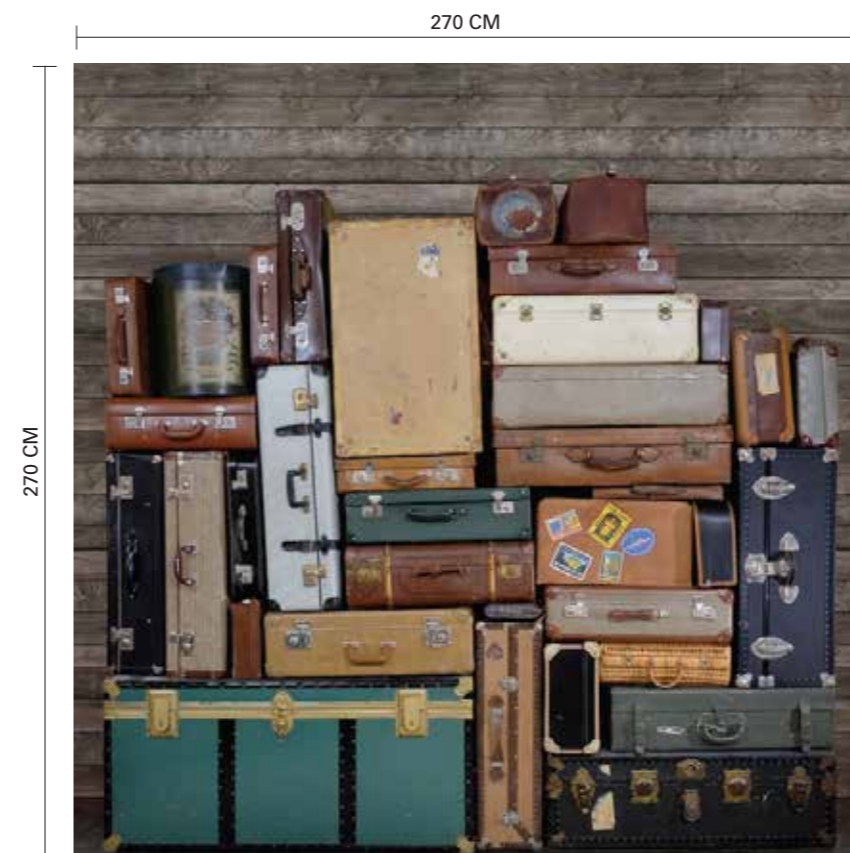
ELEVATION LINES, WHITE | R14071



STACKED SUITCASES | R14061 **R**



R14061 | STACKED SUITCASES
405X270 CM 




R14062 | STACKED SUITCASES, HEAP
270X270 CM 



R14063 | STACKED SUITCASES, PILE
180X270 CM 



R14064 | STACKED SUITCASES, BOARDS
180X270 CM 



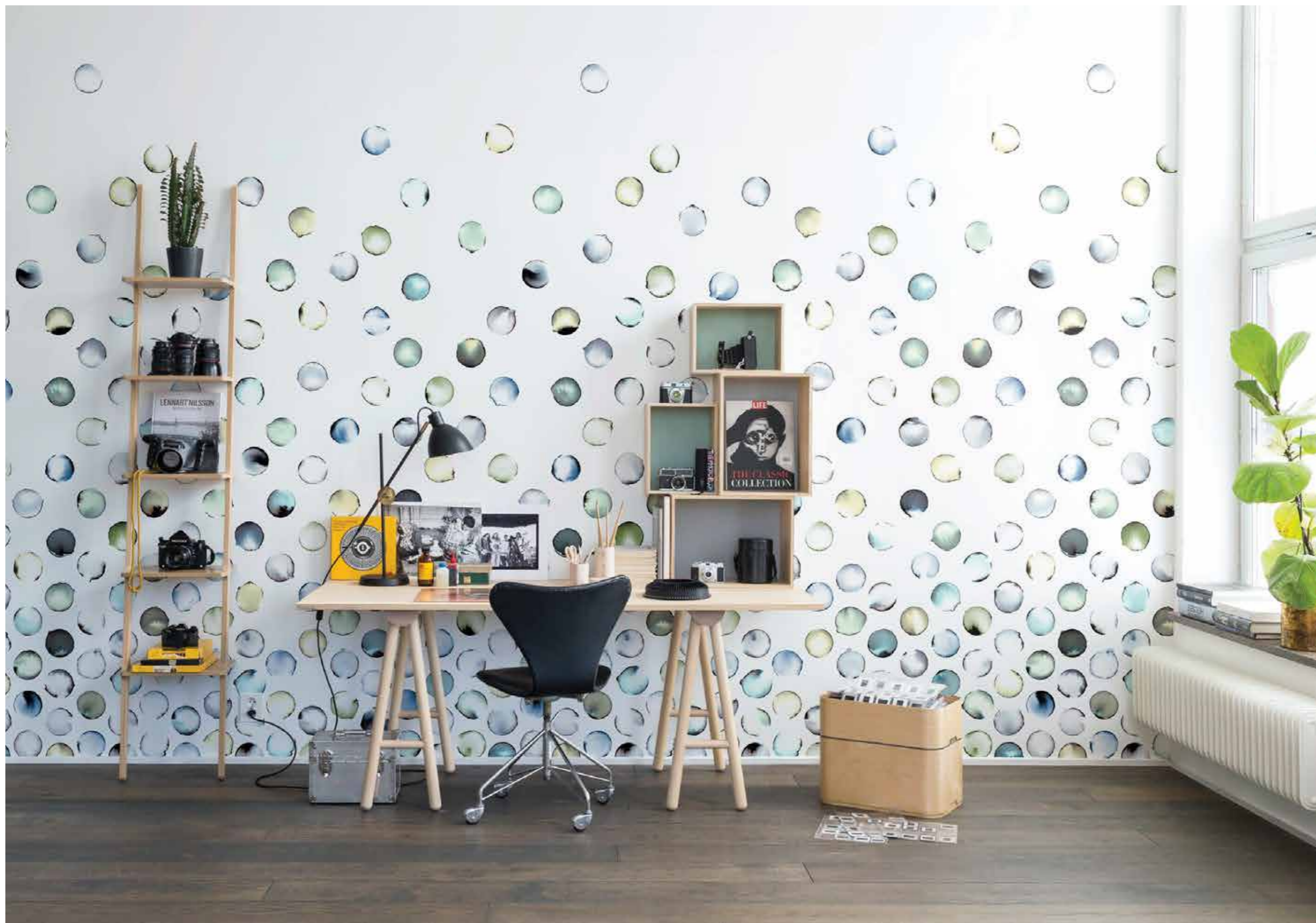
Mix the four sections to get exactly the right expression on your suitcase wall mural! If you want to have a "gap" between all the beautiful boxes, use the horizontal boards.

Our design team spent quite some time arranging and rearranging the magnificent collection of suitcases that we got access to during one intense and fun day.

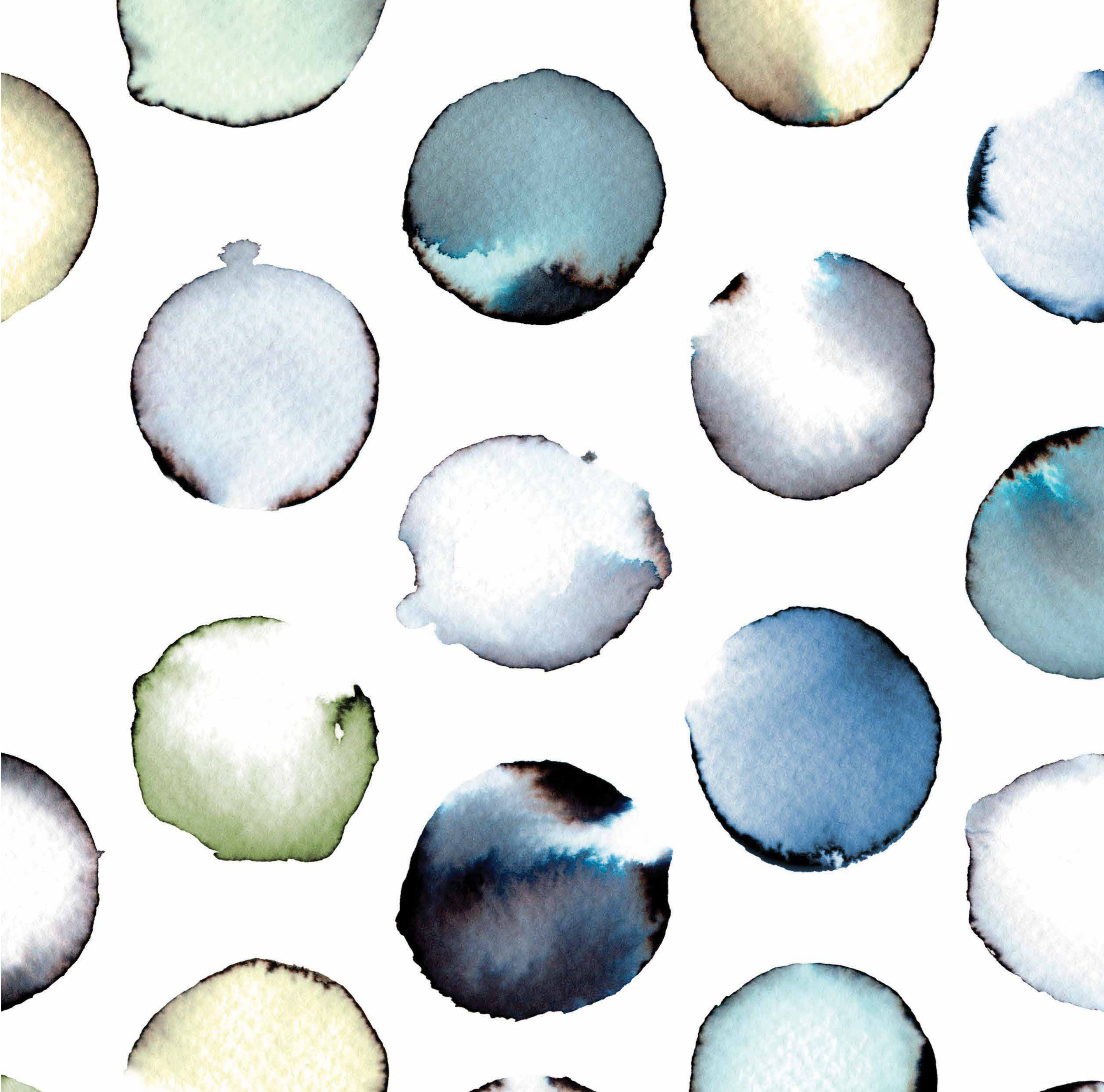


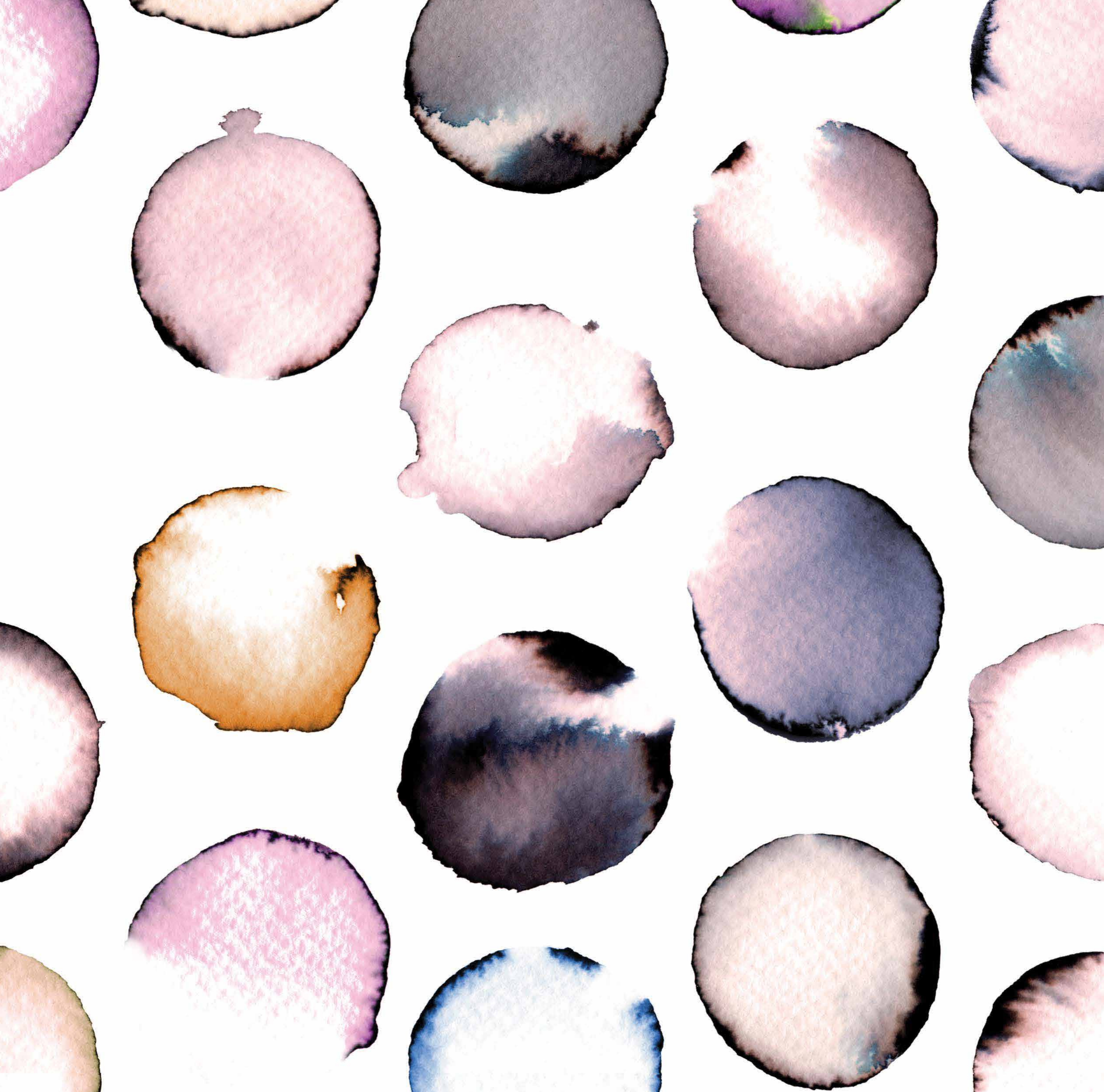
THE PHOTOGRAPHER

When others see chaos, you see beauty; when others see "nothing," you see "something" – and you can't help but capture it all on film. If this sounds anything like you, then please take a seat and plan your next photo shoot, go through your camera equipment or just flick through the latest photo book you bought.



LENSES | R13951 







LENSES, PEACH | R13952 



GLASS VAULT | R14081



GLASS VAULT, MULTIPLE | R14082 **R**

THE PHILOSOPHER

You see the beauty in the little things and the extraordinary values hidden in the "ordinary." Whatever your output is on all this input, wouldn't it be nice with a peaceful room, tailored to your taste and devoted for just this type of intense but immaterial action? We like to think so.



PULSE OF PASSION | R14091 







PULSE OF PASSION, WHITE | R14092 



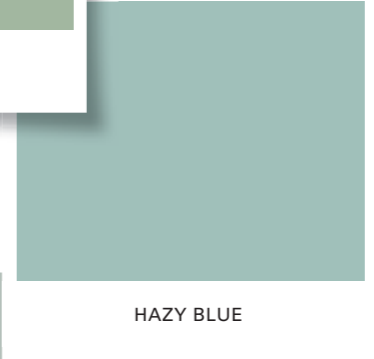
UP | R14101



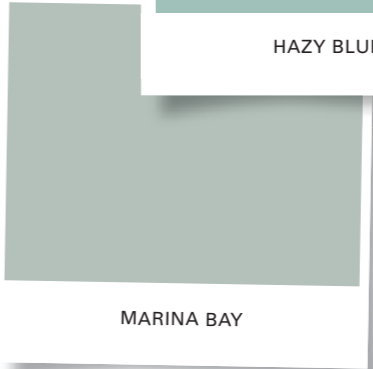
Raise your gaze and see how the beautiful arches stretch over you. The soft white in this wall mural really allows you to freely choose what other colour you should decorate your room in.



MERMAID GREEN



HAZY BLUE



MARINA BAY

THE CREATOR

You understand materials and you understand constructions. Perhaps you have chosen an art form and a particular material, or you are one of those multi-talents that have the ability to make new creative magic with whatever comes into your hands. Welcome to your own creative corner of the world!



SASSY ZIGZAG | R13941 







This is a wall mural with attitude and charisma. A unique and hand-painted pattern in watercolour; graphical and precise in shimmering pastel rhombs.

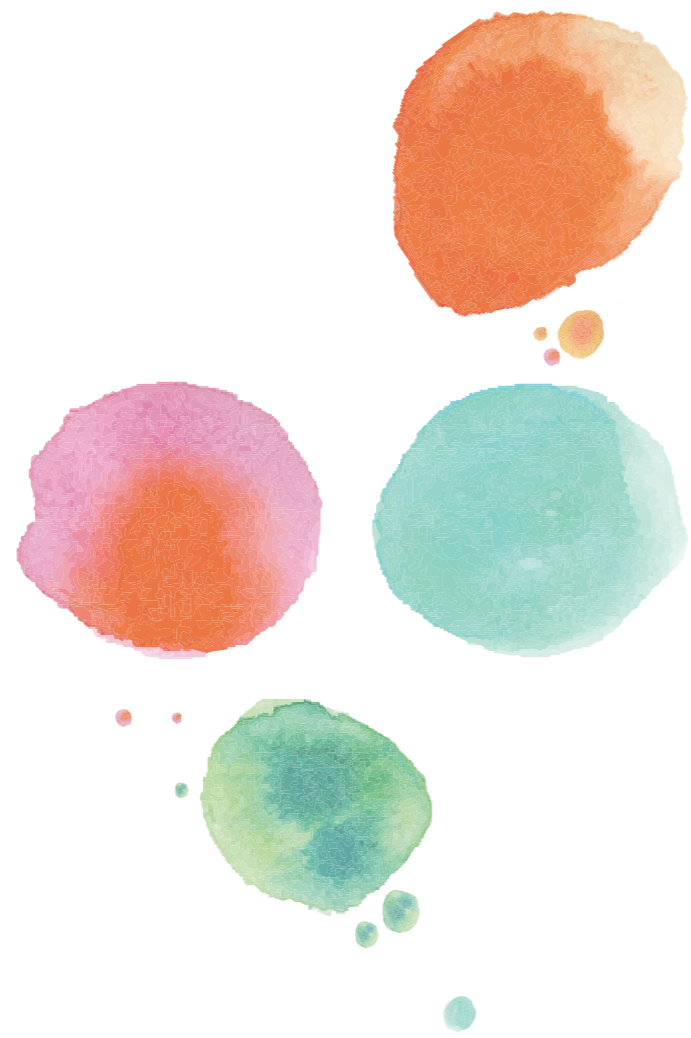




RAINBOW PALETTE | R13961 **R**

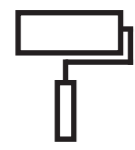






Everyone who has painted in watercolours at one point or another know what an equally delightful and difficult-to-master material it is – this wall mural is a tribute to the craft.



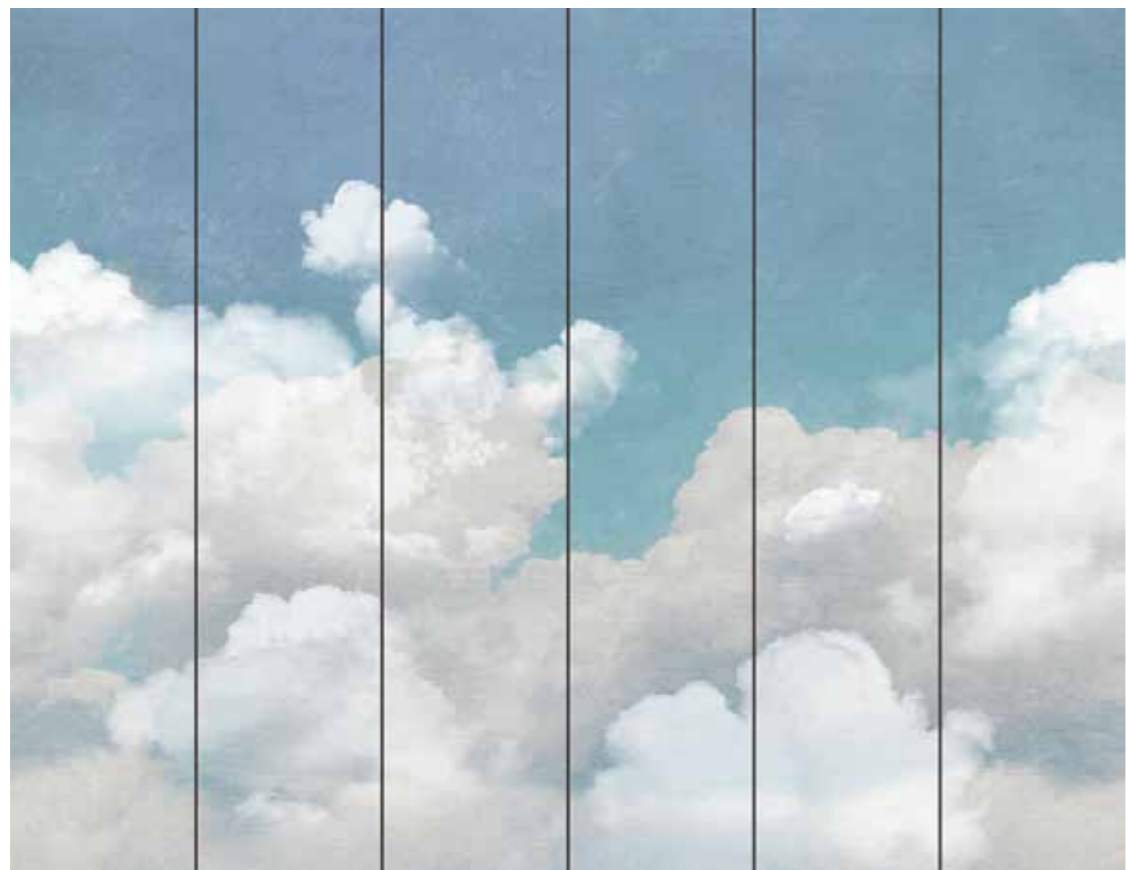
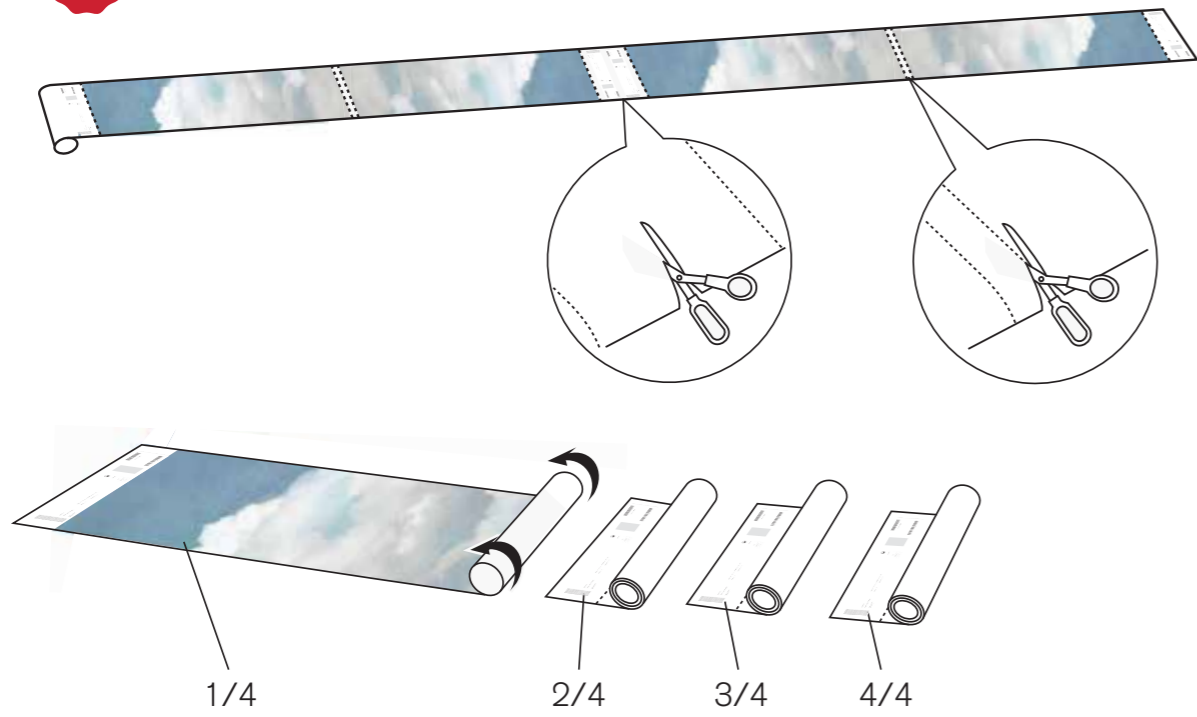


HANGING INSTRUCTIONS

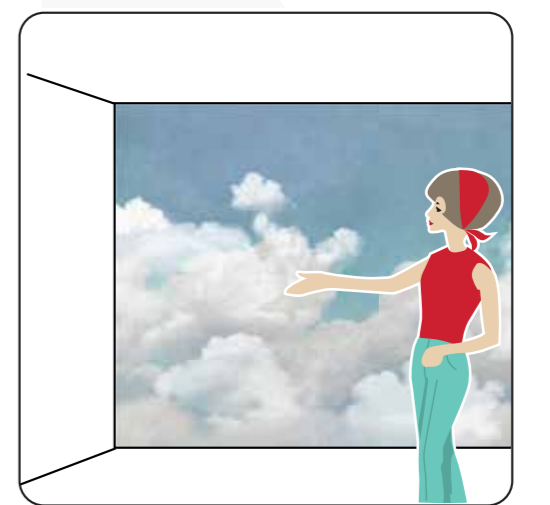
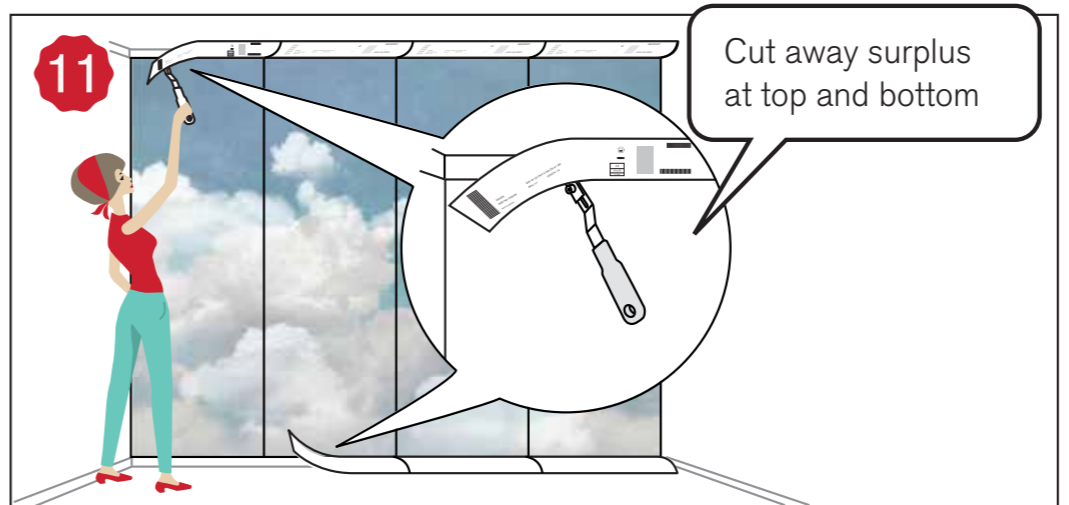
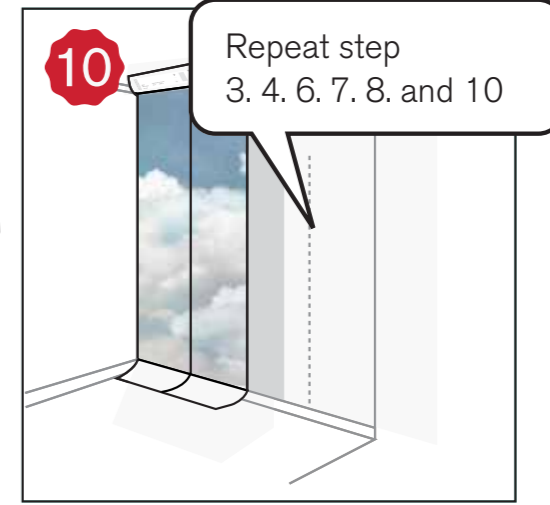
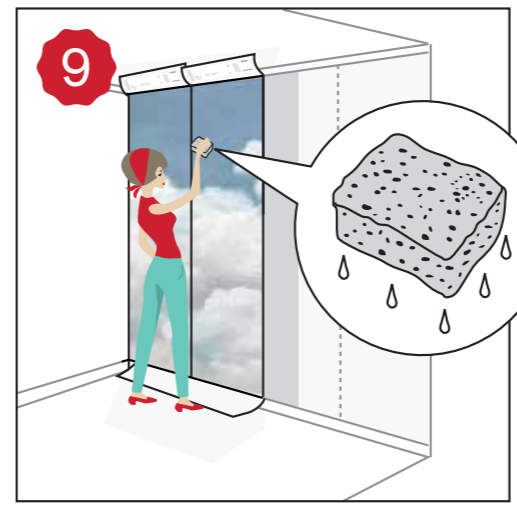
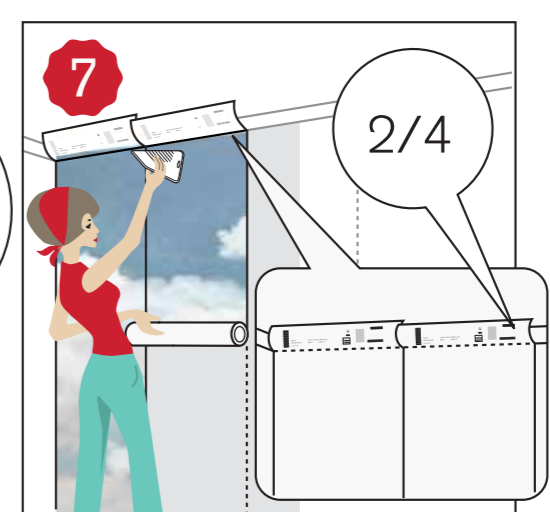
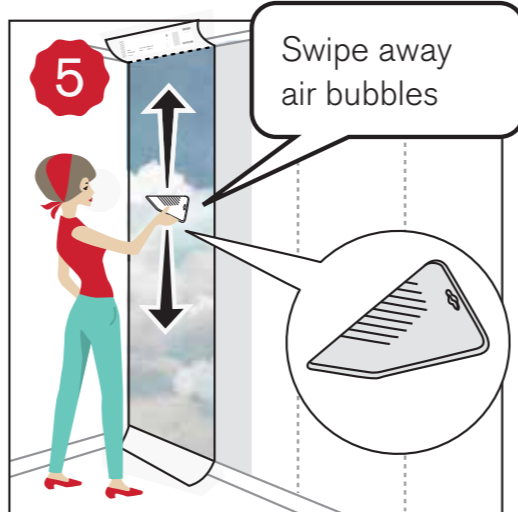
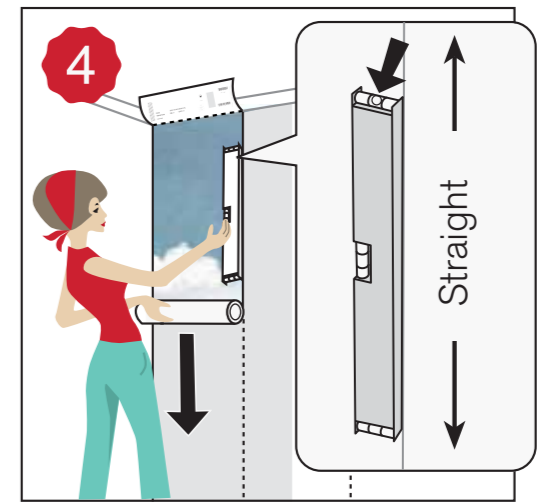
Follow these hanging instructions and your wall-paper will be up in no time!

→|← = STRAIGHT MATCH

1



45 CM





BEFORE YOU BEGIN

The surface of the wall must be smooth, clean, dry and sound. Flaking paint and loose wallpaper should be removed and any uneven surfaces must be filled. Give the wall a prime coating if the colour of the wall is very different to the new wallpaper. Very absorbent surfaces, such as plaster walls, should be sized.

RECOMMENDED TOOLS

- Rollers and tray
- Bucket
- Paintbrush (For the areas that the roller misses, e.g. along the ceiling and skirting boards)
- Spirit level or plumb line (To make sure the wallpaper is straight)
- Steel ruler (To make a straight, clean cut along the top and bottom)
- Wallpaper sponge (Soft cloth or sponge, preferably a cellulose sponge)
- Pencil
- Craft knife
- Wallpapering tool or brush

RIGHT ADHESIVE

Always use an adhesive specially recommended for non-woven wallpaper.

HANGING WALLPAPER 1 → 11

Start by dividing the lengths as indicated by the cutting symbols. Lay the lengths, with the label facing upwards, in numerical order starting with length number 1. Make sure you have all the lengths and that none of them are defective or damaged.

2-10. The lengths are numbered in the order in which they must be hung. The lengths should be hung edge to edge without any overlapping. It is essential that the first length is vertically straight. Tip: Make a pencil mark one wallpaper width along the wall near the ceiling. Hold a plumb line on the mark and draw a vertical line down the wall. Then line up your first length of wallpaper with this pencil line.

Roll the paste straight onto the wall. Be sure to evenly cover the entire surface. If you miss a spot, this will cause the wallpaper to bubble. Paste an area the width of one and a half lengths at a time. Gently and evenly press the lengths together to ensure there are no visible seams. Make sure the wall has been pasted where the lengths meet so that the edges are not visible. Try not to get paste on the front of the wallpaper. Any excess paste should be removed immediately using a wet wallpaper sponge.

Smooth each length with a clean wallpapering tool or wallpaper brush. Work from the ceiling to the floor and from the middle out to the edges.

Once all the wallpaper has been hung, cut off any excess along the ceiling and floor. Always use a sharp blade to avoid tearing the paper. Keep the room ventilated and at normal room temperature for 24 hours to allow the paste to dry.



FÖRE TAPETSERING

Väggen ska vara slät, ren, torr och väl förankrad. Gammal färg och tapet som inte sitter fast måste tas bort och spacklas vid behov. Grundmåla om väggen har starka färgskiftningar. Förlimma om underlaget är starkt sugande som exempelvis en gipsvägg.

REKOMMENDERADE VERKTYG

- Roller & Tråg
- Hink
- Pensel (Där rollern inte kommer åt t.ex. vid tak och lister)
- Vattenpass eller Lod (För att kontrollera att tapetväden hänger rakt)
- Ställinjal (För ev. stöd vid renskärning vid golv och tak)
- Tapetsvamp (Mjuk trasa eller svamp, helst cellulosasvamp)
- Blyertspenna
- Tapetkniv
- Tapetverktyg eller borste.

RÄTT LIM

Använd alltid lim specifikt för non-woven tapeter.

MONTERING AV TAPET 1 → 11

Börja med att dela isär väderna enligt skärmarkeringarna. Lägg väderna sedan med etiketten uppåt i nummerordning med våd nr.1 först. Kontrollera att alla väder är med och ingen våd är defekt eller skadad.

2-10. Alla väder är numrerade i den följd de ska monteras. Väderna ska monteras kant i kant vilket innebär att de inte ska överlappas. Det är viktigt att första väden monteras rakt. Tips är att göra ett lodat blyertsreck, en tapetvåd in på väggen och sedan montera första väden längst med blyertsrecket.

Rolla lim direkt på väggen. Se till att hela ytan täcks med lim och att det blir ett jämnt lager, en olimmad fläck blir en blåsa på tapeten. Limma 1,5 tapetvåd i taget. Se till skjuta ihop väderna utan några synliga skarvar med ett lätt och jämnt tryck. Se till att det finns lim där vädkanterna möts annars kan skarvarna bli synliga. Undvik att få lim på framsidan av tapeten och sköj eventuella limrester omgående med en rikligt blöt tapetsvamp.

Eftersläta varje våd med ett rent tapetverktyg eller tapetborste. Arbeta från tak mot golv och från mitten mot kanterna.

11. När hela tapeten är på plats skär bort överflödig tapet vid golv och tak. Ha alltid vassa blad för att inte trasa sönder tapeten. Vädra rummet i 1 dygn men håll normal rumstemperatur så limmet torkar.



FØR TAPETSERING

Veggen skal være jevn, ren, tørr og godt forankret. Gammel maling og tapet som ikke sitter fast, må fjernes og sparkles ved behov. Bruk grunning hvis veggen har sterke fargeforskjeller. Hvis underlaget er kraftig absorberende, som for eksempel en gipsvegg, bør du forlime.

ANBEFALT VERKTØY

- Malerull og malerullkar
- Bøtte
- Pensel (Brukes der malerullen ikke kommer til, f.eks. ved tak og lister)
- Vatterpass eller lodd (for å sjekke at tapetlengden henger rett)
- Stållinjal (for ev. støtte ved renskjerjing ved golv og tak)
- Tapetsvamp (myk klud eller svamp, helst cellulosesvamp)
- Blyant
- Tapetkniv
- Tapetsparkel eller -børste

RIKTIG LIM

Bruk alltid lim som er beregnet på non-woven-tapeter.

MONTERING AV TAPET 1 → 11

Begynn med å dele lengdene i henhold til skjæremarkeringene. Legg deretter lengdene med etiketten opp i nummerrekkefølge, med lengde 1 først. Kontroller at alle lengdene er med, og at ingen av lengdene er defekte eller skadet.

2-10. Alle lengdene er nummerert i den rekkefølgen de skal monteres. Lengdene skal monteres kant i kant og skal ikke overlappe hverandre. Det er viktig at den første lengden monteres rett. Et tips er å tegne en loddrett blyantstrek én tapetlengde inn på veggen og deretter montere den første lengden langs streken.

Påfør lim direkte på veggen. Sørg for at hele overflaten dekkes med lim, og at det blir et jevnt lag. Felter uten lim, danner en blære i tapetet. Påfør lim til 1,5 tapetlengde av gangen. Pass på å sette sammen lengdene uten synlige skjøter og med et lett, trykk trykk. Pass på at det er lim der tapetkantene møtes, hvis ikke kan skjøtene bli synlige. Unngå å få lim på forsiden av tapetet. Eventuelle limrester må tørkes av med en god fuktet tapetsvamp.

Glatt over hver lengde med en ren tapetsparkel eller -børste. Arbeid fra tak mot golv og fra midten mot kantene.

Når hele tapetet er på plass, skjærer du bort overflødig tapet ved golv og tak. Sørg for at tapetkniven har skarpe blader, slik at ikke tapetkanten blir fisete. Luft ut rommet i 1 døgn, men hold normal romtemperatur, slik at limet tørker.



FØR TAPETSERING

Væggen skal være glat, ren, tør og godt forankret. Gammel maling og tapet som ikke sidder fast, skal fjernes og spartles efter behov. Giv væggen grundmaling, hvis den har stærke farveforskelle. Forlim, hvis underlaget er stærkt sugende, som for eksempel en gipsvæg.

ANBEFALEDE VÆRKTØJER

- Malerulle og bakke
- Spand
- Pensel (Hvor malerullen ikke kan komme til, f.eks. ved loft og lister)
- Vatterpas eller lod (For at kontrollere, at tapetbanen hænger lige)
- Stållineal (Til eventuel støtte ved renskærning ved golv og loft)
- Tapetsvamp (Blød klud eller svamp, helst cellulosesvamp)
- Blyant
- Tapetkniv
- Tapetspartel eller tapetbørste

DEN RETTE LIM

Benyt altid lim, der er specifikt beregnet til non-woven tapeter.

OPSÆTNING AF TAPET 1 → 11

Begynd med at dele banerne i henhold til skæremarkeringerne. Læg derefter banerne med etiketten opad i nummerrekkefølge, med bane nr. 1 først. Kontroller, at du har alle baner, og at ingen af banerne er defekte eller beskadigede.

2-10. Alle baner er nummereret i den rækkefølge, de skal monteres. Banerne skal monteres kant mod kant, hvilket betyder, at de ikke skal overlappe. Det er vigtigt, at den første bane hænger lige. Et tip er at tegne en lodret blyantstreg en tapetbane inde på væggen og derefter sætte den første bane op langs med blyantstregen.

Rul limen direkte på væggen. Sørg for, at hele overfladen dækkes med lim, og at laget påføres jævnt. En plet uden lim giver en blære på tapetet. Rul lim på til 1,5 tapetbane ad gangen. Sørg for at skyde banerne sammen uden nogen synlige samlinger med et let og jævnt tryk. Sørg for, at der er lim, hvor banekanterne mødes, da samlingerne ellers kan blive synlige. Undgå at få lim på forsiden af tapetet, og tør straks eventuelle limrester af med en godt vædet tapetsvamp.

Glæt hver bane efter med en ren tapetspartel eller tapetbørste. Arbejd fra loftet mod gulvet og fra midten mod kanterne.

Når hele tapetet er kommet på plads, skæres overflødig tapet væk ved golv og loft. Sørg for, at tapetkniven altid har skarpe blader for at undgå flossede tapetkanter. Luft rummet ud i 1 døgn, men bevar normal rumtemperatur, så limen tørrer.



ENNEN TAPETOINTIA

Seinän tulee olla sileä, puhdas, kuiva ja luja. Poista irtoaali ja –tapetit ja silota seinä tarvittaessa. Pohjamaalaa seinä, jos siinä on suuria sävyeroja. Esiliimaa voimakkaasti imevää alusta kuten esimerkiksi kipsiseinä.

SUOSITELTAVAT TYÖKALUT

- Tela ja kaukalo
- Sanko
- Sivelin (paikkoihin, joihin telalla ei pääsee esim. katonrajat ja listanvierustat)
- Vesivaaka tai luotilanka (tapettivuodan pystysuoruuden tarkastamiseen)
- Teräsviivain (avuksi tapetin leikkaamiseen lattian ja katonrajassa)
- Sieni (Pehmeä riepu tai sieni, mieluiten selluloosasieni)
- Lyyjykynä
- Tapettiveitsi
- Tapettilasta tai harja

OIKEA LIIMA

Käytä aina non-woven-tapeteille tarkoitettua liimaa.

TAPETIN ASENNUS 1 → 11

Aloita leikkaamalla vuodat leikkausmerkintöjen mukaan. Aseta vuodat sitten etiketti ylöspäin numerojärjestykseen, 1. vuota päälimmäiseksi. Tarkasta, että kaikki vuodat ovat mukana ja että kaikki ovat ehjiä.

2-10. Vuodat on numeroitu asennusjärjestyksessä. Vuodat asennetaan puskusamuoin, ts. ne eivät saa olla limittini. On tärkeää, että ensimmäinen vuota asennetaan pystysuoraan. Vedä ensin pystysuora lyyjykynäviiva seinälle yhden vuodan päähän nurkasta ja asenna sitten ensimmäinen vuota lyyjykynäviivan viereen.

Levitä liima suoraan seinälle. Varmista, että liima peittää koko pinnan tasaisena kerroksena, liimaton kohta jättää kuplan tapettiin. Liimaa 1,5 vuotaa kerrallaan. Työnnä vuotia yhteen keyvesti ja tassisesti painaen niin, että niiden väliin ei jää näkyviä saumoja. Varmista, että vuotien reunoiissa on liimaa, muuten saumat saattavat jäädä näkyviin. Älä päästä liimaa tapetin etupinnalle ja pyyhi liimanjäänteet välittömästi määrällä tapettisienellä.

Kiinnitä jokainen vuota puhtaalla tapettilastalla tai -harjalla. Työskentele ylhäältä alas päin ja etene keskeltä reunoja kohti.

Kun koko tapetti on paikallaan, leikkaa ylimääräinen tapetti lattian ja katon rajasta. Käytä terävää tapettiveitsiä, jotta tapetti ei repeydy. Tuuleta huonetta vuorokauden ajan, mutta pidä se normaalissa huonelämpötilassa, jotta liima kuivuu.



AVANT LA POSE DU PAPIER PEINT

La surface du mur doit être lisse, propre, sèche et bien fixée. Enlevez les restes de peinture et de papier peint. Appliquez un enduit de rebouchage si nécessaire. Si la surface présente de grandes différences de couleurs, appliquez une couche de peinture de fond. Dans le cas d'une surface très absorbante (mur de plâtre, par exemple), passez une première couche de colle.

OUTILS CONSEILLÉS

- Un rouleau et un bac
- Un seau
- Un pinceau (pour les endroits inaccessibles au rouleau, près du plafond et des moulures)
- Un niveau à bulle ou un fil à plomb (pour contrôler la verticalité des lés)
- Une règle en acier (pour des coupes bien droites au plafond et au sol)
- Une éponge pour papier peint (un chiffon doux ou une éponge, de préférence cellulosique)
- Un crayon à papier
- Un couteau à araser
- Une spatule à enduire ou une brosse à encoller.

LE CHOIX DE LA COLLE

Utilisez toujours une colle prévue spécialement pour les papiers peints non tissés.

POSE DU PAPIER PEINT 1 → 11

Commencez par découper les lés suivant les traits de coupe. Déposez ensuite les lés, étiquette face à vous, par ordre de numéro, en commençant par 1. Vérifiez qu'il ne manque aucun lé et qu'aucun ne présente des défauts ou est abîmé.

2-10. Les lés sont numérotés dans l'ordre de pose. Les lés doivent être posés bord à bord, c'est-à-dire qu'ils ne doivent pas se chevaucher. Il est important que le premier lé soit parfaitement vertical. Astuce : faites un trait au crayon à papier à une largeur de lé puis posez le premier lé en suivant le trait. Appliquez la colle au rouleau directement sur le mur. Encollez toute la surface d'une couche uniforme. Un « oubli » se traduit par une cloque sous le papier peint.

Encollez un lé et demi à la fois. Joignez les lés sans raccord visible en appliquant une pression légère et uniforme. Assurez-vous qu'il y a de la colle là où les lés se rencontrent; autrement, les raccords peuvent devenir visibles. Évitez de mettre de la colle sur la face avant du papier peint. Enlevez immédiatement les restes de colle à l'aide d'une éponge bien imbibée d'eau. Repassez sur chaque lé avec une spatule ou une brosse, en allant de haut en bas, et du milieu vers les bords.

11. Une fois le papier peint posé, enlevez les excédents au plafond et au sol. Ayez toujours des lames bien tranchantes pour ne pas déchirer le papier. Aérez la pièce pendant 24 heures mais en veillant à maintenir une température normale afin que la colle sèche.



VOR DEM TAPETIEREN

Die Wand muss glatt, sauber, trocken und gut befestigt sein. Alte, nicht fest haftende Farbreste und Tapeten sind zu entfernen und bei Bedarf zu verspachteln. Die Wand ist neu zu grundieren, wenn sie starke Farbunterschiede aufweist. Wenn die Unterlage wie z. B. eine Gipswand sehr aufnahmefähig ist, muss sie eingekleistert werden.

EMPFÖHLENES WERKZEUG

- Roller und Schale
- Eimer
- (für mit dem Roller nicht zu erreichende Stellen, z. B. Leisten)
- Wasserwaage oder Lot (zur Kontrolle, ob die Tapetenbahn gerade hängt)
- Stahllineal (eventuell als Abstützung beim Feinschnitt an Decke und Fußboden)
- Tapetenschwamm (weicher Lappen oder Schwamm, möglichst ein Zelluloseschwamm)
- Bleistift
- Tapeziermesser
- Tapezierwerkzeug oder Bürste

DER RICHTIGE KLEISTER

Es ist immer Kleister zu verwenden, der speziell für Vliestapeten vorgesehen ist.

ANBRINGUNG DER TAPETE 1 → 11

Zunächst die Bahnen den Schnittmarkierungen entsprechend zerlegen. Danach sind sie beginnend mit Bahn Nr. 1 in Nummernreihenfolge mit dem Etikett nach oben abzulegen. Überprüfen, ob alle Bahnen vorhanden sind und keine defekt oder beschädigt ist.

2-10. Alle Bahnen sind der Reihenfolge entsprechend nummeriert, in der sie anzubringen sind. Sie sind auf Stoß anzubringen, dürfen sich also nicht überlappen. Es ist wichtig, dass die erste Bahn gerade angebracht wird. Es empfiehlt sich, einen ausgeloteten senkrechten Strich mit dem Bleistift zu machen und eine Bahn an der Wand an diesem Strich entlang anzubringen.

Den Kleister direkt auf die Wand auftragen. Sicherstellen, dass die gesamte Fläche mit Kleister bedeckt ist und dieser eine gleichmäßige Schicht bildet. Ein kleisterfreier Fleck wird unter der Tapete zu einer Blase. Jeweils eine Breite von anderthalb Bahnen einkleistern. Darauf achten, dass die Bahnen ohne sichtbare Spalten mit leichtem und gleichmäßigem Druck zusammengeschoben werden. Sicherstellen, dass an den Stößen der Bahnen Kleister vorhanden ist, andernfalls kann es zur Spaltenbildung kommen. Möglichst keinen Kleister auf die Vorderseite der Tapete gelangen lassen und eventuell vorhandene Kleisterreste sofort mit einem richtig nassen Tapetenschwamm abwischen.

Jede Bahn abschließend mit einem sauberen Tapezierwerkzeug oder einer Tapezierbürste andrücken. Von oben nach unten und von der Mitte zu den Kanten arbeiten.

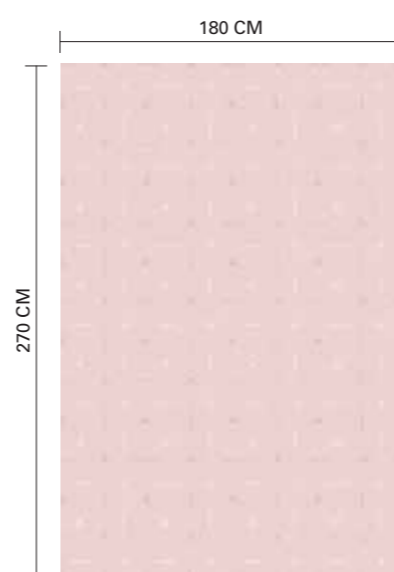
11. Sobald die ganze Tapete angebracht worden ist, sind überschüssige Reste an Decke und Fußboden abzuschneiden. Die Klängen müssen immer scharf sein, damit die Tapete nicht zerstört wird. Den Raum 24 Stunden bei normaler Zimmertemperatur lüften, damit der Kleister trocknet.



ORDER OPTION: STANDARD SIZES

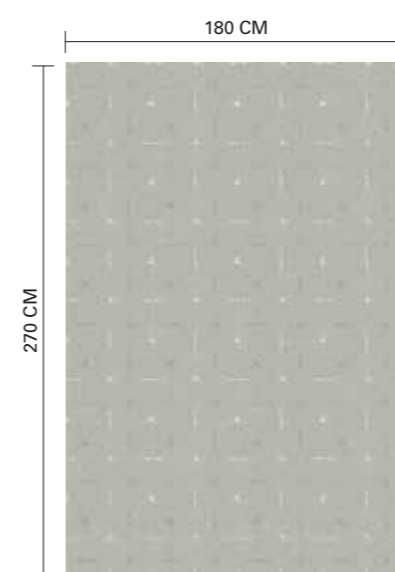
- 1.) Select your favorite wallpaper from the collection book.
- 2.) Measure the height and the width of your wall.
- 3.) Use this wallpaper overview to see how many standard sizes wall murals you need to order.

R = REPEATABLE



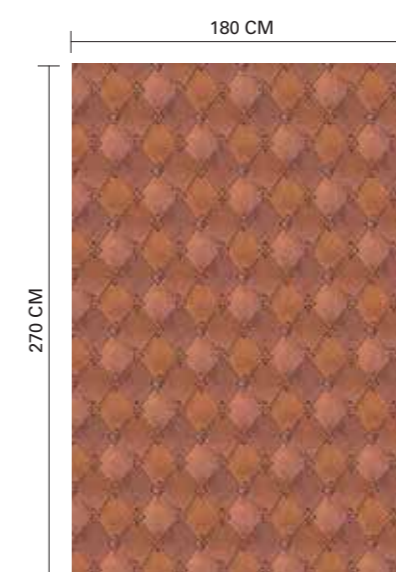
PERFECT FIT, POWDER PINK
R14113-4 | 180x270 CM

R



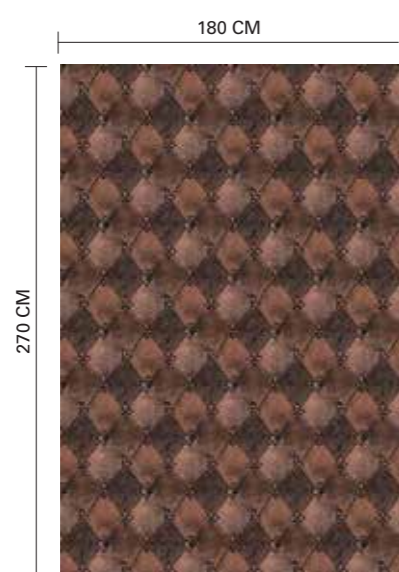
PERFECT FIT, MINT GREEN
R14112-4 | 180x270 CM

R



LEATHER RHOMBS
R14121-4 | 180x270 CM

R



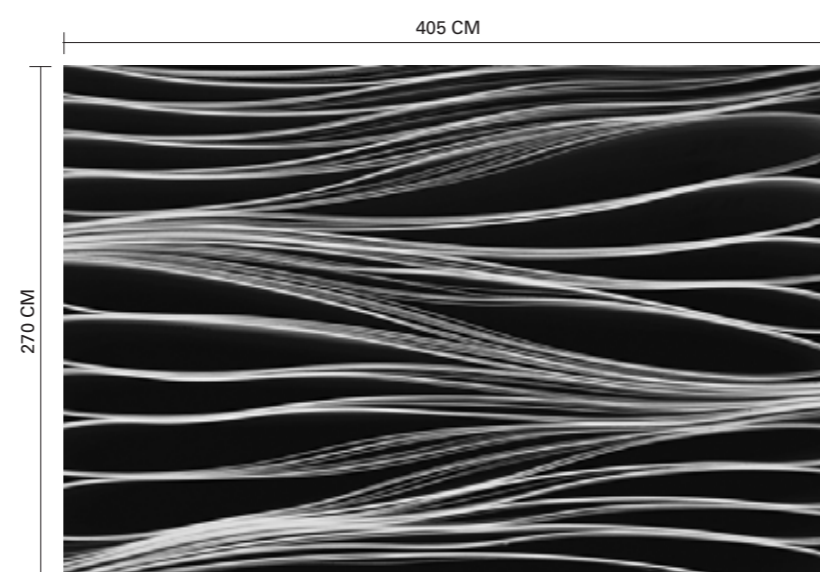
LEATHER RHOMBS, VINTAGE
R14122-4 | 180x270 CM

R

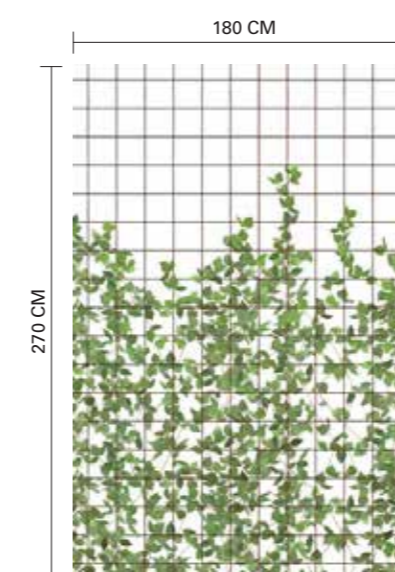


TYPOMANIA
R13971-4 | 180x270 CM

R

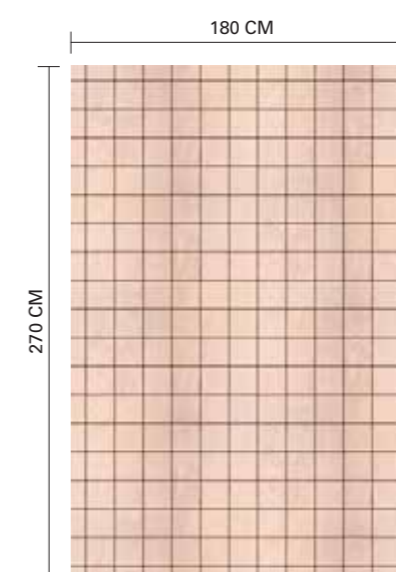


BLANK PAGES
R13981-9 | 405x270 CM



CLIMBING CLOROFYL
R13993-4 | 180x270 CM

R

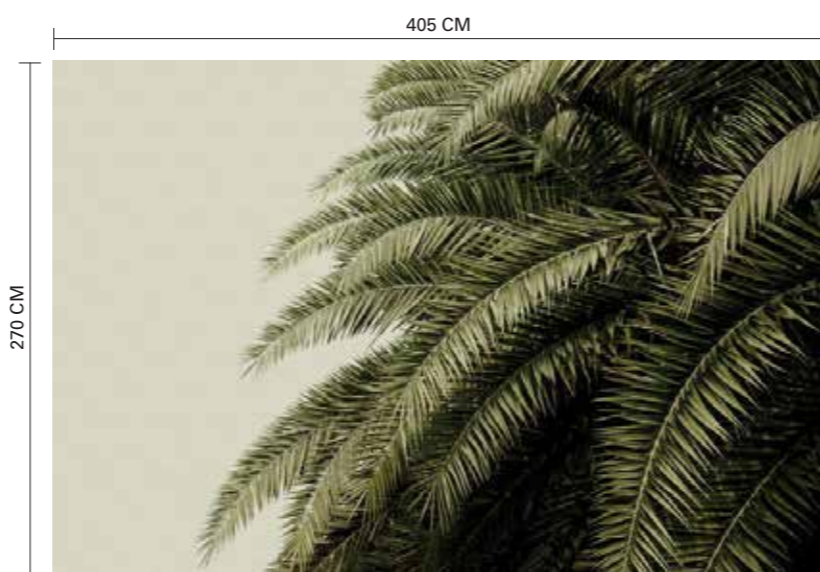


CLIMBING CLOROFYL, WOOD
R13992-4 | 180x270 CM

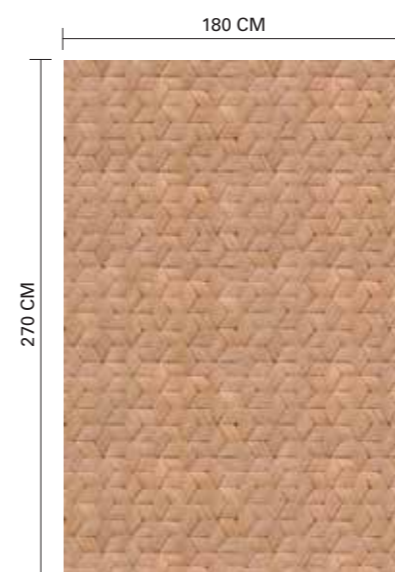
R



LEAF LOVE
R14001-9 | 405x270 CM



LEAF LOVE, MIRRORED
R14002-9 | 405x270 CM



BIRCH BARK BRAIDS
13931-4 | 180x270 CM

R



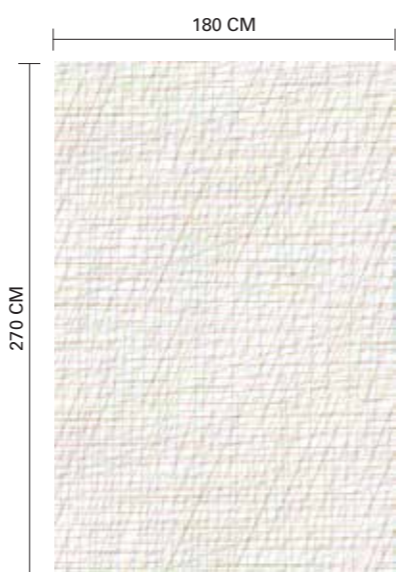
BIRCH BARK BRAIDS, WHITE
R13932-4 | 180x270 CM

R



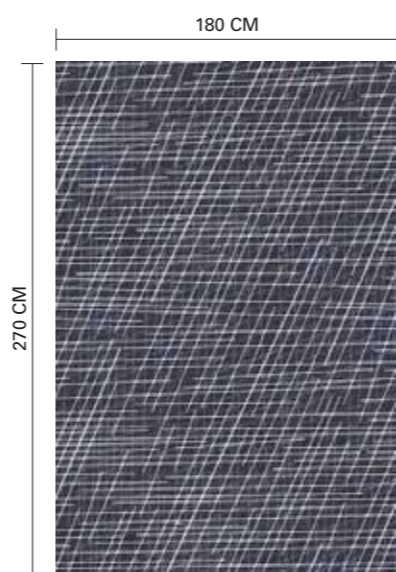
CUDDLE CLOUDS
R14011-8 | 360x270 CM

R



NOTE SHEETS
R14021-4 | 180x270 CM

R

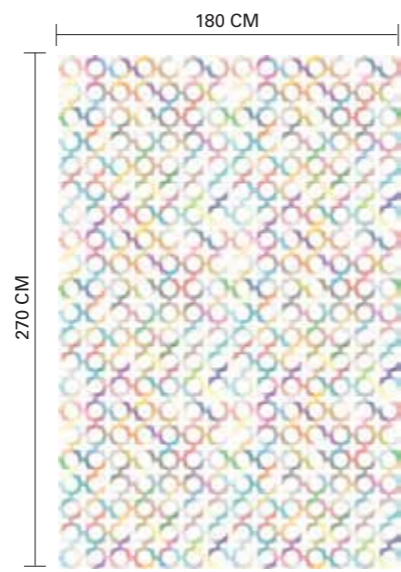


NOTE SHEETS, DENIM
R14024-4 | 180x270 CM

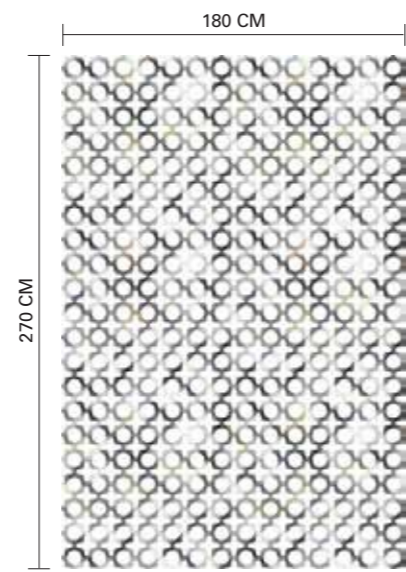
R



IN THE SPOTLIGHT
R14031-9 | 405x270 CM



PATCHWORK PLAY
R14041-4 | 180x270 CM
R



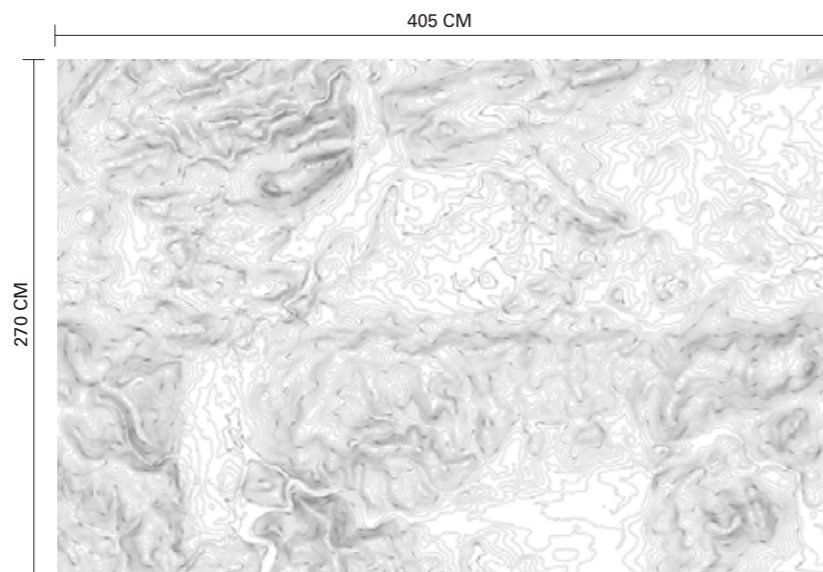
PATCHWORK PLAY, GREY
14042-4 | 180x270 CM
R



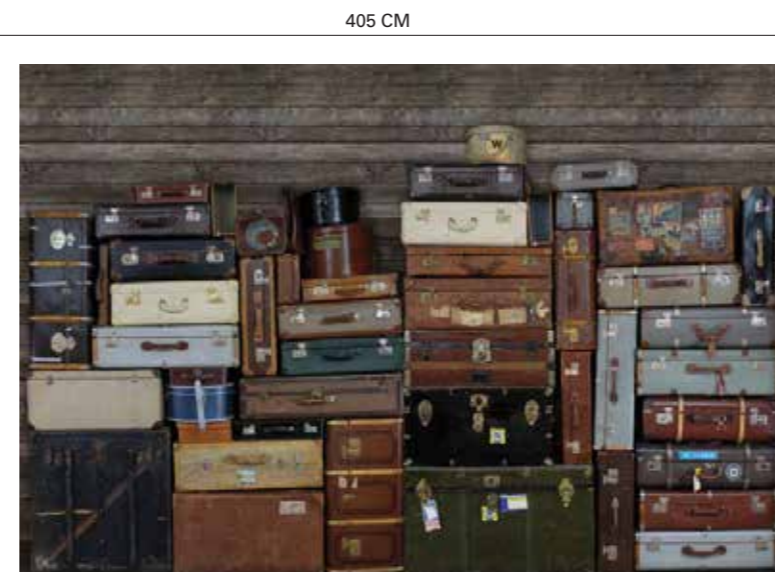
BALLOONS FLYING HIGH
R14051-9 | 405x270 CM



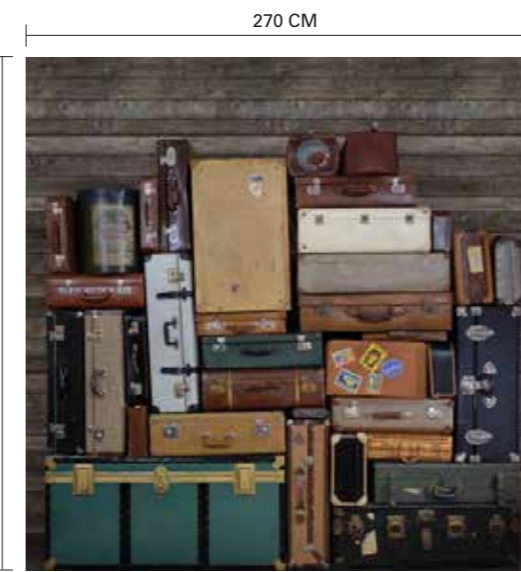
ELEVATION LINES
R14073-9 | 405x270 CM



ELEVATION LINES, WHITE
R14071-9 | 405x270 CM



STACKED SUITCASES
R14061-9 | 405x270 CM
R



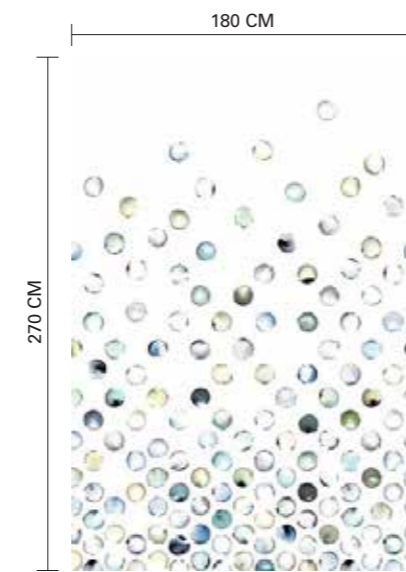
STACKED SUITCASES, HEAP
R14062-6 | 270x270 CM
R



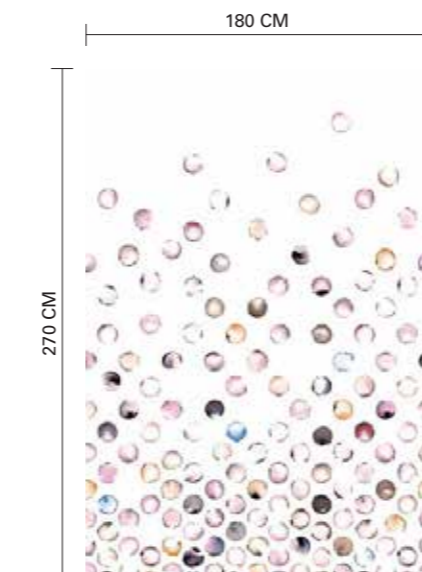
STACKED SUITCASES, PILE
R14063-4 | 180x270 CM
R



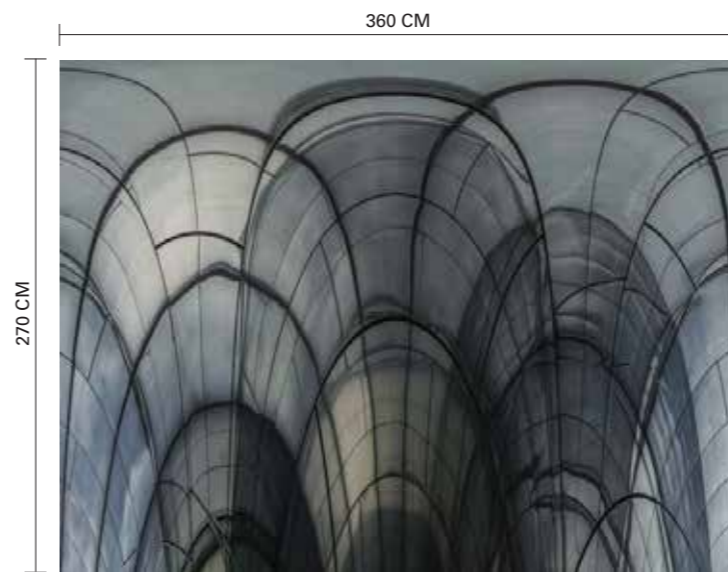
STACKED SUITCASES, BOARDS
R14064-4 | 180x270 CM
R



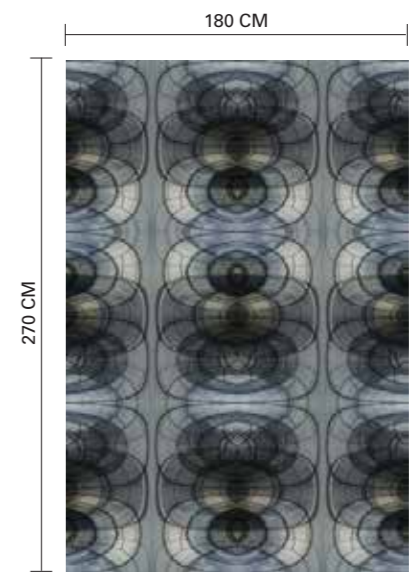
LENSES
R13951-4 | 180x270 CM
R



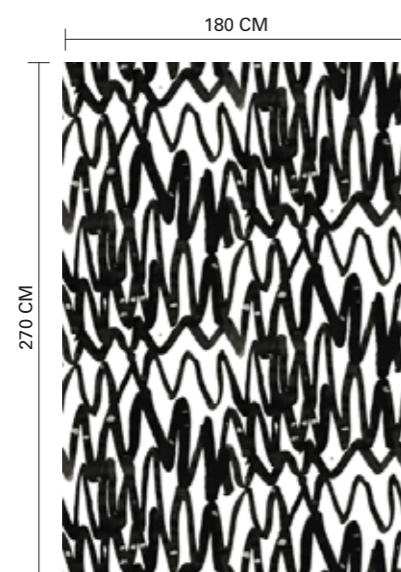
LENSES, PEACH
R13952-4 | 180x270 CM
R



GLASS VAULT
R14081-8 | 360x270 CM



GLASS VAULT, MULTIPLE
R14082-4 | 180x270 CM
R



PULSE OF PASSION
R14091-4 | 180x270 CM
R



PULSE OF PASSION, WHITE
R14092-4 | 180x270 CM
R



UP
R14101-9 | 405x270 CM



SASSY ZIGZAG
R13941-4 | 180x270 CM
R



RAINBOW PALETTE
R13961-4 | 180x270 CM
R

ORDER OPTION: CUSTOM SIZES



- 1.) Select your wallpaper from the collection book or on our website.
- 2.) Measure the height and the width of your wall.
- 3.) Add the width and height of your wall to your order. We produce the wallpaper with your measurements and deliver in a few days.

R = REPEATABLE

ARTICLE NO	NAME	PAGE	ARTICLE NO	NAME	PAGE
R13931	Birch Bark Braids	18	R14042	Patchwork Play, Gray	27
R13932	Birch Bark Braids, White	19	R14051	Balloons Flying High	28-29
R13941	Sassy Zigzag	42-43	R14061	Stacked Suitcases	32-33
R13951	Lenses	34	R14062	Stacked Suitcases, Heap	33
R13952	Lenses, Peach	35	R14063	Stacked Suitcases, Pile	33
R13961	Rainbow Palette	44-45	R14064	Stacked Suitcases, Boards	33
R13971	Typomania	10-11	R14071	Elevation Lines, White	31
R13981	Blank Pages	12-13	R14073	Elevation Lines	30
R13992	Climbing Clorofyl, Wood	15	R14081	Glass Vault	36
R13993	Climbing Clorofyl	14	R14082	Glass Vault, Multiple	37
R14001	Leaf Love	16	R14091	Pulse of Passion	38
R14002	Leaf Love, Mirrored	17	R14092	Pulse of Passion, White	39
R14011	Cuddle Clouds	20-21	R14101	Up	40-41
R14021	Note Sheets	22	R14112	Perfect Fit, Mint Green	7
R14024	Note Sheets, Denim	23	R14113	Perfect Fit, Powder Pink	6
R14031	In the Spotlight	24-25	R14121	Leather Rhombs	8
R14041	Patchwork Play	26	R14122	Leather Rhombs, Vintage	9



BE A REBEL - CLAIM YOUR SPACE