

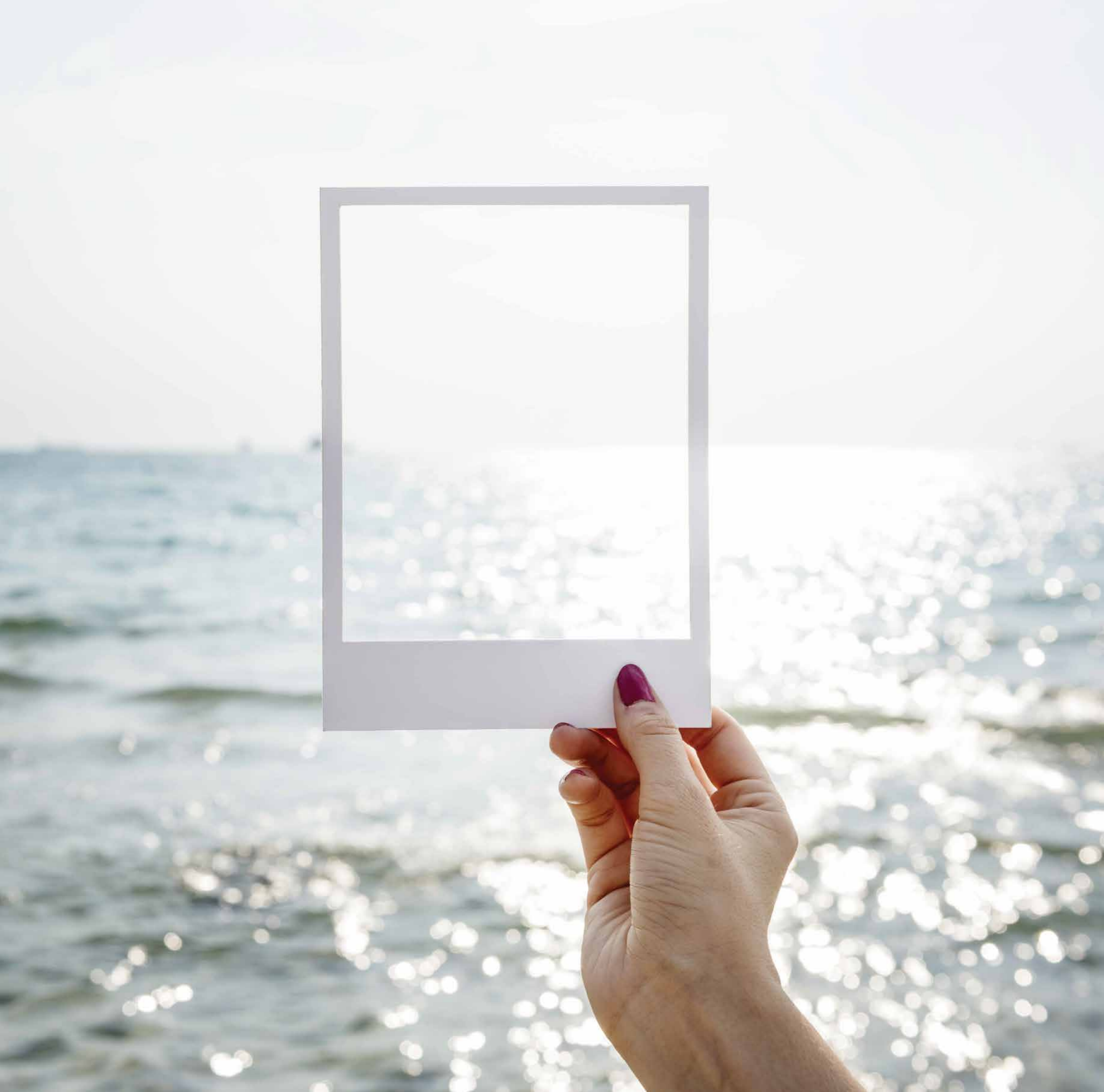
 LIENZOS®

# Wallmurals

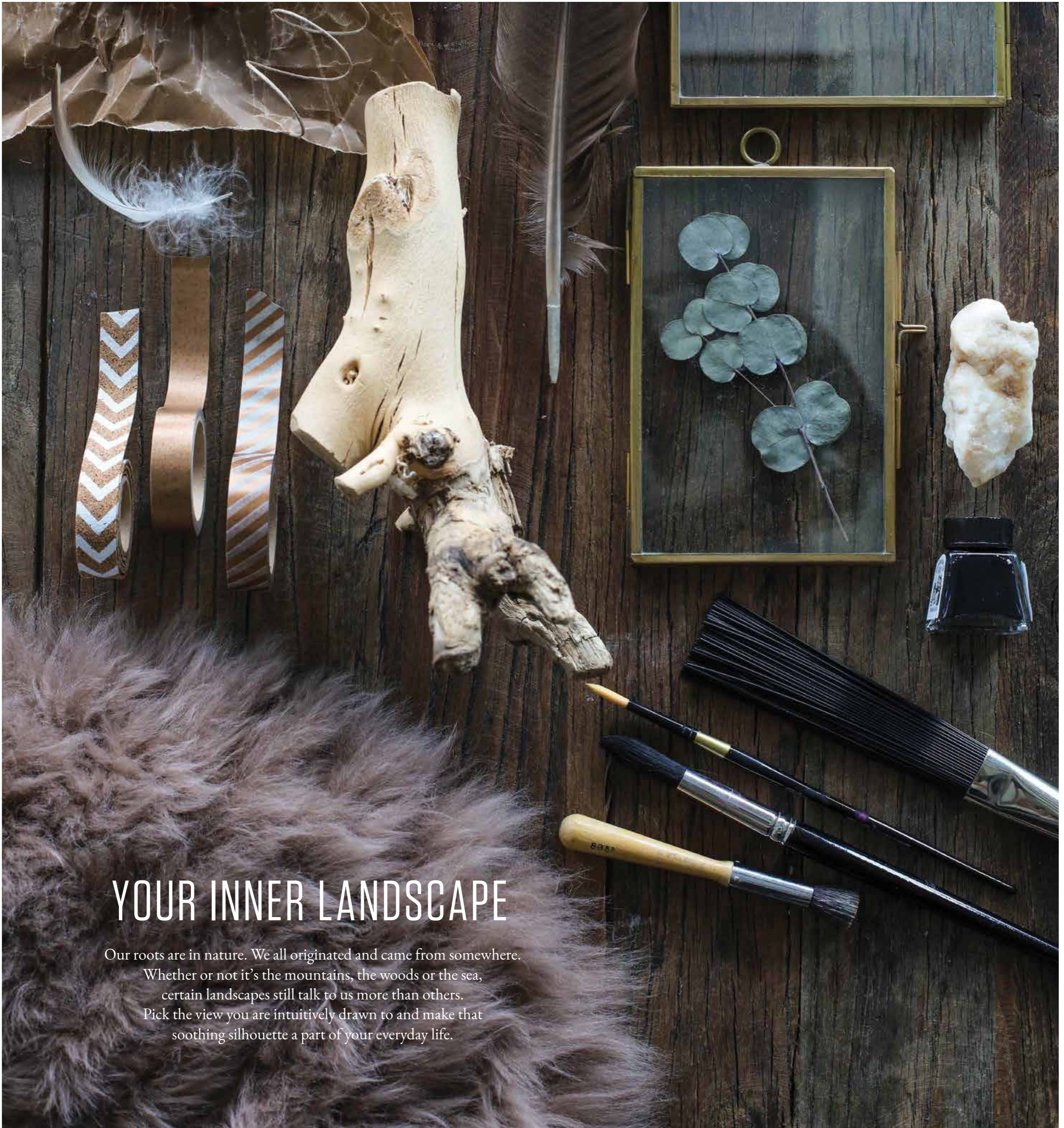


SCANDINAVIA









# YOUR INNER LANDSCAPE

Our roots are in nature. We all originated and came from somewhere. Whether or not it's the mountains, the woods or the sea, certain landscapes still talk to us more than others. Pick the view you are intuitively drawn to and make that soothing silhouette a part of your everyday life.



# CHAPTERS



ENTER | PAGE 6-17



EAT | PAGE 18-29



RELAX | PAGE 30-41



WORK | PAGE 42-53



PLAY | PAGE 54-65

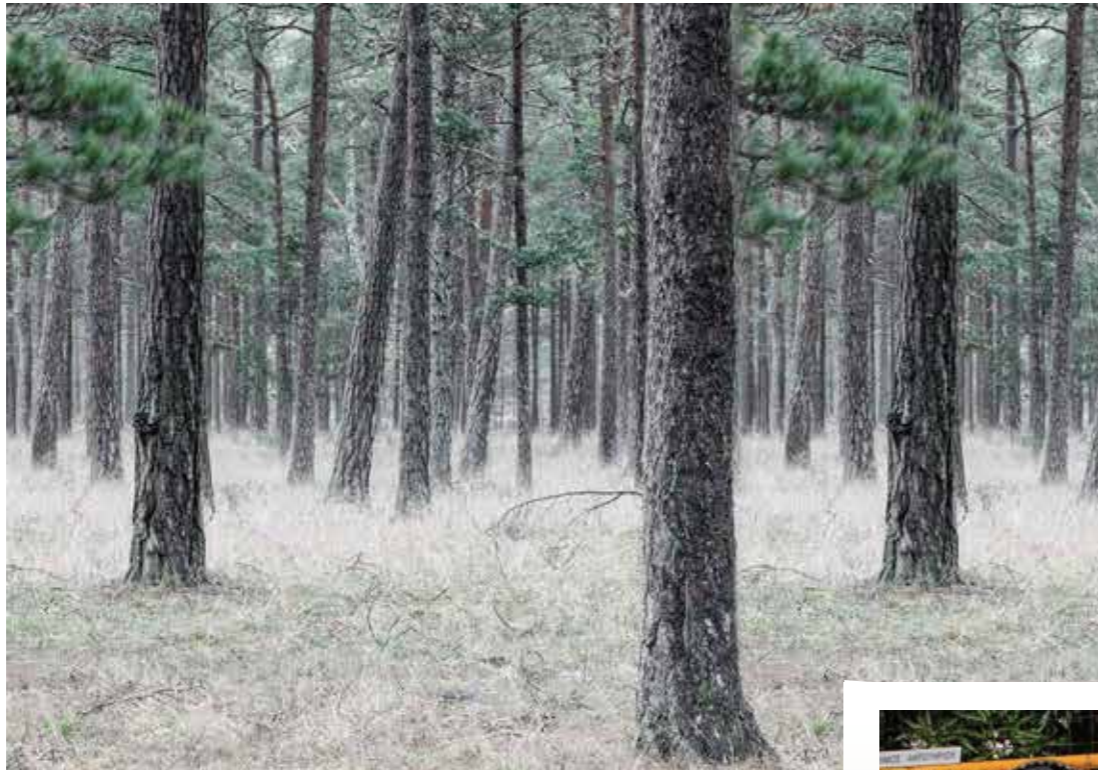


SLEEP | PAGE 66-77



# ENTER

When you're entering the wilderness of nature; standing by the foot of a mountain, by the edge of the woods or overlooking the sea you're about to dive in to – do it gracefully. Be present, grateful and open for new meetings and they will come. The same approach can be applied to you while entering a new workplace, home or public building.



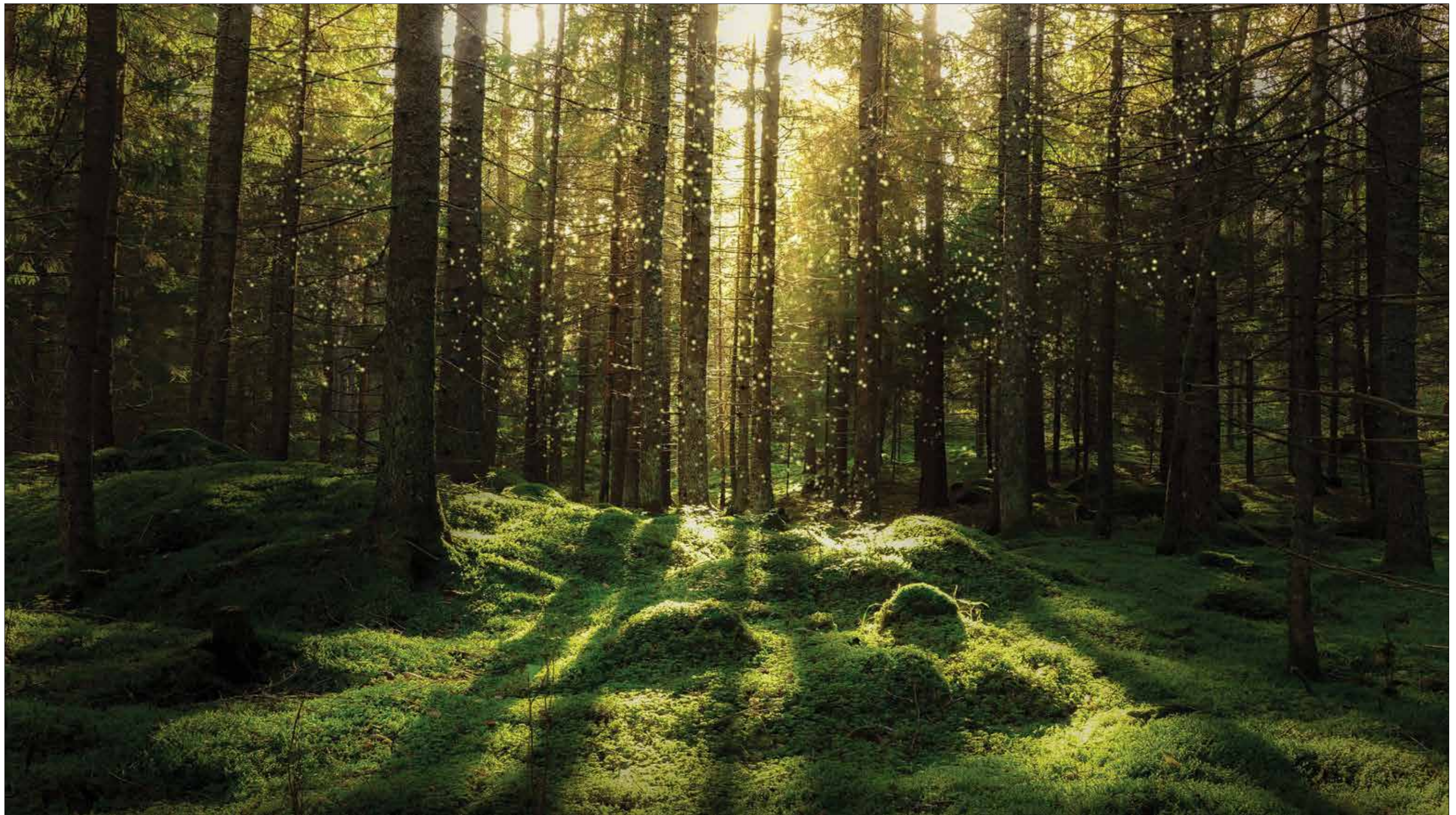






## FOREST BATH

Being in the forest calms us down. This wall mural with its soft green moss and magical natural light is perfect for a room or business who wants to convey peace and harmony.



R16641







## COTTAGE ISLAND

A thin layer of ice can be seen on the water, surrounding this well-preserved summer dream in red.



R16331







# BOULDER

These huge stone blocks form a spontaneous obstacle course dividing the small puddles in the foreground from the big lake seen in the background.



R16431



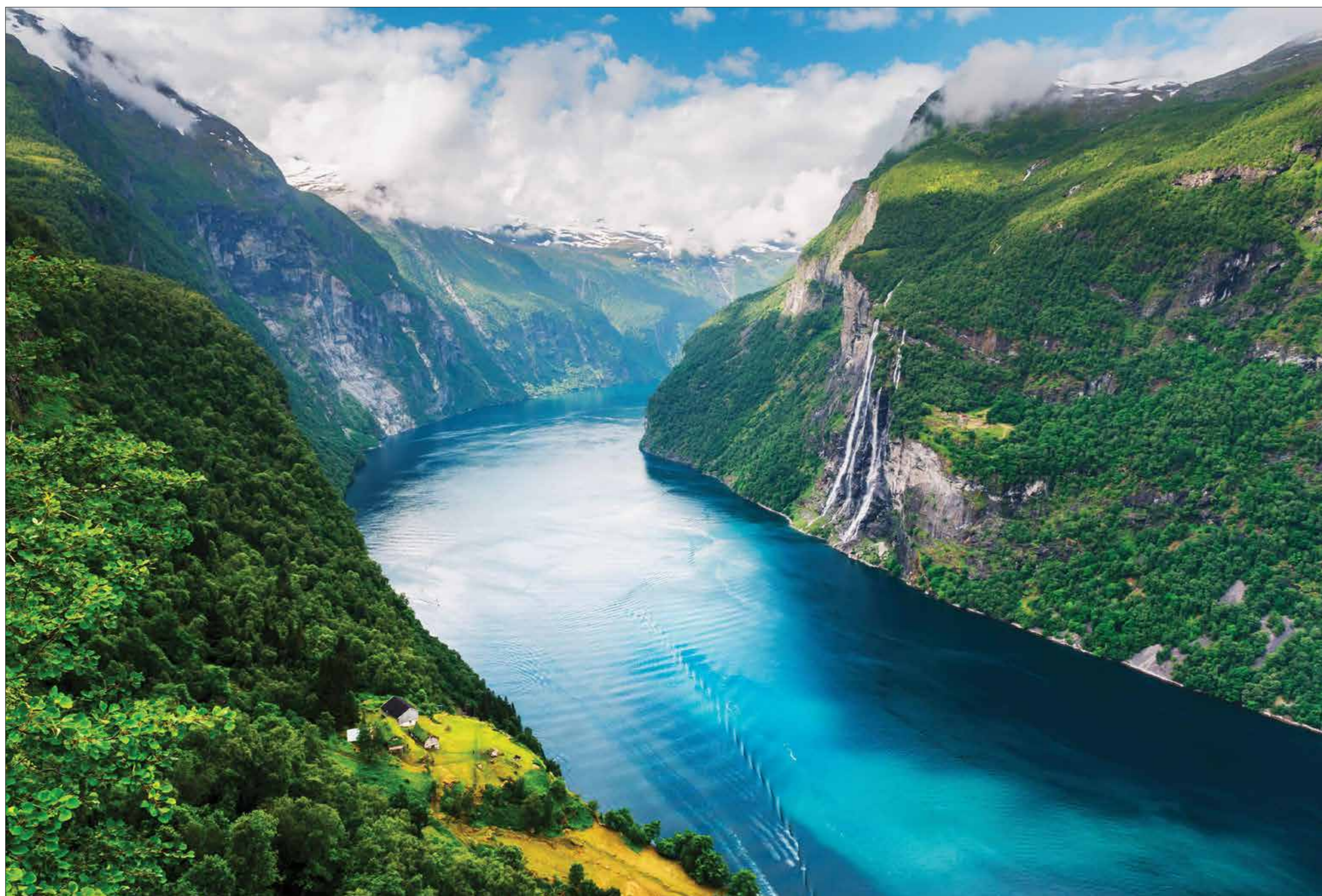






# FJORD

The steep mountainsides of Sunnlyvsfjorden in Norway frame the cold turquoise water whose ancient journey helped shape this landscape.



R16411








## PINE FOREST

Step into this spellbinding pine forest and see where the path takes you.



R13711 









# EAT

Nothing tastes as good indoors as it does outdoors. Like the first cup of coffee at the campfire after a good night's sleep under the stars? Unbeatable, but not always doable. Help your appetite on the way with delightful wall murals inspired by nature.









## BOTTLE POST

Imagine that you got the keys to this solitary coast cabin. What would you do? Who would you invite?  
This wall mural has a painted effect that enhances the motif.



R16521









# POPPIES

A field of poppies in full bloom striving towards the sun. Can you think of a more poetic motif?



R16391 







## WOODEN FENCE

Green is per definition the richest color, the color the human eye can distinguish most different shades of. This wall mural has a painted effect that enhances the motif.



R16541







## UNDER THE TREE

The leaves have fallen to the ground and the branches of the tree are left naked.  
A peaceful motif in all its simplicity.



R13631







# MOUNT GIANT

These enormous mountains show, besides great strength, an inspiring color palette of burnt earth tones.



R16451







# RELAX

Being in nature eases our minds, but did you know that just by looking at photos of nature our heart rate goes down and our breathing gets calmer? And of course, it doesn't make it worse if the photos are taken by real passionate and professional photographers.









## HOME OF GIANTS

Jotunheimen is a largely undisturbed mountain area in eastern Norway. The name means “home of the giants”. This mural displays a beautiful landscape view, untouched by mankind, except for one detail. Can you spot it?



R16441








## TREE SOLDIERS

Like soldiers standing to attention, gazing at the horizon, this graphic black-and-white wall mural adds a nature-inspired style element to your room.



R12981 







# CROPLAND

The sky couldn't be closer to the farmland than it is in this uncluttered wall mural.



R16481

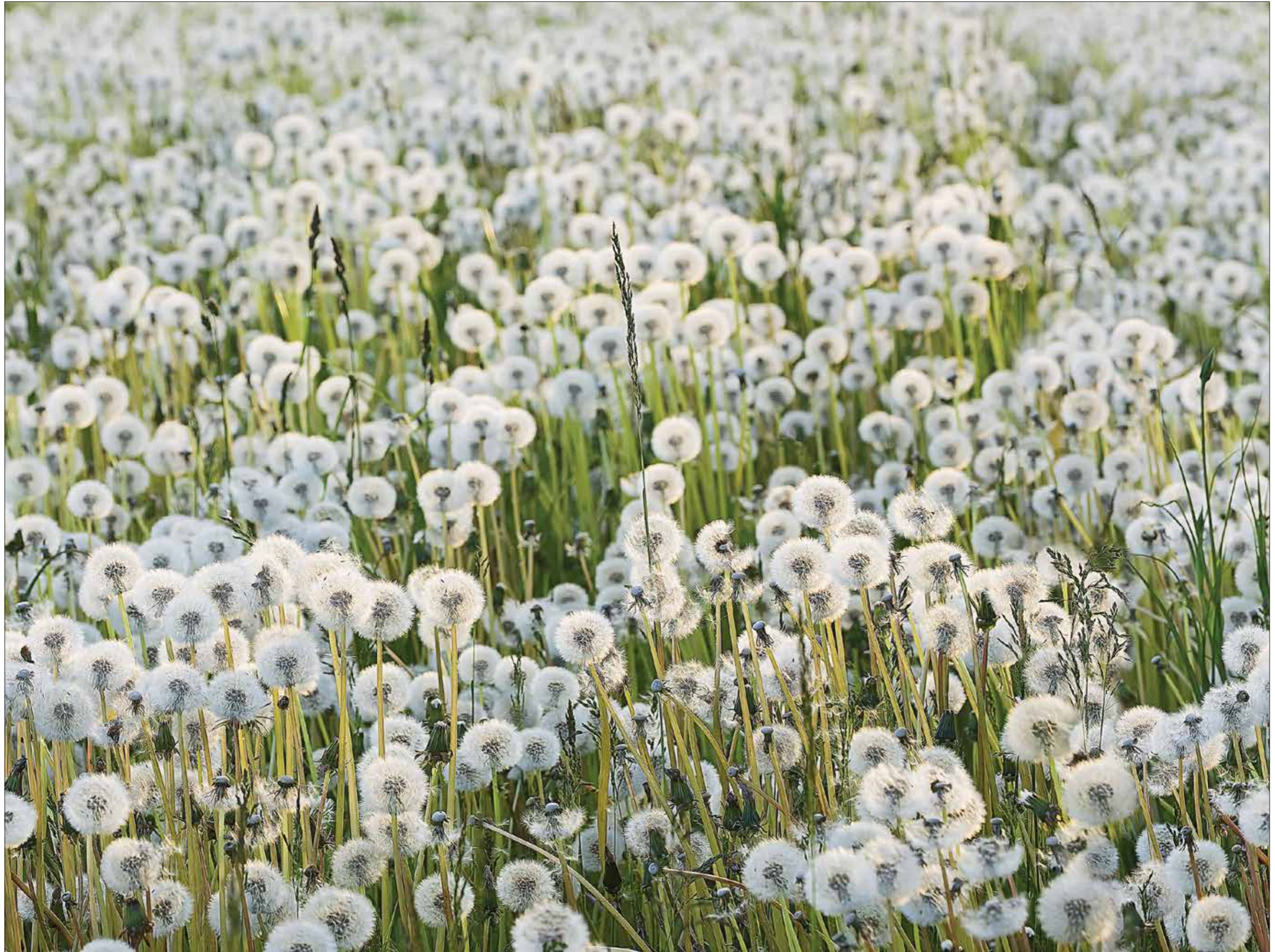






## DANDELIONS

A strong gust of wind and this wall mural motif will look completely different. We are happy to have captured this miniature "cloud landscape" before the seeds of the dandelions swirl away. This wall mural has a painted effect that enhances the motif.



R16351 **R**







## BLUE FOREST

This unspoiled forest view in green and seductive blue really makes you want to draw a deep breath and just stand still for a moment.



R16661







# WORK

Honor the pause. Get your eyes off the screen and glance out the window, don't have a picture perfect view? Restore your focus by resting your eyes on a wall mural with a spectacular landscape scene.









## PALE SHORE

For those who love the pale neutral color palette of the sandbanks on a cloudy day. The off-white beach and the soft gray clouds in the sky really set the mood.



RIG341







## SOFT ROCKS

Water and wind have in conspiracy spent the last thousands of years shaping this soft coastline, where both land and sea seem to have a silky smooth surface.



R16401





WORK 47

REBEL WALLS #13 | SCANDINAVIA



# LIGHTHOUSE

Adorn your room with a coast near motif. The lighthouse is a symbol of search, for the good and bright in life.



R16311

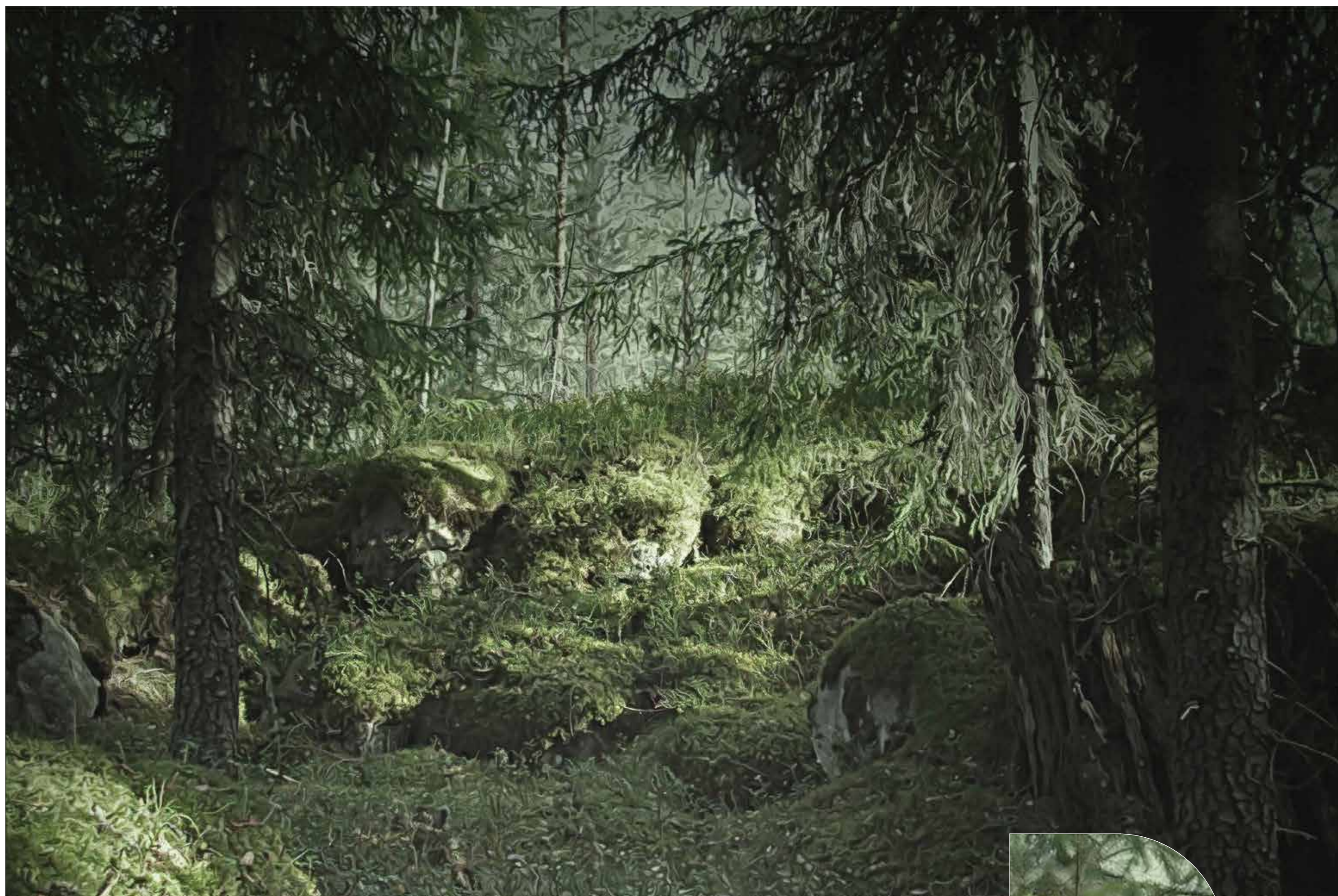






# VIRGIN FOREST

To be left untouched. At peace. In tranquillity. This forest is one of the last virgin forests on the planet and a well-preserved hideaway for those who need to escape the noise of the city for a while. This wall mural has a painted effect that enhances the motif.



R16531







WORK 51

REBEL WALLS #13 | SCANDINAVIA



# TROLLTUNGA

“The tongue of a troll” is what Trolltunga in Norwegian means.

If you are brave enough to step onto the tip of the tongue, you will be staring down at the cold glacial waters 700 meters below you.



RI6461





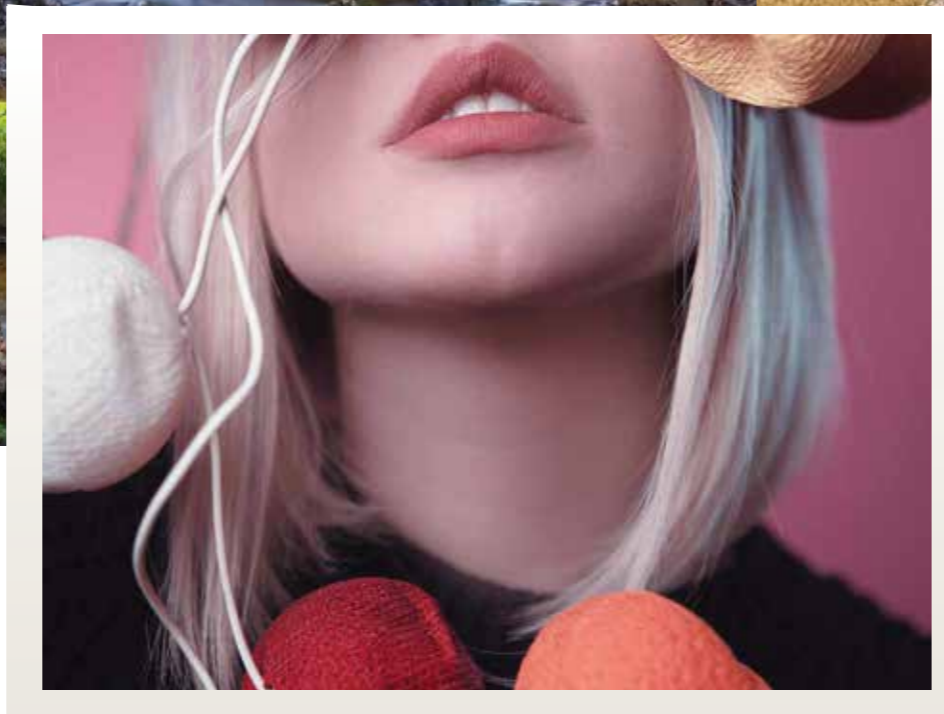
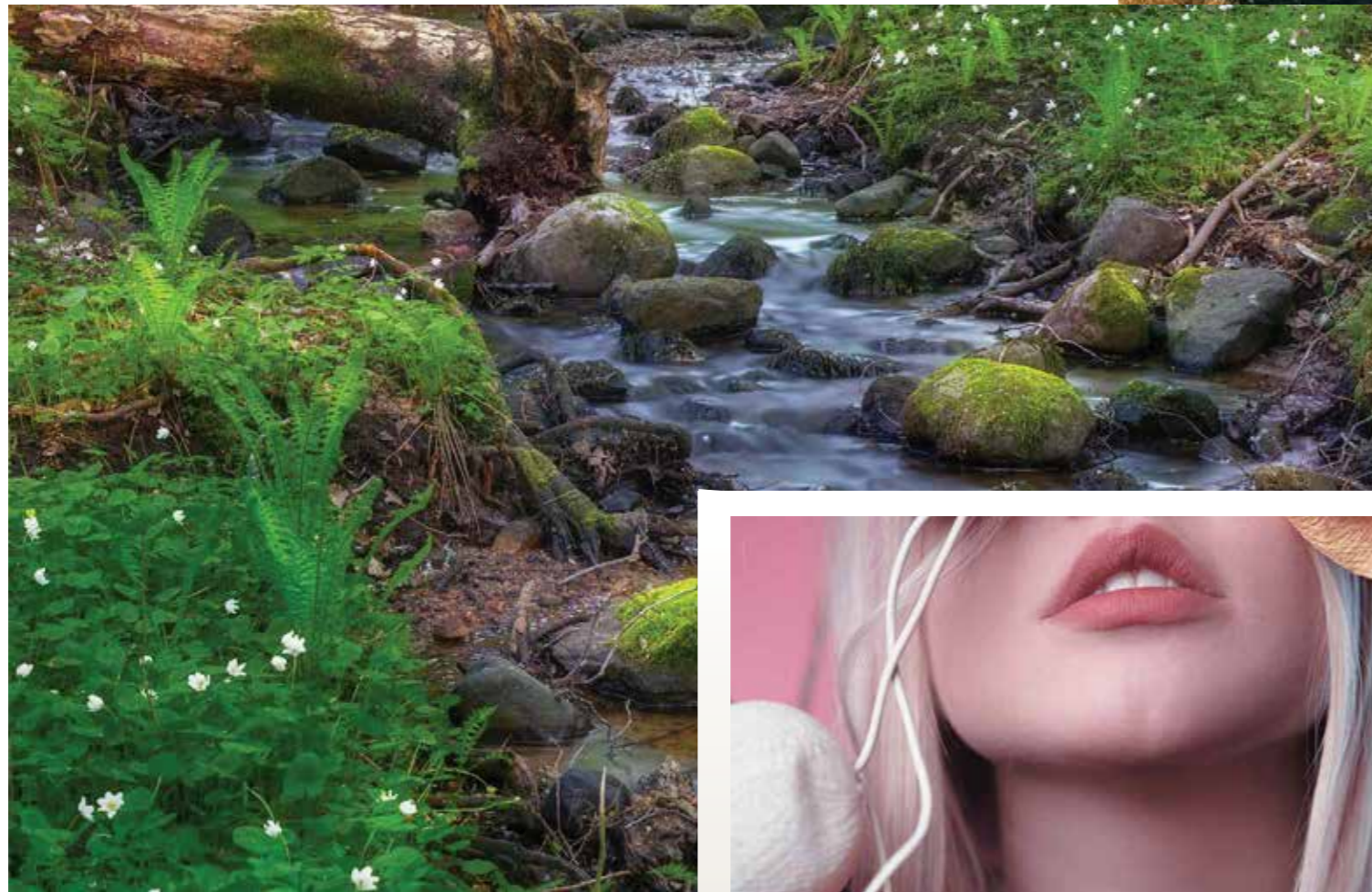
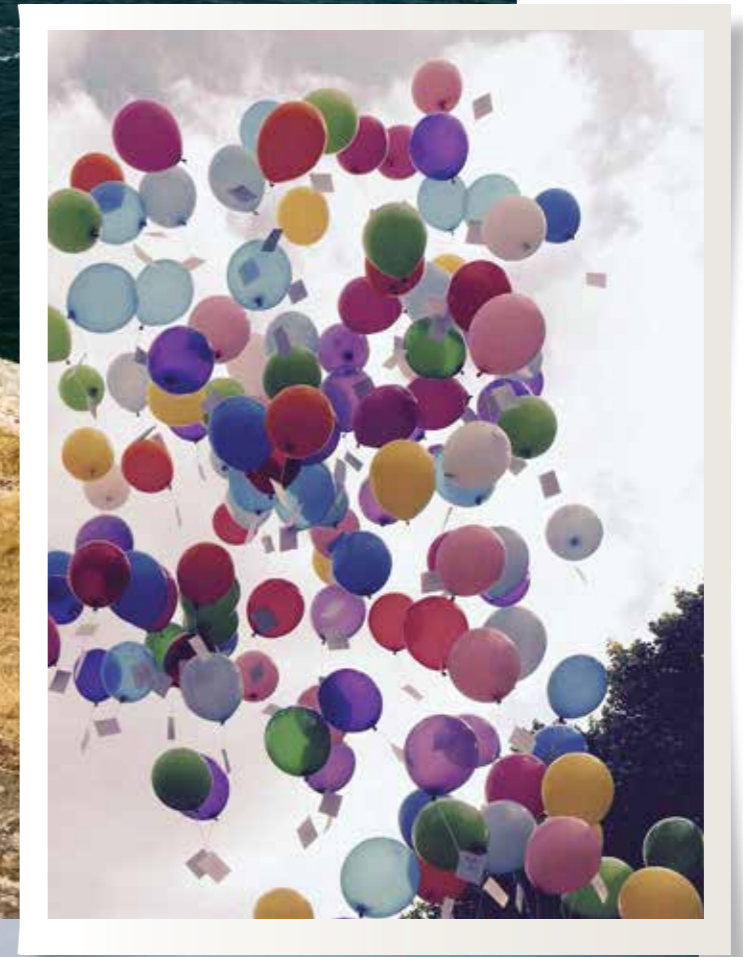
WORK 53

REBEL WALLS #113 | SCANDINAVIA



# PLAY

To be able to play has no age limit and above all – it is not a material sport. Offer your own kid, or your inner child, a backdrop that breathes freedom, adventure, and new impressions. Don't try to steer the river, go with the flow.









# BAREBACK

Could you imagine a better place to rest than within this magnificent view?  
These horses are lucky enough to be living at Bornholm, one of Denmark's most beloved islands.



R16471







# STREAM

No water – no life. Bring one of the four natural elements into your room, with this peaceful wall mural.



R16381







# HORIZON

Can a spectacular outlook like this help you get some valuable insights too?  
We like to think so. Raise your gaze at the office or at home.



R16321







PLAY 61

REBEL WALLS #113 | SCANDINAVIA



## COAST LIFE

Life is simple when you're on a sailboat.  
Let this wonderful view from Bohuslän in Sweden add simplicity to your life.



RI6501







# NORTHERN LIGHTS

Experience the enchantment of the northern lights.  
This mesmerizing view is captured in the fjords of Norway.



R16491





PLAY 65

REBEL WALLS #113 | SCANDINAVIA



# SLEEP

Getting your regular dose of daylight improves the quality of your night sleep. To rest your eyes on natural elements such as mountain peaks or the tiny waves of a calm sea will make both falling asleep and waking up more pleasant.









# THE NORTH

Barren but honest. Rough but true. Welcome to the dramatic scenes of the wild north.



RIG371





SLEEP 69

REBEL WALLS #13 | SCANDINAVIA



# FOREST LAKE

This photo is taken in the middle of the night in the north of Sweden.  
A rare place on earth where it doesn't get light during the days of winter nor dark during the nights of summer.



R16421





SLEEP 71

REBEL WALLS #13 | SCANDINAVIA



## SEA SUNRISE

The sun is just about to rise on the horizon. Everything is silent and still, except for the sound and sight of the waves rolling in.



R16361 **R**





SLEEP 73

REBEL WALLS #13 | SCANDINAVIA



## THE WIND

This view is from the island of Jylland in Denmark.  
The wind helps both shape the landscape and change the weather.



R16511





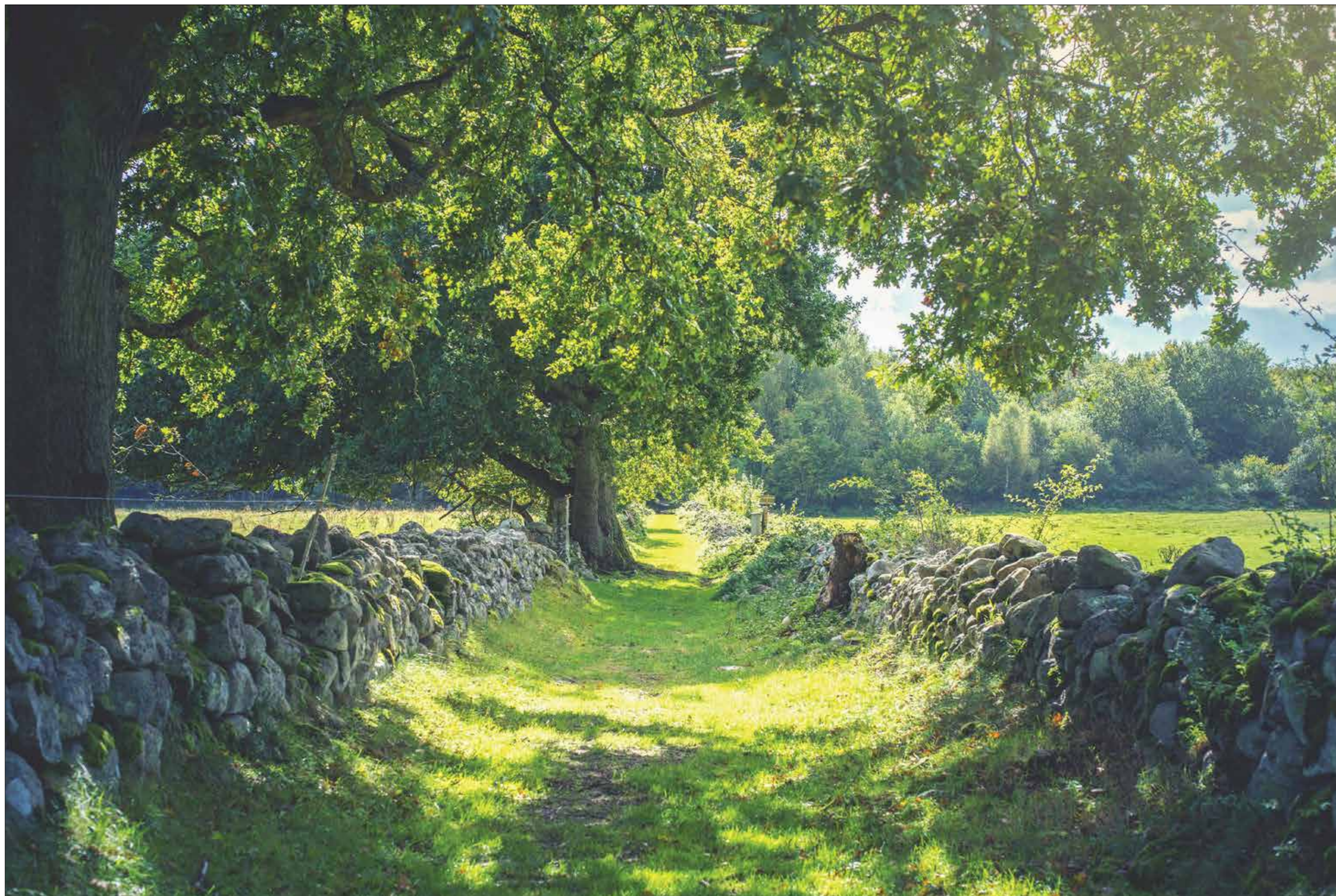
SLEEP 75

REBEL WALLS #13 | SCANDINAVIA



## EARLY SUMMER

Scandinavia has a few blessed months when every flower, bush, tree, and farmland peeks in vigor and beauty. A lush period in strong contrast to the cold winters.



R16851

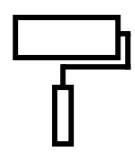




SLEEP 77

REBEL WALLS #13 | SCANDINAVIA



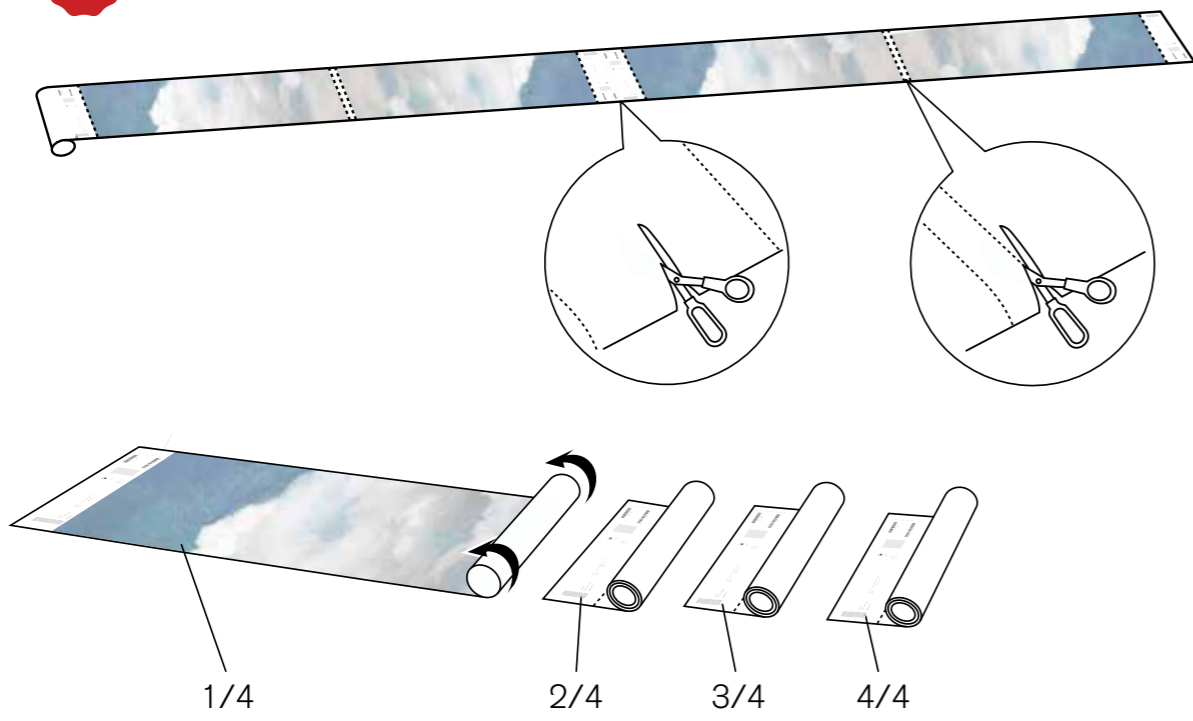


# HANGING INSTRUCTIONS

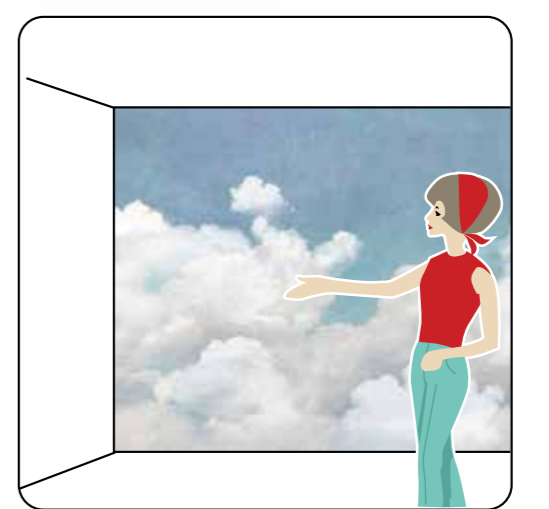
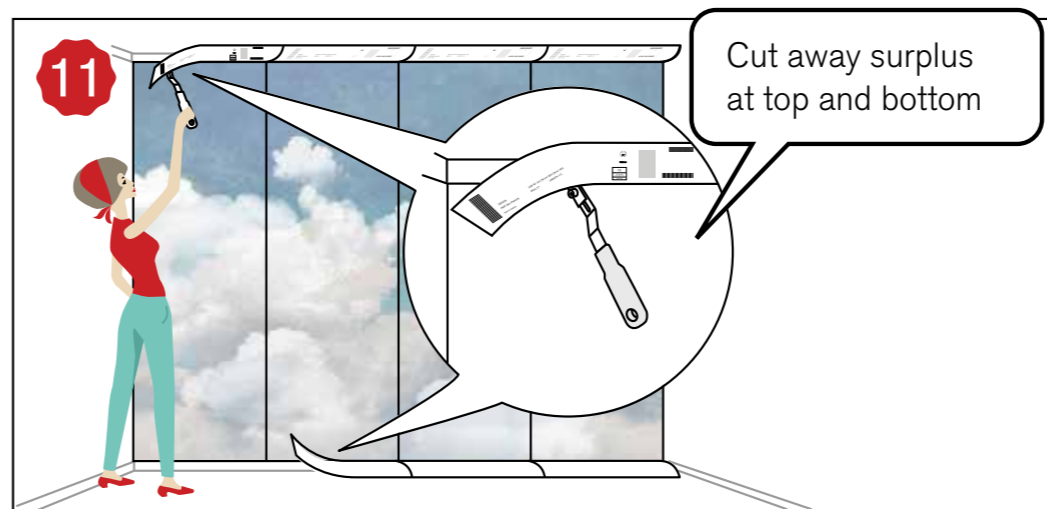
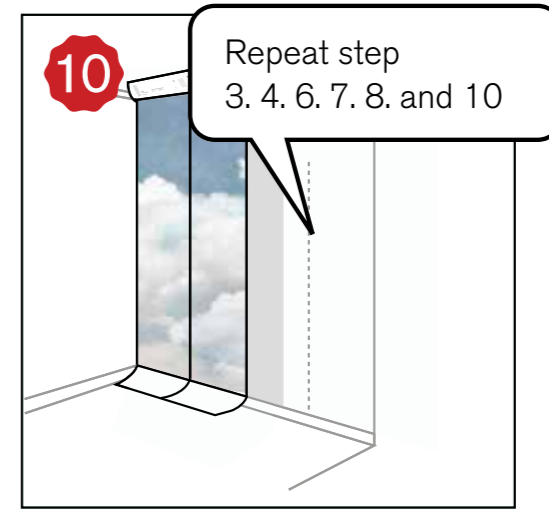
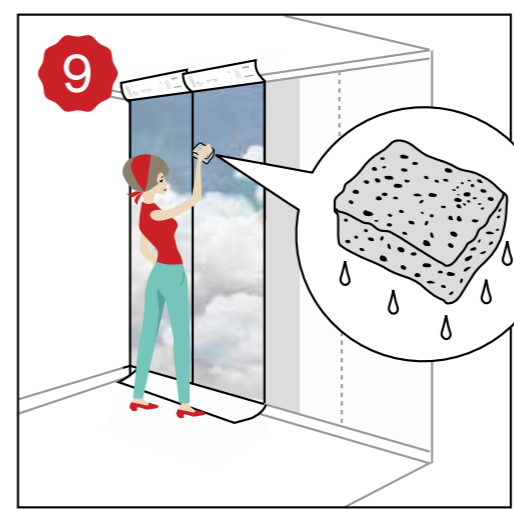
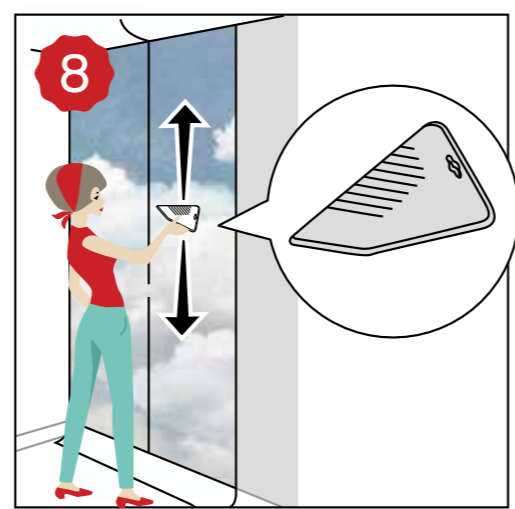
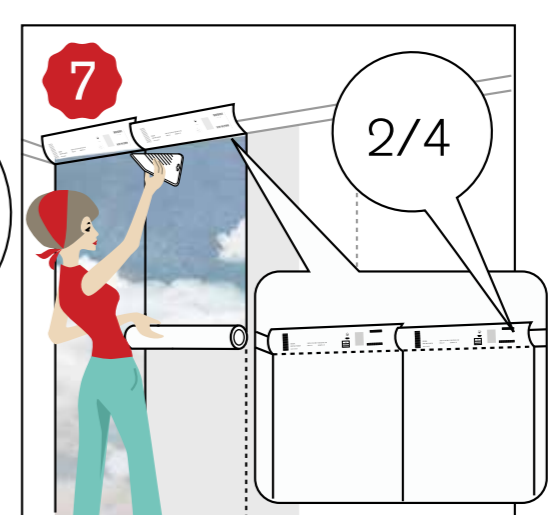
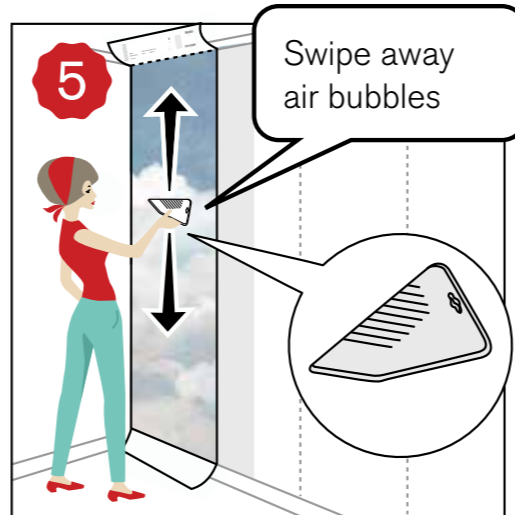
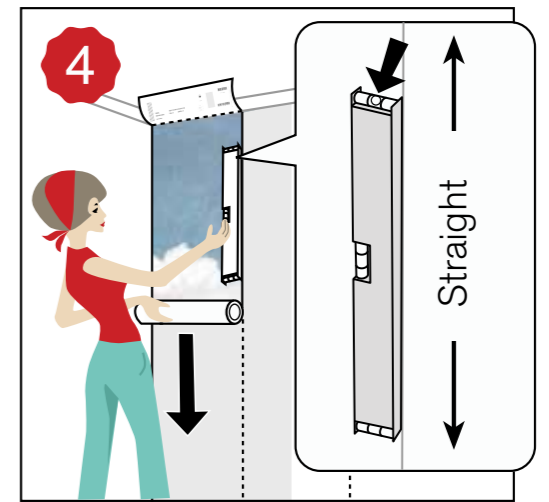
Follow these hanging instructions and your wallpaper will be up in no time!

→↔ = STRAIGHT MATCH

1



45 CM







## BEFORE YOU BEGIN

The surface of the wall must be smooth, clean, dry and sound. Flaking paint and loose wallpaper should be removed, and any uneven surfaces must be filled. Give the wall a prime coating if its colour is very different to the new wallpaper. Very absorbent surfaces, such as plaster walls, should be sized.

|  |  |
|--|--|
|  |  |
|--|--|

|  |  |
|--|--|
|  |  |
|--|--|



## FÖRE TAPETSERING

Väggen ska vara slät, ren, torr och väl förankrad. Gammal färg och tapet som inte sitter fast måste tas bort och spacklas över vid behov. Grundmåla om väggen har starka färgskiftningar. Förlimma om underlaget är starkt sugande, som exempelvis en gipsvägg.

|  |  |
|--|--|
|  |  |
|--|--|

|  |  |
|--|--|
|  |  |
|--|--|



## VOR DEM TAPEZIEREN

Die Wand muss glatt, sauber, trocken und gut befestigt sein. Alte, nicht fest haftende Farbreste, sowie Tapetenreste sind zu entfernen und bei Bedarf zu verspachteln. Die Wand muss neu grundiert werden, falls sie starke Farbunterschiede zur neuen Tapete aufweist. Wenn die Unterlage, wie z. B. eine Gipswand, sehr saugfähig ist, muss sie eingekleistert werden.

|  |  |
|--|--|
|  |  |
|--|--|

|  |  |
|--|--|
|  |  |
|--|--|



### AVANT DE COMMENCER

La surface du mur doit être lisse, propre, sèche et saine. La peinture qui s'écaille et les résidus de l'ancien papier peint doivent être enlevés. Toutes les surfaces inégales doivent être égalisées. Appliquez une sous couche sur le mur, si sa couleur est très différente du nouveau papier peint. Les surfaces très absorbantes, comme des murs de plâtre, doivent être enduites.

|  |  |
|--|--|
|  |  |
|--|--|

|  |  |
|--|--|
|  |  |
|--|--|



## ANTES DE EMPEZAR

La superficie de la pared debe estar lisa, limpia, seca y sanuada. Cualquier resto de papel opintura deben ser eliminados, y si hay huecos deben ser masillados. Dar la pared una capade imprimación, en caso de paredes nuevas de yeso, madera o de placas de yeso prefabricado tipo Pladur. Se recomienda pintar la pared de un color similar al del fondo del mural si ésta no fuera de color blanco.

|  |  |
|--|--|
|  |  |
|--|--|

|  |  |
|--|--|
|  |  |
|--|--|



### ENNEN TAPETOINTIA

Seinän tulee olla sileä, puhdas, kuiva ja luja. Poista itormaali ja –tapetit ja silota seinä tarvittaessa. Pohjamaalaa seinä, jos siinä on suuria sävyeroja. Esiilimaa voimakkaasti imevä alusta kuten esimerkiksi kipsiseinä.

|  |  |
|--|--|
|  |  |
|--|--|

|  |  |
|--|--|
|  |  |
|--|--|



## ПОДГОТОВКА К НАКЛЕВАНИЮ

Поверхность стены должна быть гладкой, чистой, сухой и прочной. Удалите отслаивающуюся краску или остатки старых обоев и зашлифуйте все неровности. Если цвет стены сильно отличается от цвета обоев, се необходимо загрунтовать. Поверхности с сильной впитывающей способностью (например, оштукатуренные) следует предварительно промазывать клеем.

|  |  |
|--|--|
|  |  |
|--|--|

|  |  |
|--|--|
|  |  |
|--|--|



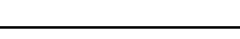
#### 粘貼前注意事項

牆面必須平滑、潔淨、干燥、完好。應消除剝落的油漆或松動的壁紙，且必須填平任何不平整的表面。如果牆面與新壁紙的顏色存在較大差異，請為牆面塗抹底漆。石膏牆等吸附能力較強的牆面應塗抹胶料。

### RECOMMENDED TOOLS

- Rollers and tray
- Bucket
- Pencil
- Craft knife
- Paintbrush (For the areas that the roller misses, e.g. along the ceiling and skirting boards)

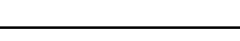
|  |  |
|--|--|
|  |  |
|--|--|



## REKOMMENDERADE VERKTYG

- Roller & Tråg
- Hink
- Pensel (Där rollern inte kommer åt t.ex. vid tak och lister)
- Vattenpass eller lod (För att kontrollera att tapetväden hänger rakt)
- Tapetverktyg eller borste

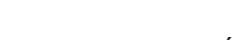
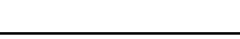
|  |  |
|--|--|
|  |  |
|--|--|



## EMPFOHNENES WERKZEUG

- Roller und Schale
- Eimer
- Pinself (für mit dem Roller nicht erreichbare Stellen, z. B. Leisten)
- Wasserwaage oder Lot (zur Kontrolle, ob die Tapetenbahn gerade hängt)
- Tapetierwerkzeug oder Bürste

|  |  |
|--|--|
|  |  |
|--|--|



### OUTILS RECOMMANDÉS

- Rouleaux et table
- Seau
- Pinceau (pour les zones où ne passe pas le rouleau, par exemple le long du plafond et des plinthes)
- Niveau à bulle ou le fil à plomb (pour s'assurer que le papier peint est droit)

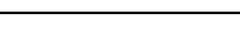
|  |  |
|--|--|
|  |  |
|--|--|



## HERRAMIENTAS RECOMENDADAS

- Rodillos y bandeja
- Cubo
- Nivel de burbuja o plomada (Para asegurarse de que el papel pin tado se instala recto)
- Cutter
- Cepillo

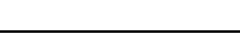
|  |  |
|--|--|
|  |  |
|--|--|



## SUOSITELLUT TYÖKALUT

- Tela ja kaukalo
- Sanko
- Sivellin (paikkoihin, joihin telalla ei pääse esim. katonrajat ja listavierustat)
- Vesivaaka tai luotilanka (tapetti-vuodan pystysuoruuden tarkastamiseen)

|  |  |
|--|--|
|  |  |
|--|--|

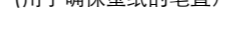
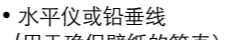
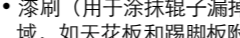
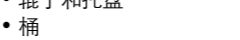
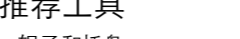


## РЕКОМЕНДОВАННЫЕ ИНСТРУМЕНТЫ

- Валики и поддон
- Ведро
- Малярная кисть для нанесения клея в труднодоступных местах (например, у потолка или вдоль плинтуса)
- Спиртовой уровень или отвес (для выравнивания обоев)

|  |  |
|--|--|
|  |  |
|--|--|

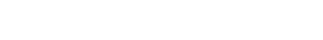
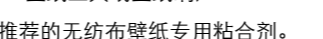
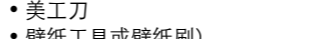
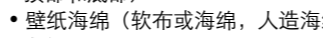
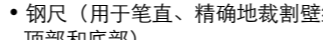
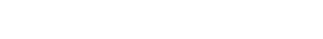
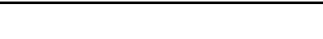
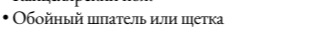
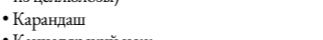
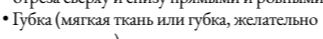
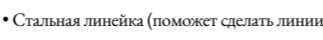
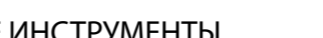
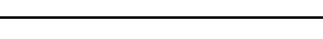
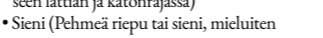
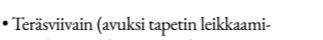
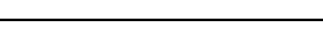
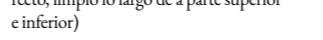
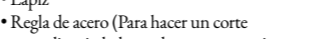
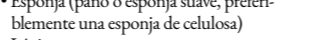
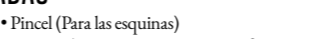
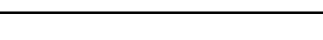
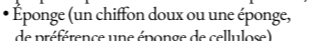
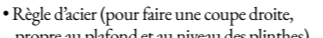
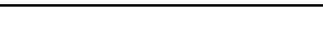
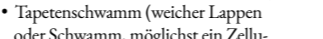
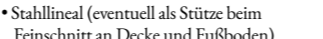
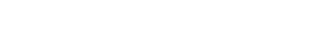
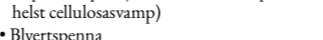
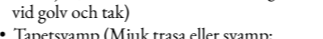
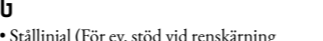
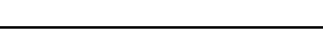
|  |  |
|--|--|
|  |  |
|--|--|



## RECOMMENDED TOOLS

- Wallpaper sponge (Soft cloth or sponge, preferably a cellulose sponge)
- Spirit level or plumb line (To make sure the wallpaper is straight)
- Steel ruler (To make a straight, clean cut along the top and bottom)
- Wallpapering tool or brush

|  |  |
|--|--|
|  |  |
|--|--|



### RIGHT ADHESIVE

Always use an adhesive specially recommended for non-woven wallpaper.

## HANGING WALLPAPER

Start by dividing the lengths as indicated by the cutting symbols. Lay the lengths, with the label facing upwards, in numerical order starting with length number 1. Make sure you have all the lengths and that none of them are defective or damaged.

|  |  |
|--|--|
|  |  |
|--|--|

|  |  |
|--|--|
|  |  |
|--|--|

### RÄTT LIM

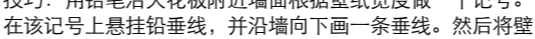
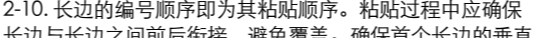
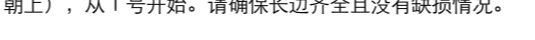
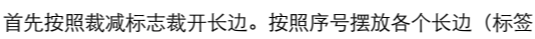
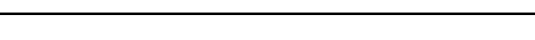
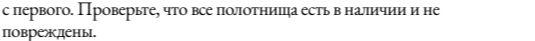
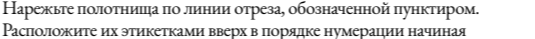
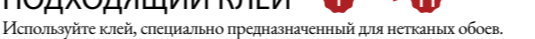
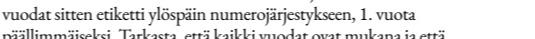
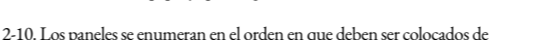
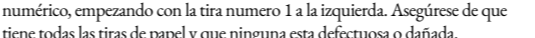
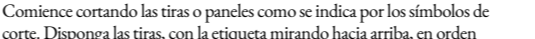
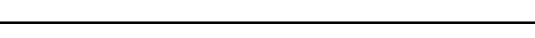
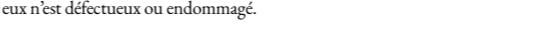
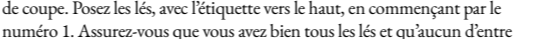
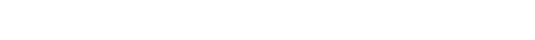
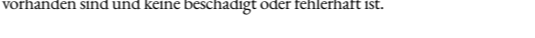
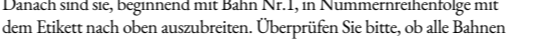
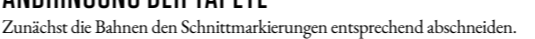
Använd alltid lim specifikt för non-woven tapeter.

## MONTERING AV TAPET

Börja med att dela isär väderna enligt skärmarkeringarna. Lägg sedan väderna med etiketten uppåt i nummerordning med väd nr.1 först. Kontrollera att alla väder är med och ingen väd är defekt eller skadad.

|  |  |
|--|--|
|  |  |
|--|--|

|  |  |
|--|--|
|  |  |
|--|--|



2-10. The lengths are numbered in the order in which they must be hung. The lengths should be hung edge to edge without any overlapping. It is essential that the first length is vertically straight. Tip: Make a pencil mark one wallpaper width along the wall near the ceiling. Hold a plumb line on the mark and draw a vertical line down the wall. Then line up your first length of wallpaper with this pencil line.

Roll the paste straight onto the wall. Be sure to evenly cover the entire surface. If you miss a spot, this will cause the wallpaper to bubble. Paste an area the width of one and a half lengths at a time. Gently and evenly press the lengths together to ensure there are no visible seams. Make sure the wall has

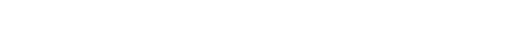
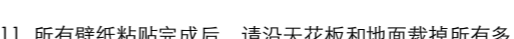
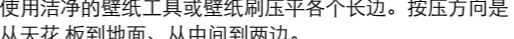
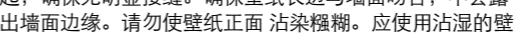
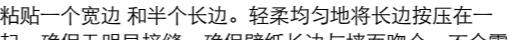
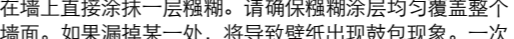
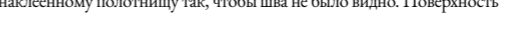
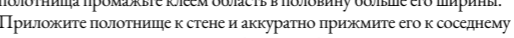
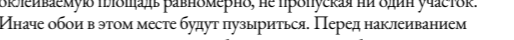
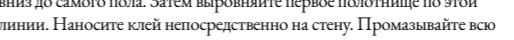
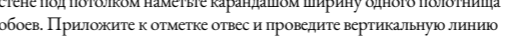
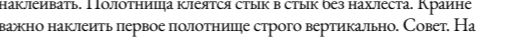
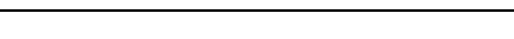
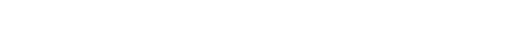
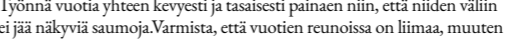
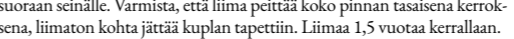
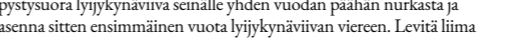
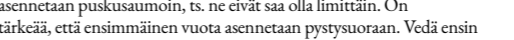
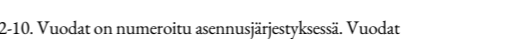
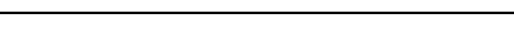
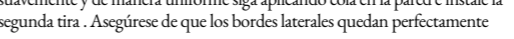
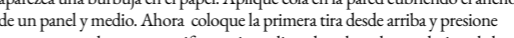
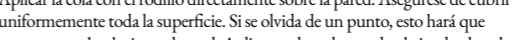
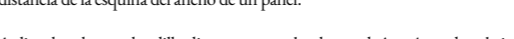
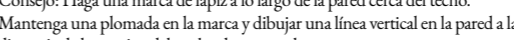
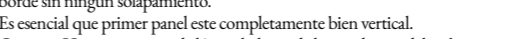
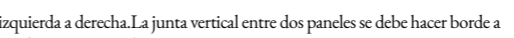
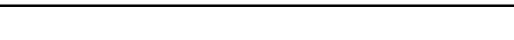
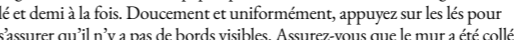
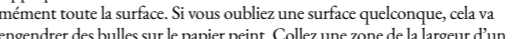
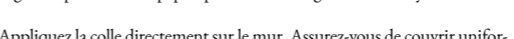
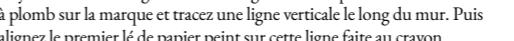
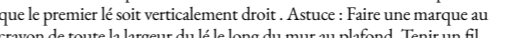
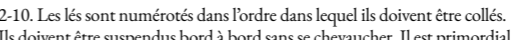
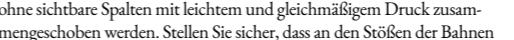
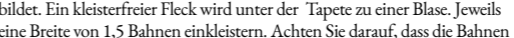
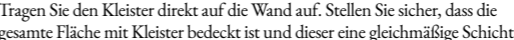
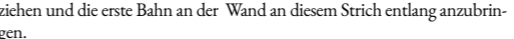
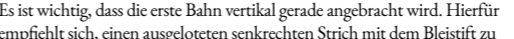
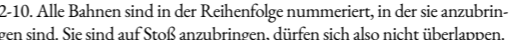
|  |  |
|--|--|
|  |  |
|--|--|

|  |  |
|--|--|
|  |  |
|--|--|

2-10. Alla väder är numererade i den följd de ska monteras. Väderna ska monteras kant i kant vilket innebär att de inte ska överlappas. Det är viktigt att första väden monteras rakt. Tips är att göra ett lodat blyertsstreck, en tapetväd i på väggen och sedan montera första väden längst med blyertsstrecket.

Rolla lim direkt på väggen. Se till att hela ytan täcks med lim och att det blir ett jämnt lager, en olinnad fläck blir en blåsa på tapeten. Limma 1,5 tapetväd i taget. Se till skjuta ihop väderna utan några synliga skarvar med ett lätt och jämnt tryck. Se till att det finns lim där

|  |  |
|--|--|
|  |  |
|--|--|





# SCANDINAVIA | OVERVIEW



R16641 | FOREST BATH



R16931 | COTTAGE ISLAND



R16431 | BOULDER



R16411 | FJORD



R13711 | PINE FOREST **R**



R16521 | BOTTLE POST



R16391 | Poppies **R**



R16541 | WOODEN FENCE



R13631 | UNDER THE TREE



R16451 | MOUNT GIANT



R16441 | HOME OF GIANTS



R12981 | TREE SOLDIERS **R**



R16481 | CROPLAND



R16351 | DANDELIONS



R16661 | BLUE FOREST





R16341 | PALE SHORE



R16401 | SOFT ROCKS



R16311 | LIGHTHOUSE



R16531 | VIRGIN FOREST



R16461 | TROLLTUNGA



R16471 | BAREBACK



R16361 | STREAM



R16321 | HORIZON



R16501 | COAST LIFE



R16491 | NORTHERN LIGHTS



R16371 | THE NORTH



R16421 | FOREST LAKE



R16361 | SEA SUNRISE **11**



R16511 | THE WIND



R16651 | EARLY SUMMER



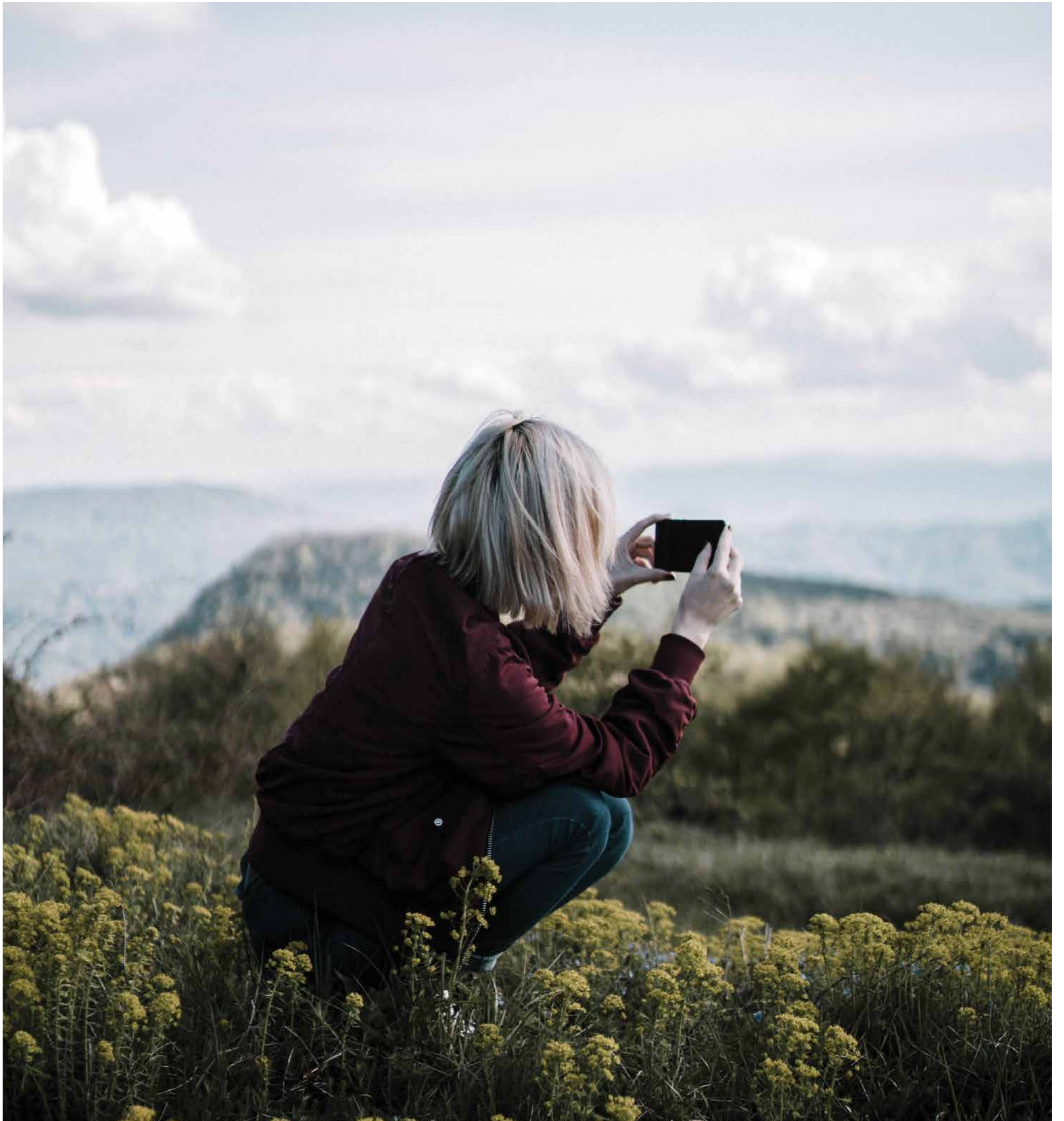
## HOW IT WORKS

---

- 1) Select your wallpaper from the collection book or on our website.
- 2) Measure the width and the height of your wall.
- 3) Add the width and height of your wall to your order. We produce the wallpaper with your measurements and deliver in a few days.

| ARTICLE NO | NAME           | PAGE  | ARTICLE NO | NAME            | PAGE  |
|------------|----------------|-------|------------|-----------------|-------|
| R12981     | Tree Soldiers  | 34–35 | R16431     | Boulder         | 12–13 |
| R13631     | Under the Tree | 26–27 | R16441     | Home of Giants  | 32–33 |
| R13711     | Pine Forest    | 16–17 | R16451     | Mount Giant     | 28–29 |
| R16311     | Lighthouse     | 48–49 | R16461     | Trolltunga      | 52–53 |
| R16321     | Horizon        | 60–61 | R16471     | Bareback        | 56–57 |
| R16331     | Cottage Island | 10–11 | R16481     | Cropland        | 36–37 |
| R16341     | Pale Shore     | 44–45 | R16491     | Northern Lights | 64–65 |
| R16351     | Dandelions     | 38–39 | R16501     | Coast Life      | 62–63 |
| R16361     | Sea Sunrise    | 72–73 | R16511     | The Wind        | 74–75 |
| R16371     | The North      | 68–69 | R16521     | Bottle Post     | 20–21 |
| R16381     | Stream         | 58–59 | R16531     | Virgin Forest   | 50–51 |
| R16391     | Poppies        | 22–23 | R16541     | Wooden Fence    | 24–25 |
| R16401     | Soft Rocks     | 46–47 | R16641     | Forest Bath     | 8–9   |
| R16411     | Fjord          | 14–15 | R16651     | Early Summer    | 76–77 |
| R16421     | Forest Lake    | 70–71 | R16661     | Blue Forest     | 40–41 |









BE A REBEL - CLAIM YOUR SPACE

