



CASA MÉRIDA



LIENZOS®

Viva la vida!

The label „**Emil & Hugo**“ by Rasch Textil celebrates the life's work of the two founding fathers of the company. Because we are proud of our roots, which continue to inspire the creative energy of our designers. In pursuit of the most beautiful and fascinating designs of today and tomorrow, we continue our journey of discovery around the world.

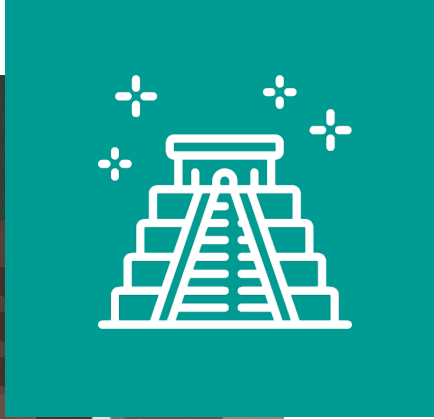




This time, we find ourselves in **Mérida**, the capital of **Yucatán** in **Mexico** and declare it to be our absolute favourite in terms of culture and lifestyle. With its colourful, vibrant and profound designs, the collection successfully and uniquely combines the **Mexican temperament** with the modern.



The **UXMAL** design invokes the pyramid shape of the famous Maya ruins near Mérida, the **EL PALMAR** motif is inspired by the exotic palm tree species *Livistona Benthami* and represents the untouched flora of the nature park of the same name, while the **MIRADOR** digital print means "the eye-catcher" and at the same time embodies the famous Maya metropolis.

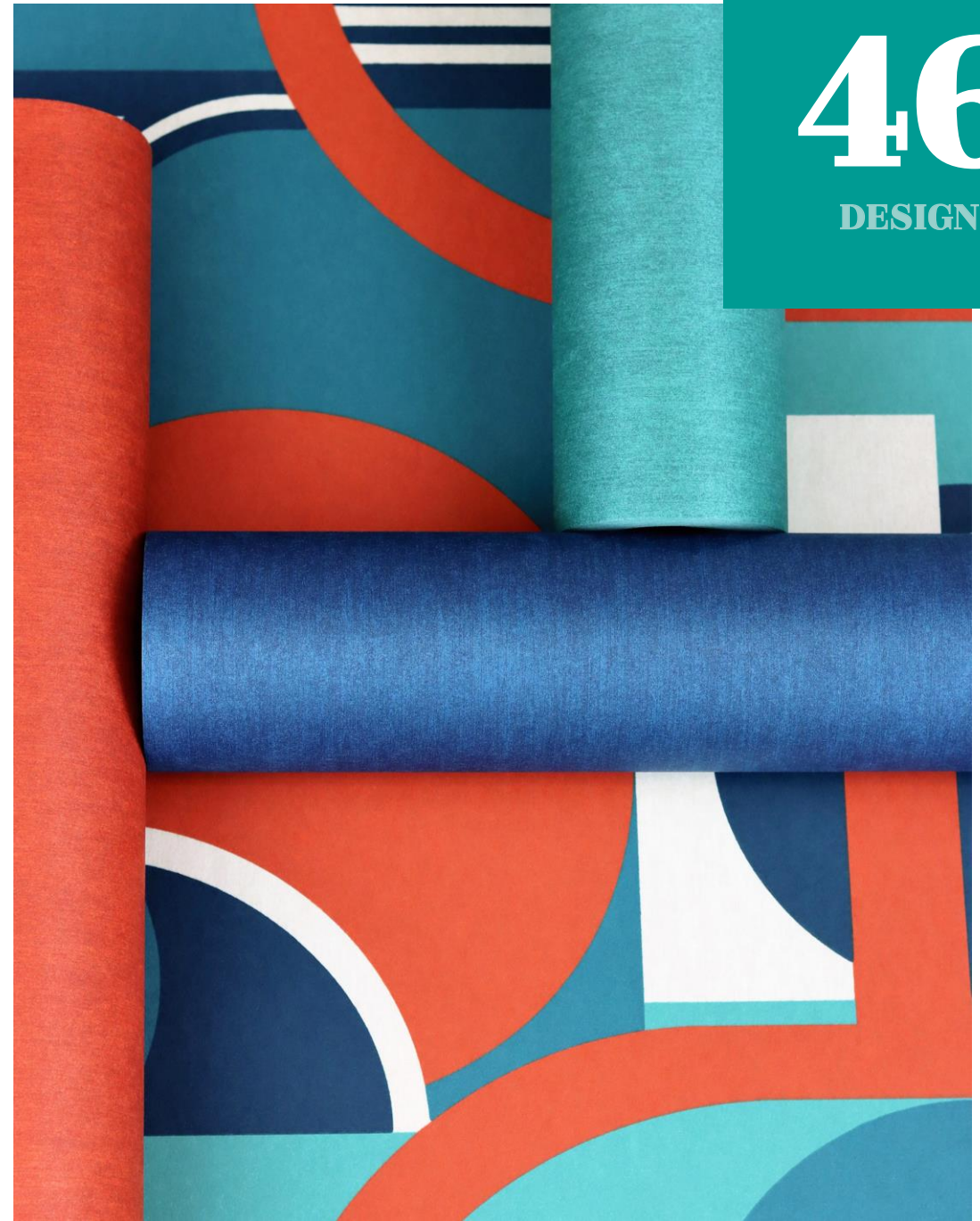




Fall in love with the exciting shapes of the designs **LUIS BARRAGÁN**, **TEATRO COLÓN**, **CONSTRUCTIVISM** or **CARLOS MÉRIDA**. Architectural, three-dimensional, geometric or large-leaf botanical motifs let your walls exude Latin American joie de vivre: Exciting, colourful, a little mysterious and totally trendy. With robust colours juxtaposing in clear matt and gloss, every design becomes a powerful interior statement.



The **CASA MÉRIDA** collection comprises **46 items**. 39 wallcoverings and 7 murals. In addition to subtle living colours such as off-white, linen, sand and moon, there are also real eye-catchers here in Izamal yellow, copper, capsium red, emerald, aqua, ocean, midnight blue, silver, gold and black.



46
DESIGNS

WALLPAPER DESIGNS

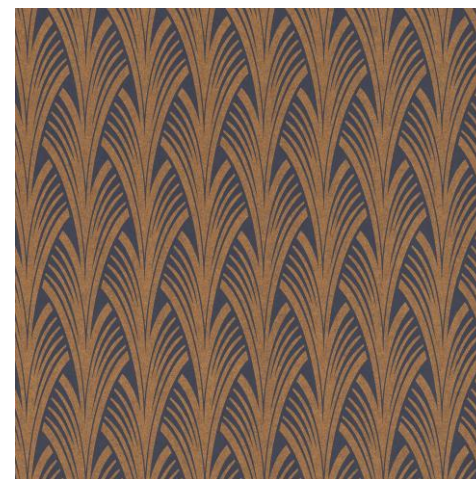




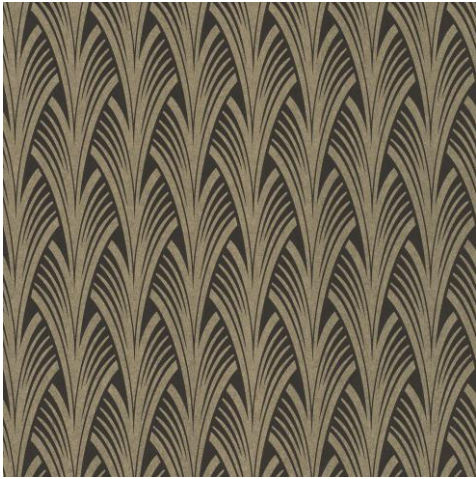
TEATRO COLÓN



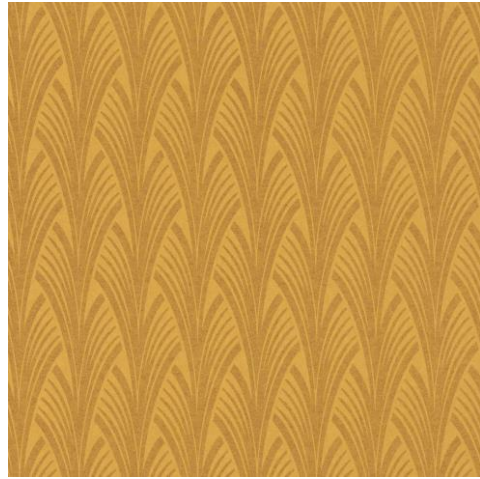
290751



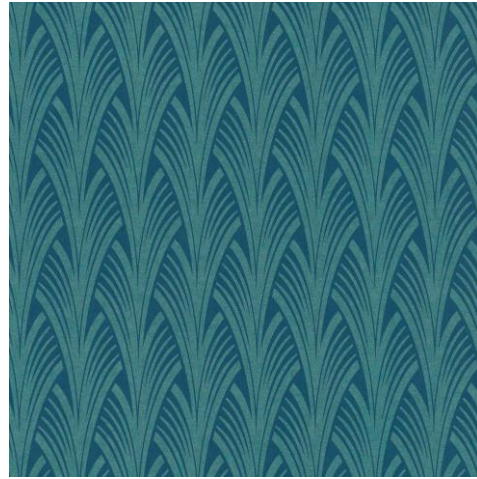
290744



290768



290775



290782

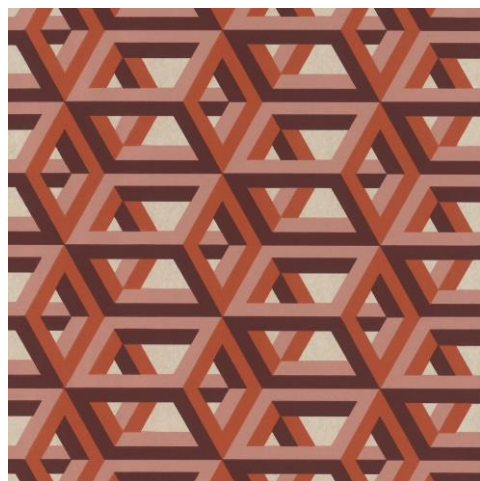


290799





290843



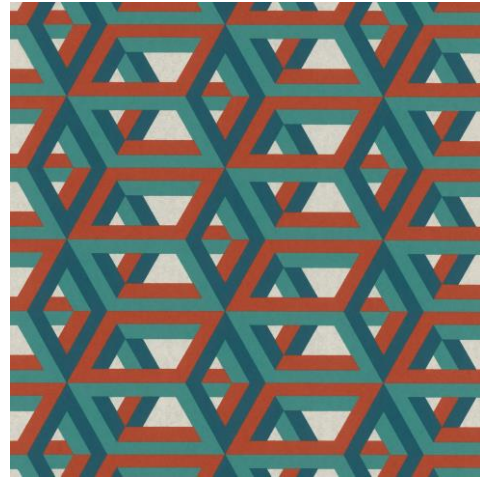
290805

CONSTRUCTIVISM

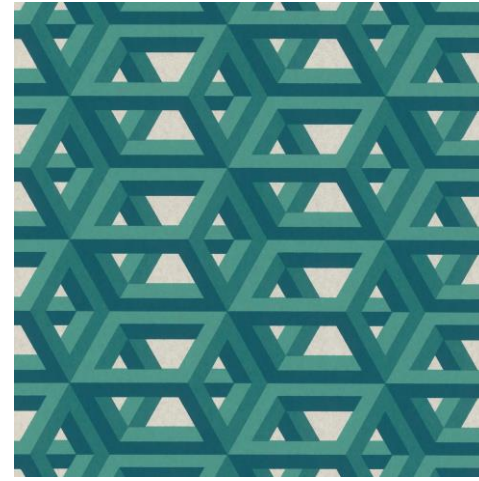




290812



290829



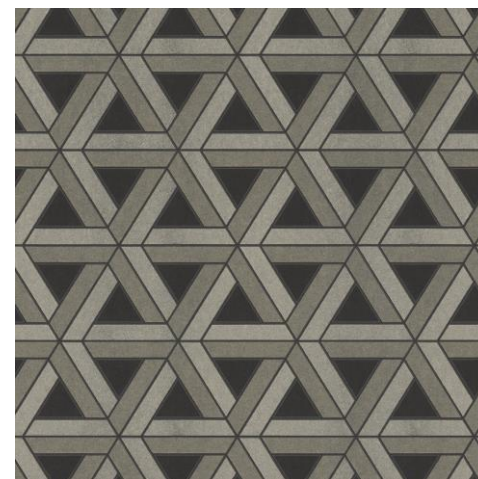
290836



UXIMAL



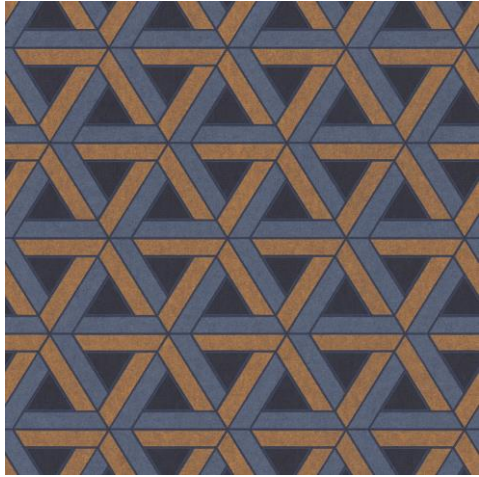
290850



290867



290874

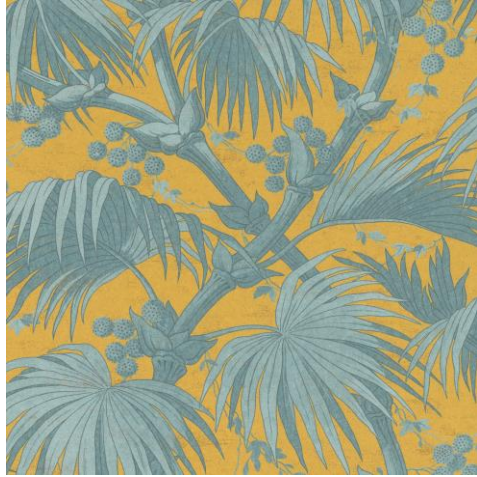


290881

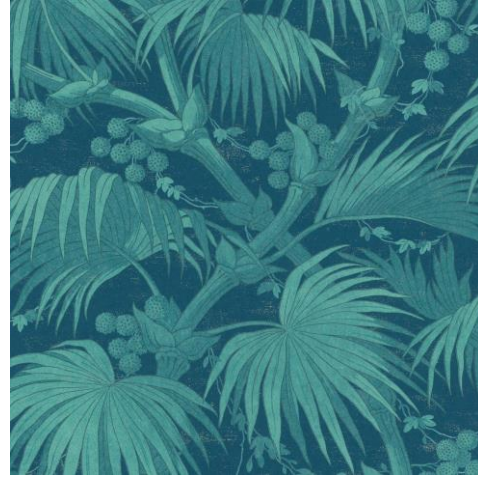




EL PALMAR



290898



290904



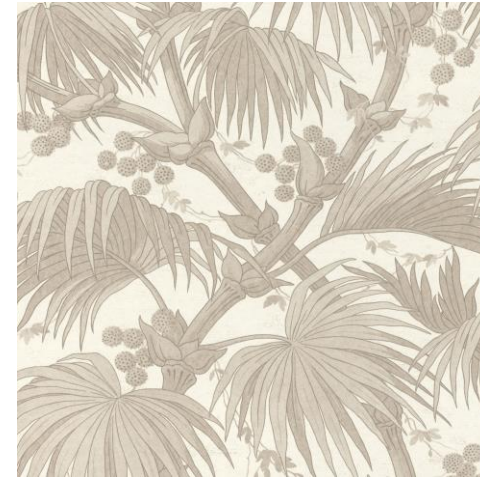
290911



290928



290935



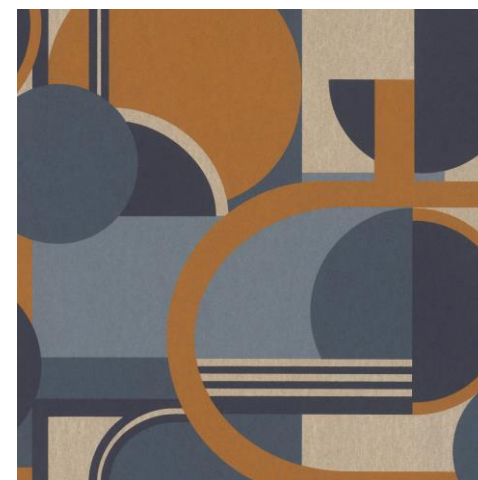
290942



CARLOS MÉRIDA



290959



290966



290973

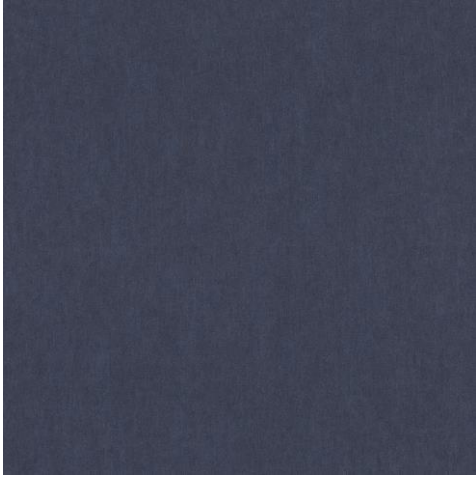


290980

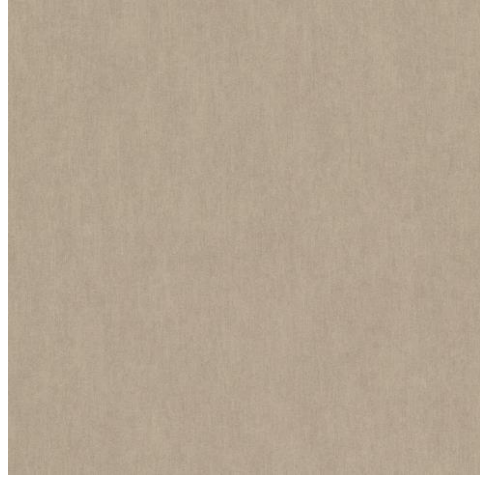




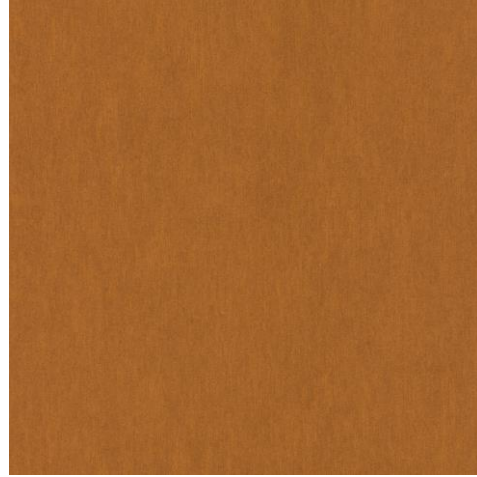
PLAIN



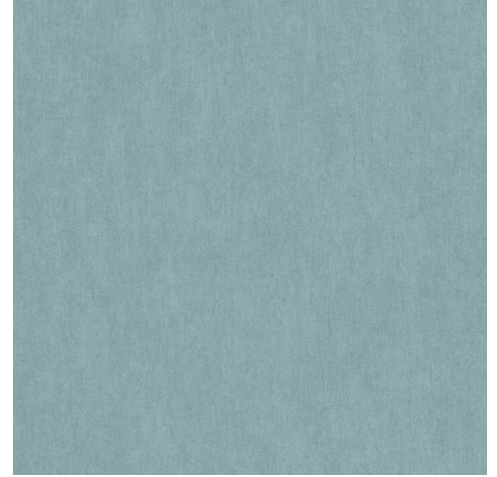
293707



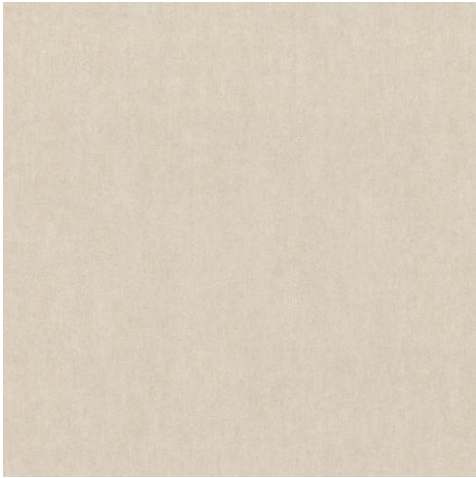
293714



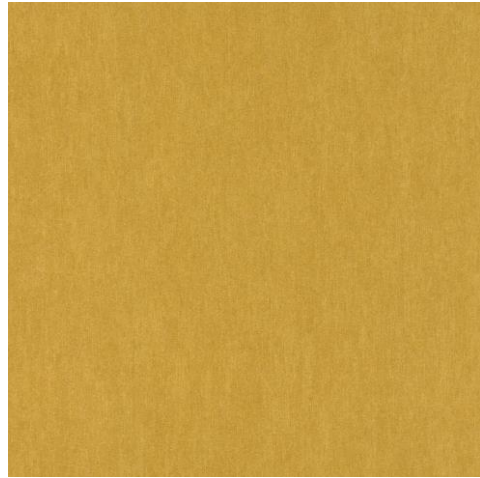
293721



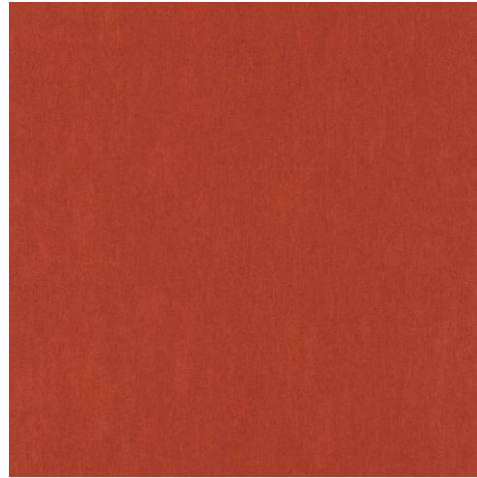
293738



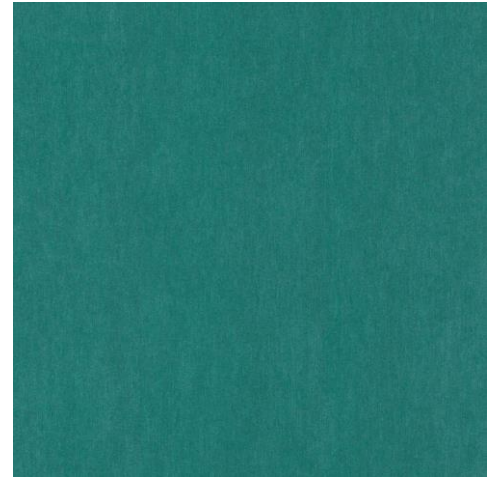
293745



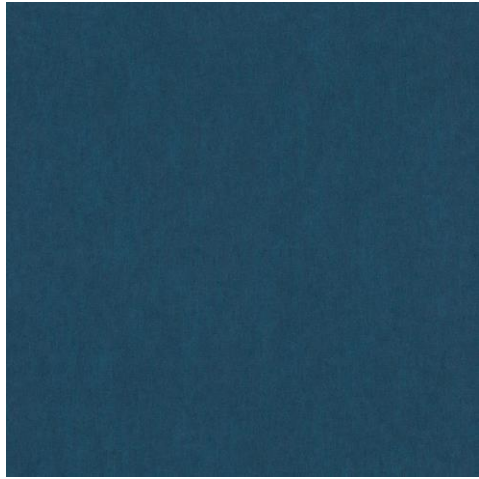
293752



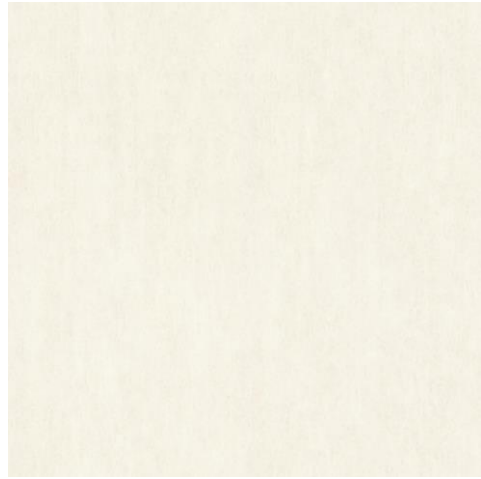
293769



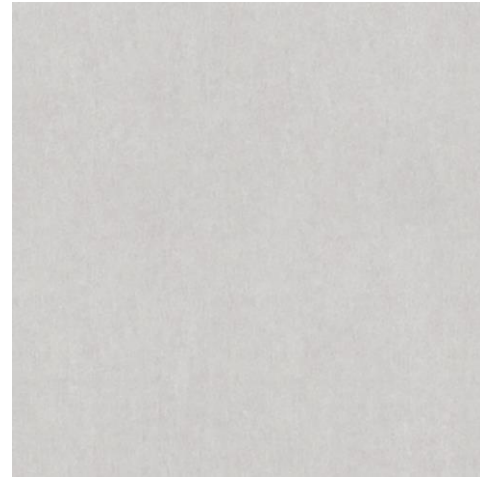
293776



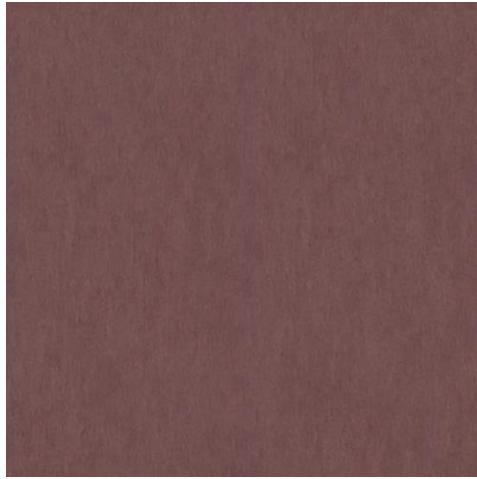
293783



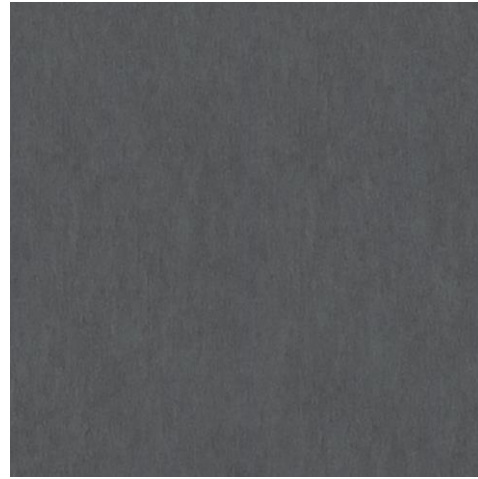
293790



293806



293813



293820



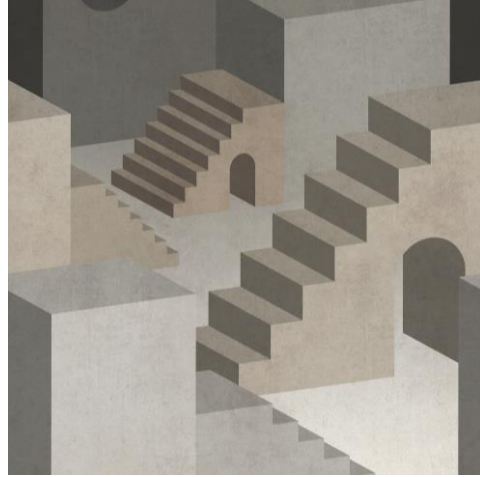
293837

MURALS

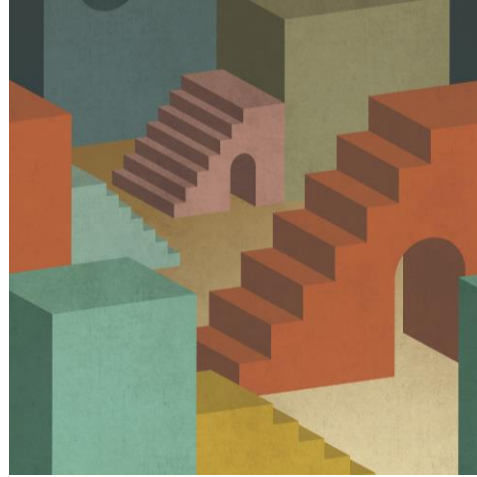




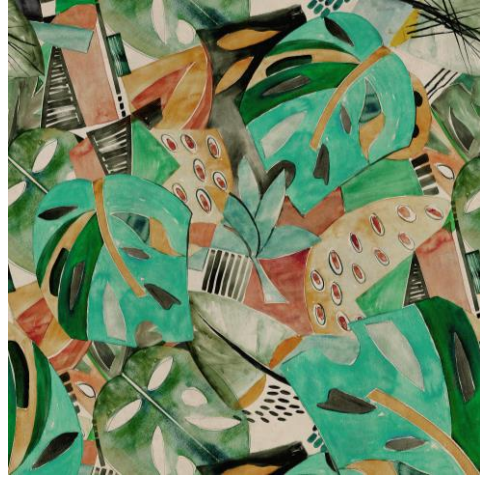
LUIS BARRAGÁN



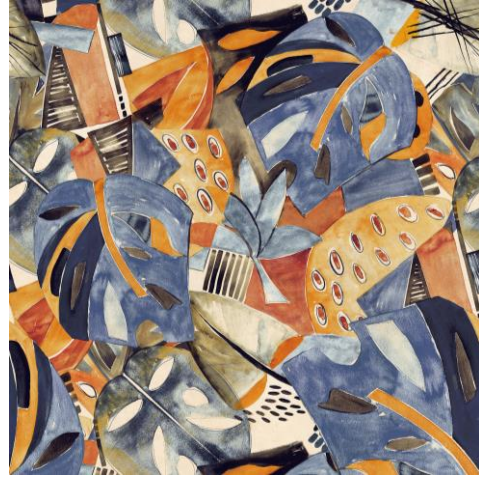
291093



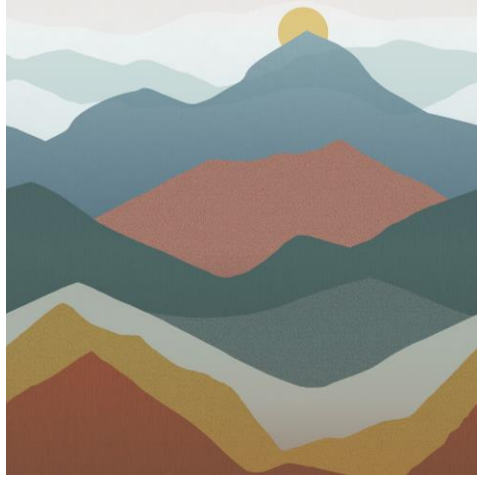
291086



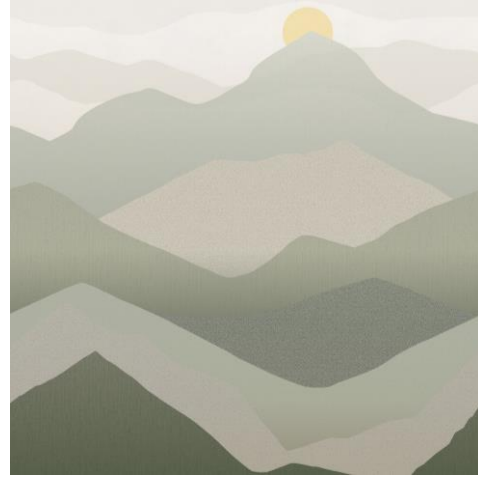
291116



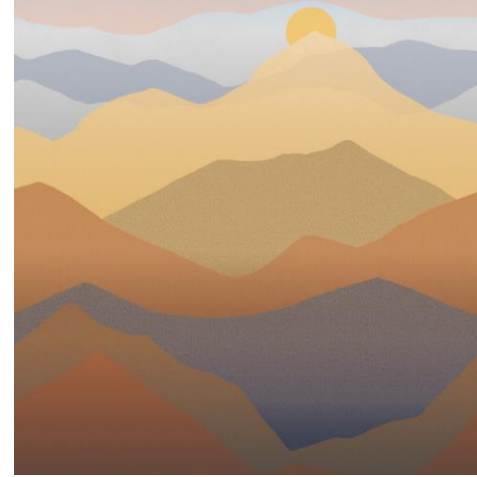
291109



291277



291307



291376

A stylized landscape illustration in shades of grey, brown, and teal. It features rolling hills and mountains. A teal square is positioned in the upper left, and a golden sun is in the upper right. The text 'CASA MÉRIDA' is centered in a white serif font within a white rectangular border.

CASA MÉRIDA