

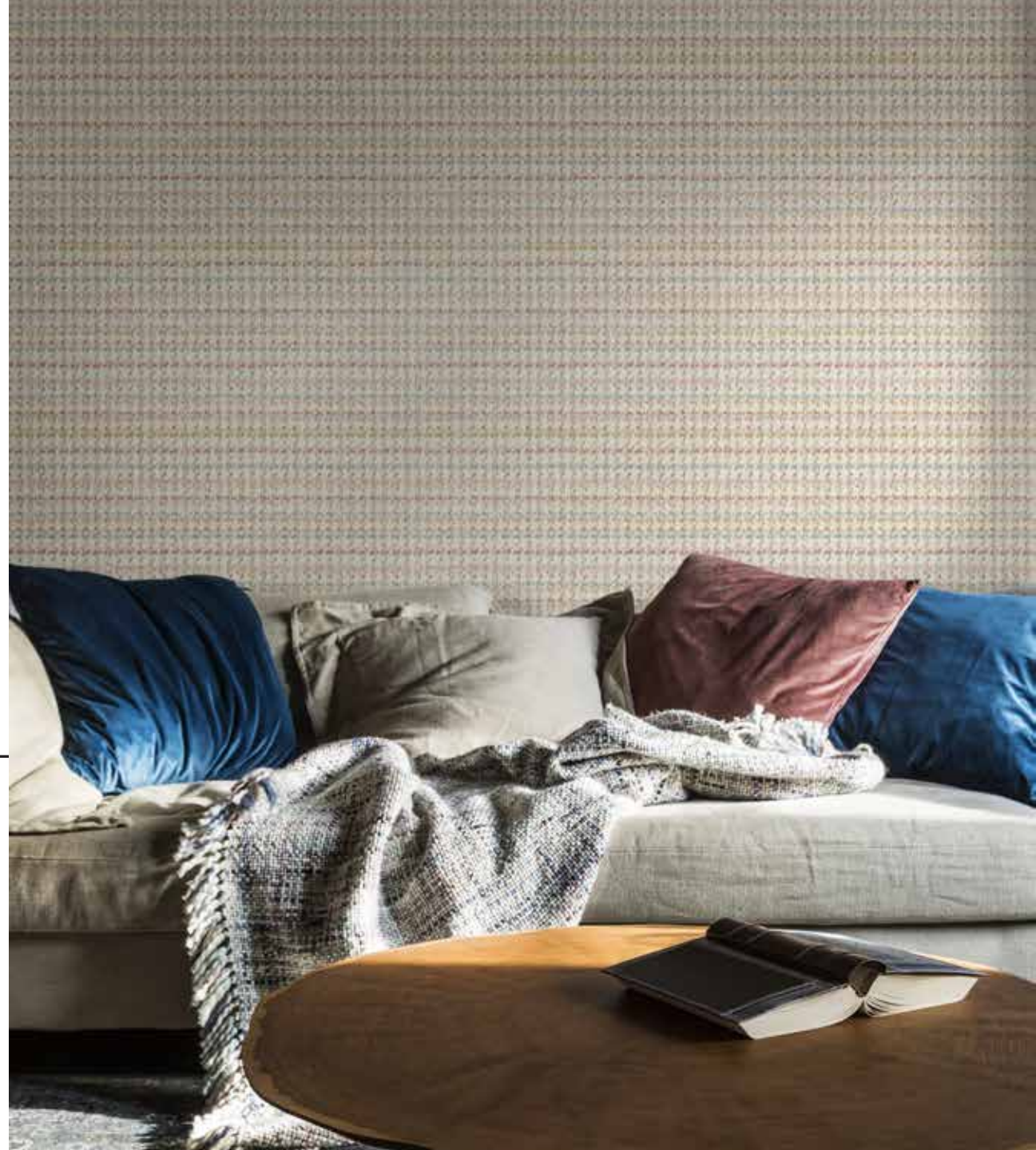


LIENZOS

# OXFORD

---

Fine feathers make fine birds? –  
And fine wallcoverings make fine  
walls!





Trying out new things, exploring new avenues and helping to shape the world of tomorrow - these are the challenges that excite our creative minds. True to the motto: **"What we do today will determine what the world of tomorrow will look like."\***

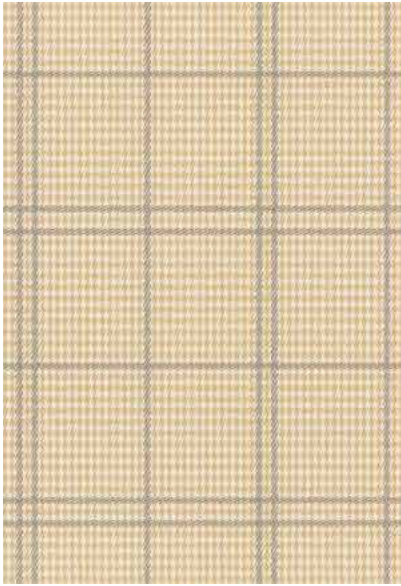
So we have asked ourselves: Given that "apparel maketh the man", how can fine wallpaper do the same for your four walls? What designs, patterns and colours should wallpaper have, and how should it feel to the touch to become a fashionist item?

\*Marie von Ebner-Eschenbach, 1830-1916, author



Our OXFORD collection meets these requirements in a refreshingly new way, and our "wall covering" principle offers a surprising new appearance, for which we have drawn our inspiration from the "layered look" familiar from the fashion world: High-quality 130 g nonwoven is printed with highly fashionable structures from the fashion sector and laminated half-open with a thread of 100% viscose. This lends a material look and feel to our fabrics and adds at the same time the greatest possible lightness to the product. A finely balanced interplay between the upper and bottom layer, from which both sides can only benefit. SHEPHERD'S PLAID or SHEPHERD'S SQUARE features interpretations of the popular hound's-tooth pattern; CHEVRON is gentle despite its typical zigzag, while WILD LINEN delights with a two-tone linen look and CREPE with a narrow vertical rhythm. And while these wallpaper patterns will add a really well-appointed look to your walls, the BLOCKS design in your living room will be an it-piece that sets a fashionable tone and is clean-cut.

The OXFORD collection comprises a total of 41 items: 30 wallpapers were created using the new semi-open laminating technology, while 11 plain-coloured wallpapers were added to our basic range. The wide colour palette ranges from cotton white/nature, cotton white/light blue and cotton white/petrol to nature/multicoloured, black-and-white/grey, warm grey, and slushy beige to rouge/blue, putty/petrol, vanilla/cognac red and brown/rust/grey.



## SHEPERD'S SQUARE

The clearly defined and two-tone patterns of the SHEPERD'S SQUARE is a classic interpretation of the Scottish-style check. A small hound's-tooth pattern, clearly visible against the light background, is overlaid by rough, intersecting embroidered stripes. We offer both subtle and fashionably bold colour combinations: cotton white/nature and cotton white/light blue for a subtle, discreet wall design or black-and-white/grey, cotton white/petrol, cotton white/blue/pink and vanilla/orange/red as expressive, colourful variations.



## BLOCKS

Our must-have accessory in the OXFORD collection is the BLOCKS wallpaper – the design with a difference. This it-piece is eye-catching and emphasises the owner's fashion awareness. It confidently sets the tone, with clearly-defined, multi-coloured rectangles stacked like a card house. BLOCKS is available in the colour combinations nature/slushy beige, grey/anthracite blue, cream/blue/pink/turquoise and grey/anthracite/rust.



## CREPE

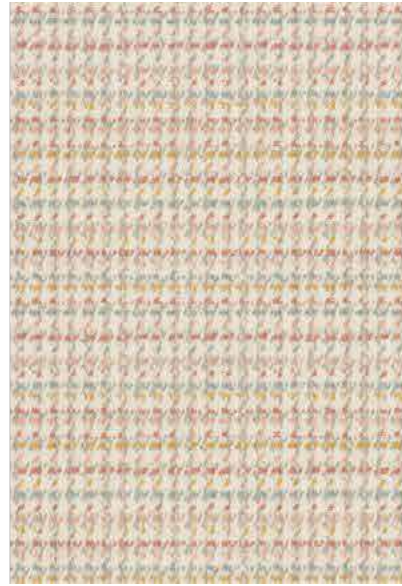
Our monochrome wallpaper with a crepe structural effect. Staggered in horizontal stripes, the pattern produces a delicate vertical structure, which is available in 6 colours: cotton white, slushy beige, warm grey, putty, brown and turquoise.



## WILD LINEN

Our monochrome wallpaper with a used linen structural effect.

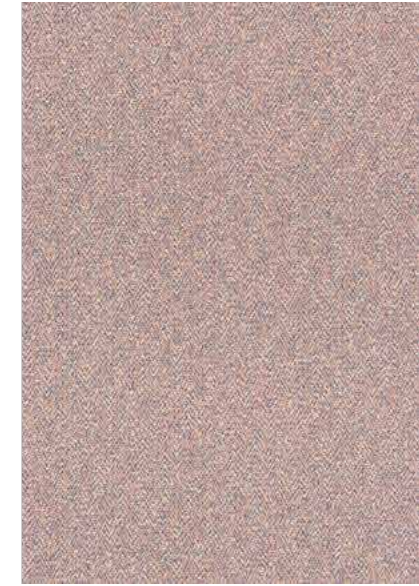
When high-quality products have been used for a long time, they often gain special value through elegant signs of use. This is the look we have reproduced on our Wild Linen wallpaper. With two complementary structures, we have created an exciting tricolour scheme, which appears slightly worn. WILD LINEN is available in nature, putty/petrol and blue/cotton white.



## SHEPHERD'S PLAID

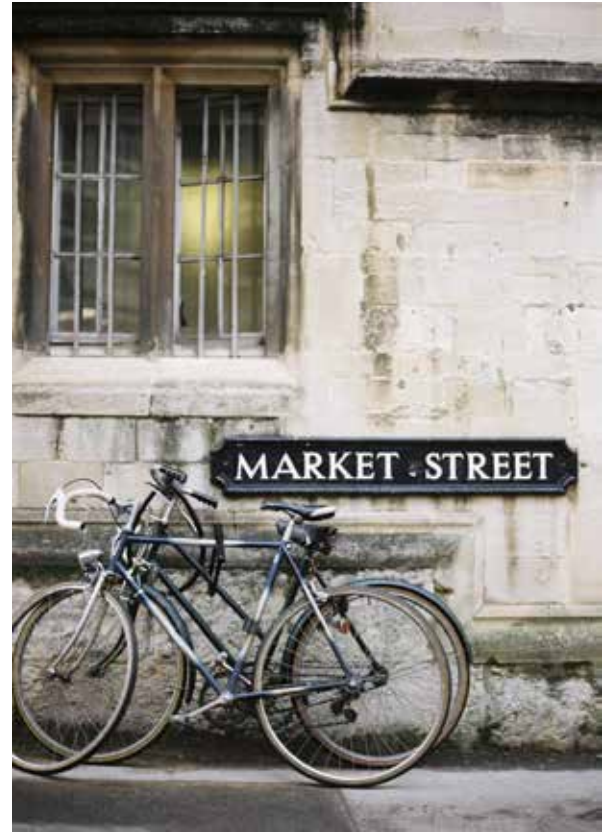
Our monochrome wallpaper with a multi-colour effect.

The original Shepherd's Plaid colour scheme is black-and-white. However, for our wallpaper, we have recreated it in a multi-coloured weft look, which gives our design a more pronounced woven texture and depth. In addition, it incorporates a soft hound's-tooth pattern. This is how our SHEPHERD'S PLAID will recreate a warm and cuddly soft look on your walls. The nature/multi-colour and grey/brown/rusty colour combinations are absolute highlights.



## CHEVRON

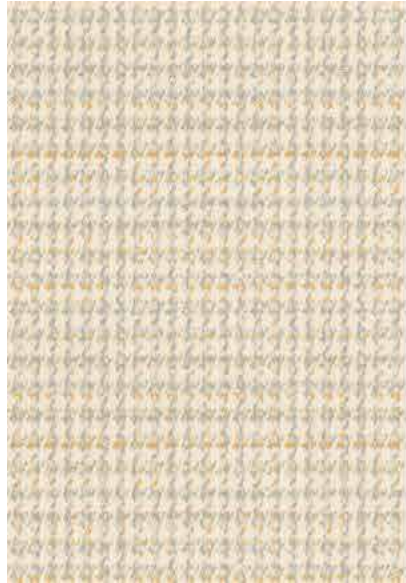
Our monochrome wallpaper with a fishbone structural effect. We structured it into two colours, softly overlaid and staggered against each other. Depending on the colour scheme, the plain colours appear calm and even, or fresh and revitalising: off-white/petrol, blue/pink or cognac red are among the expressive colour combinations, while colour shades such as nature, slushy beige or cotton white/light blue produce a more reserved look.



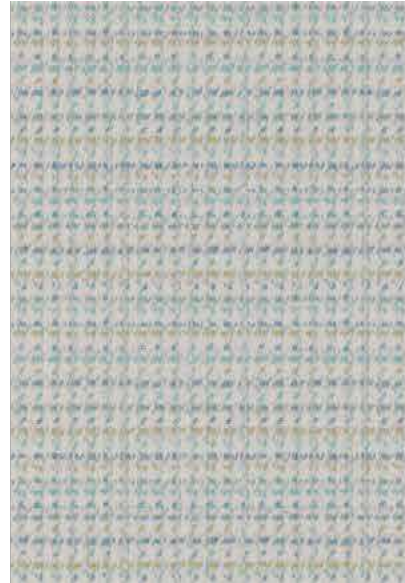
Wallcoverings



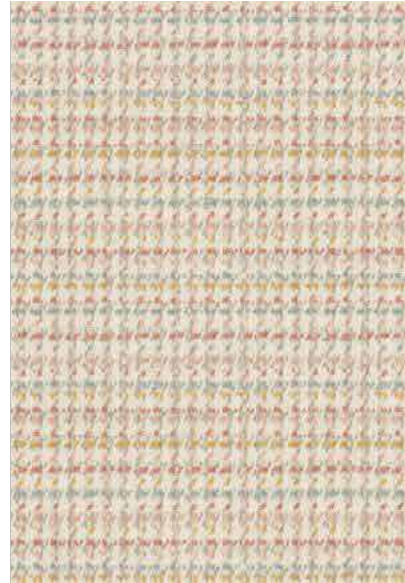
089782



089799



089805



089812

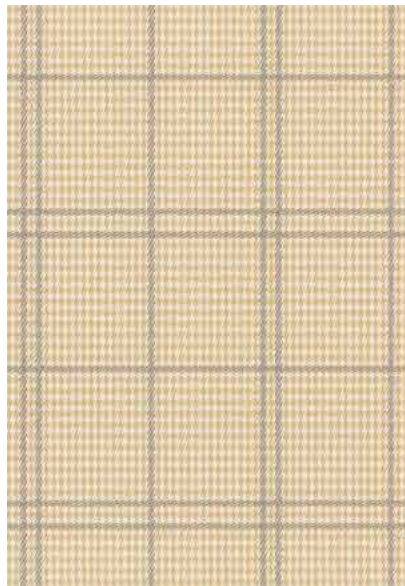








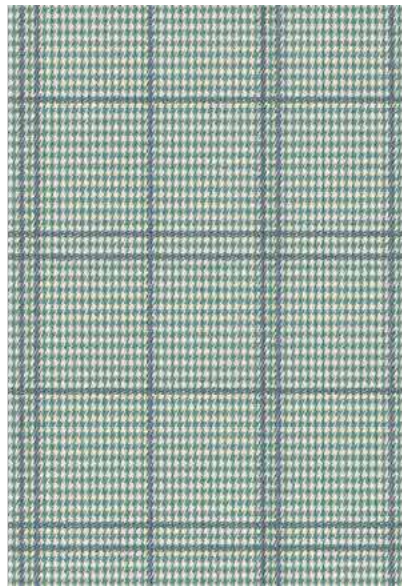
089737



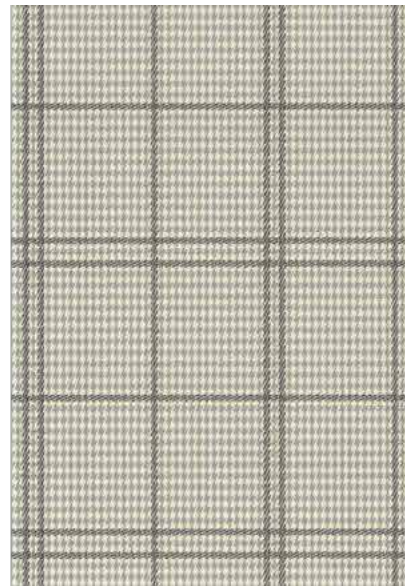
089744



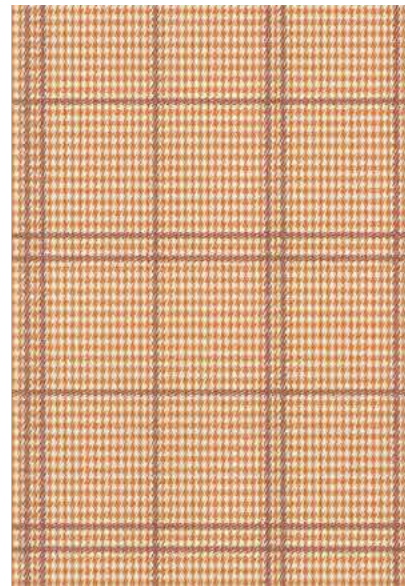
089751



089768



089775







089652



089669



089683



089690









089706



089713



089720



088990







089829



089836



089843



089867



089881



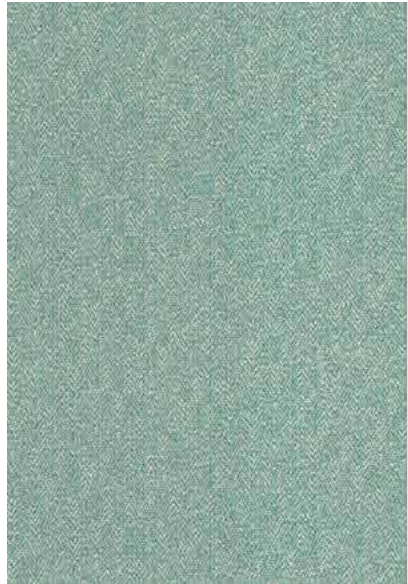
088976







089652



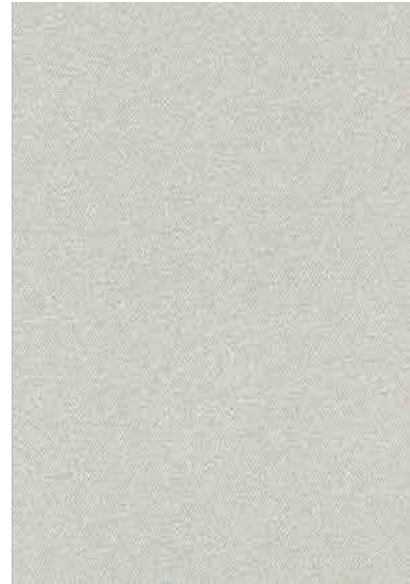
089669



089683

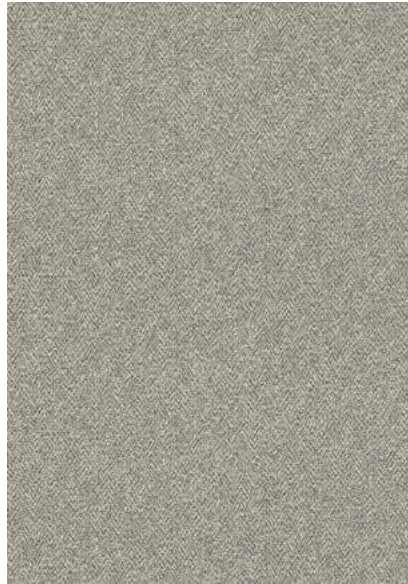


089690

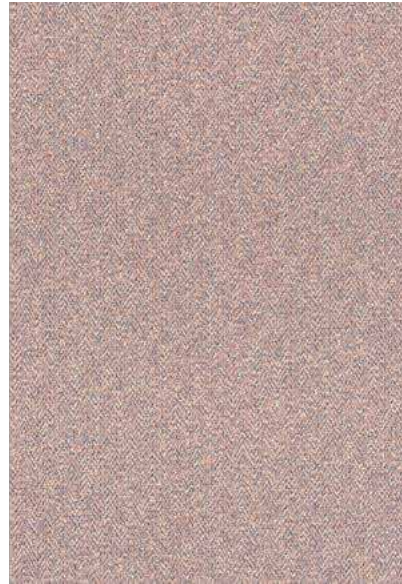




089621



089638



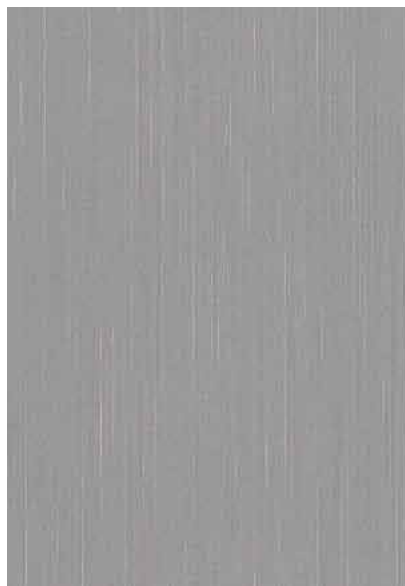
089645



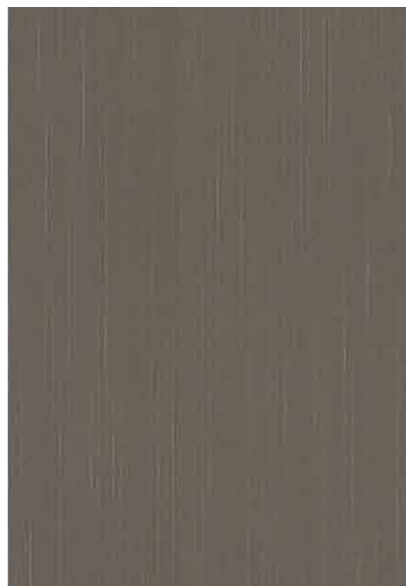




093123



093130



093147



093154



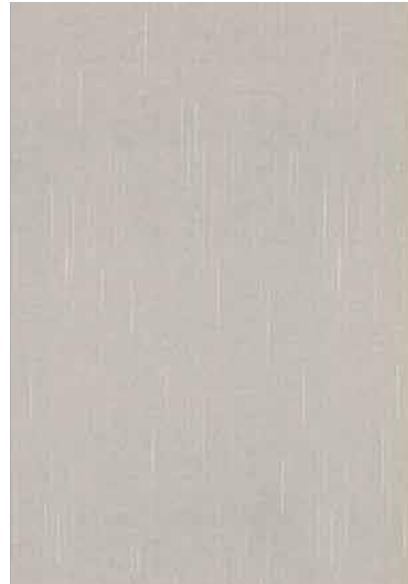
093161



093178



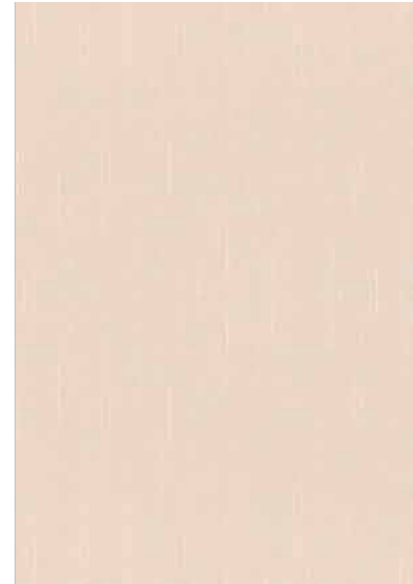
093185



093192



093208



093215



093222





LIENZOS

# OXFORD

---

