



LIENZOS

SAKURA

FRESHLY INSPIRED AND STRONGLY COMBINED





It is back!

Our popular and deeply relaxed feel-good collection. With new designs and trendy colours for living environments, SAKURA is the star in the segment for naturally beautiful wallcovering collections and enters the shapely and colourfast footsteps of its predecessor, the Rivera collection. You get what you want from us:

Atmospheric, yet easy-to-understand designs, plus our popular linen unfold in a wide range of colours. Whether in the entrance area, bedroom or living room: You have the images in your head straight away.

SAKURA serves to reflect different styles in the thematic fields of botanicals and wildlife: Exotic seduction as a result of the SAFARI and ELDORADO designs, Asian elegance on the BAMBOO and SAKURA wallcoverings and the native plant world with the FLOWERFIELD motif. The geometric design of RHOMBUS creates a neutral connection of all motifs in its soft design.

THE 19-PIECE PLAIN SERIES IN A LINEN LOOK PERFECTLY COMPLEMENTS THE 6 DESIGNS AND COVERS A WIDE RANGE OF COLOURS:

Cotton White, Powder and Soft Rouge, linen shades in Sand, Caramel, Slushy Beige and Vintage Moss, stone colours in Frozen Grey, Cliff Grey, Broken Stone, Mud Grey, Moon Grey and Anthracite, green shades in Egg Shell, Sage Green and Cottage Green, blue shades in Deep Aqua and Blue Jeans and a warm yellow shade in Cognac.

In the background of each design, the unistructure is repeated, resulting in optimal combination possibilities.

This collection was produced using the popular Airknife technology with gravure printing on a 130 g high-quality nonwoven fabric. The classic block stripe in a linen look from Unis rounds off the 49-leaf assortment.



SAKURA



SAKURA

What is simply good stays in: The Japanese spring classic from Rivera is an absolute must-have.

And we're adding the basic shades of Cottage Green and Frozen Grey to our Hanami flower on Cotton White, Slushy Beige and Deep Aqua. Invite your friends and celebrate a Hanami in your living room. Kanpai!



SAFARI

Do you also remember the introduction from the film 'Out of Africa'? A herd of wild animals that is seen crossing the steppe, a steam engine that spits its way through endless expanses. The SAFARI design captures this feeling of the wild and a sense of wanderlust. This is where zebras, rhinos, buffaloes, lions, giraffes and the ostrich can be found, as well as animals from the rainforest – gorillas, monkeys and cheetahs. Thanks to the targeted use of matt and shimmering colours, the animals come into the foreground in three dimensions. The raised acrylic paint creates the connection to the linen unfold.

SAFARI is available in Cotton White, Sand, Cognac, Mud Grey, Cliff Grey and Anthracite.



FLOWERFIELD

When the sun sets over damp, cool, foggy fields, we say goodbye to summer and autumn with all its colours and moods. The FLOWERFIELD design is characterised by this delicately dreamy look. With glossy accents, Egg Shell, Slushy Beige and Moon Grey reflect the typical colour change of the season. Another special feature is the softly filtered linen uni structure in the motif.



BAMBOO

We love bamboo and think it deserves a new look.

That's why we present BAMBOO with a fine brush stroke and in a high-quality matt/gloss look. Against the backdrop of the linen unfold structure, a great eye-catcher in 5 complexions: Cotton White-Beige and Cotton White-Powder, Egg Shell-Cognac, Slushy Beige-Grey shades and Sand-Deep Aqua.



RHOMBUS

The very textile-looking RHOMBUS design looks like a coarsely woven plaid.

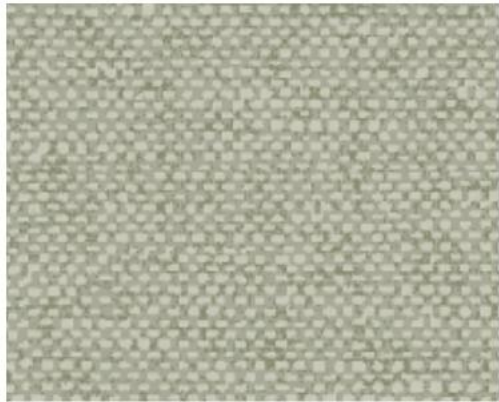
A diamond with a delicate thread and a roughly raised weft thread look has been incorporated into the linen unifold. Cotton White-Sand, Frozen Grey-Anthracite, Caramel-Blue Jeans and Slushy Beige-Broken Stone are offered as colours.



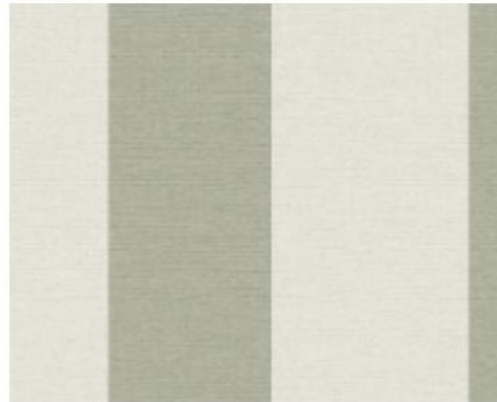
ELDORADO

An eldorado for little paradise birds or those who want to be. Multicoloured leaves in all shapes are placed on the wall in a lively manner. The singers of the forest tweet away happily in the middle of it. This design simply puts you in a good mood, regardless of the colour combination:

Cotton White-Natural White, Cotton White-Multicolored, Caramel- Stone, Red and Caramel and Blue Jeans-Orange. The design is particularly exotic on an anthracite-coloured background in vibrant petrol and red tones.



PLAINS



STRIPES



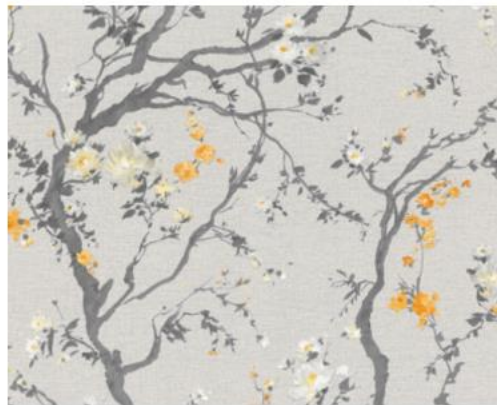
SAKURA



SAKURA



291253



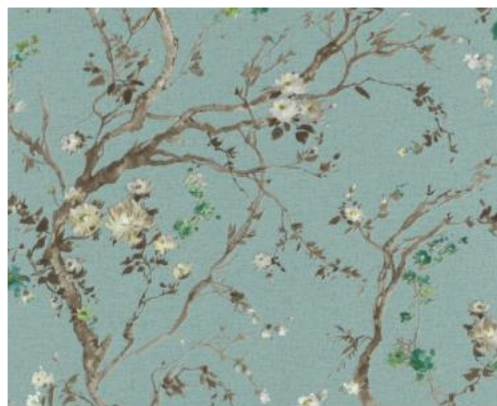
291260



291604



295879



295886



SAKURA



SAKURA



291451



291468



291499



291505



291550





SAKURA



291574



291581



291598



SAKURA



SAKURA



291284



291291



291321



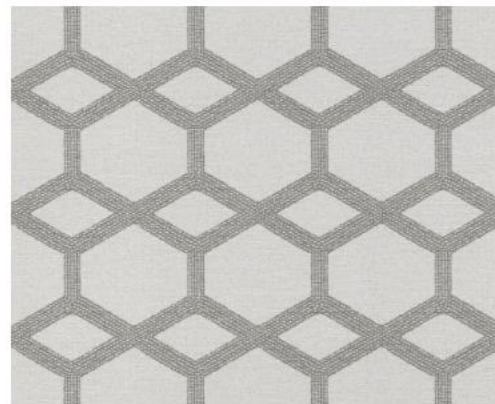
SAKURA



SAKURA



291413



291420



291437



291444



SAKURA



SAKURA



291369



291390



291406



292144

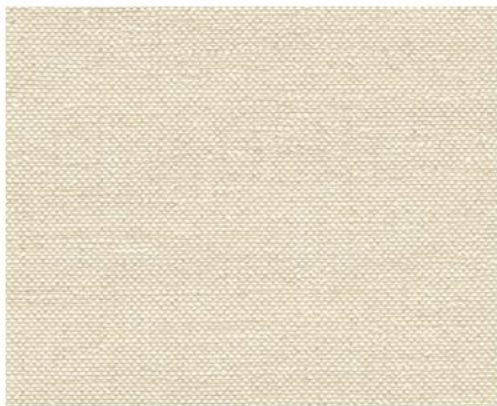


292151





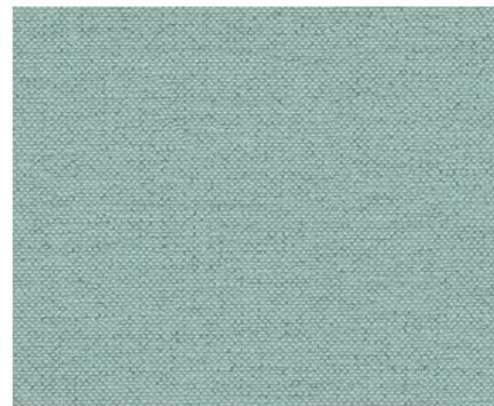
SAKURA



295527



295541



295558



295565



295572



295589



295596



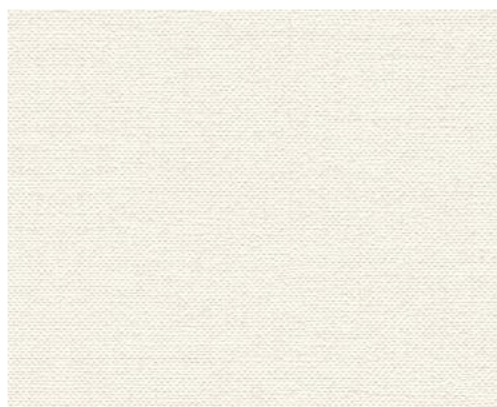
295619



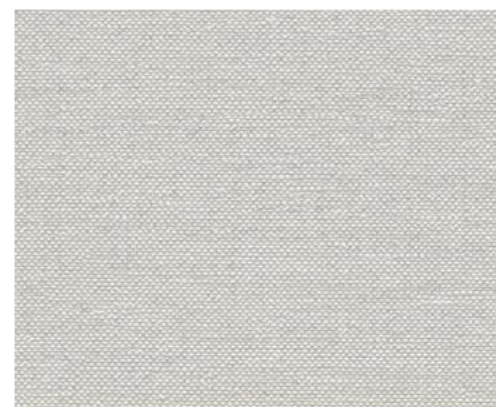
295626



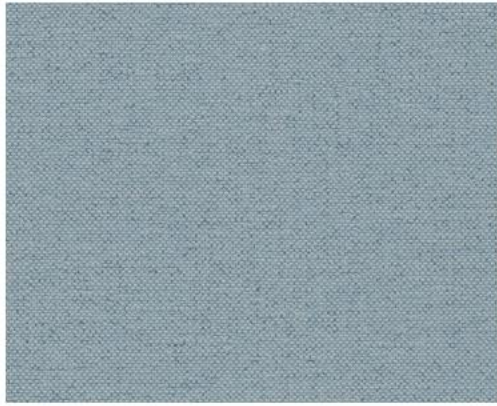
295633



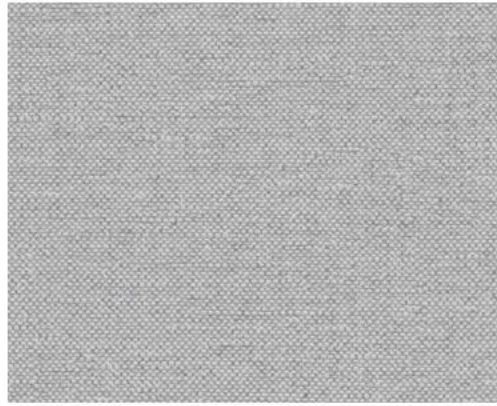
295640



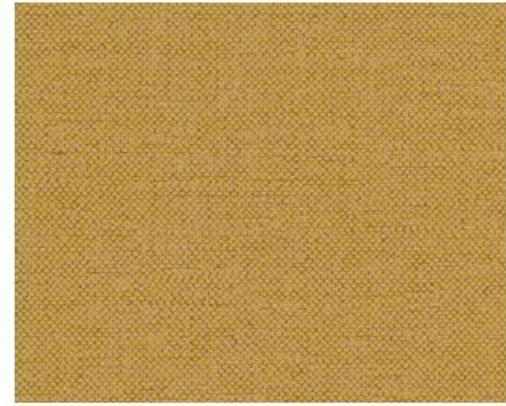
291123



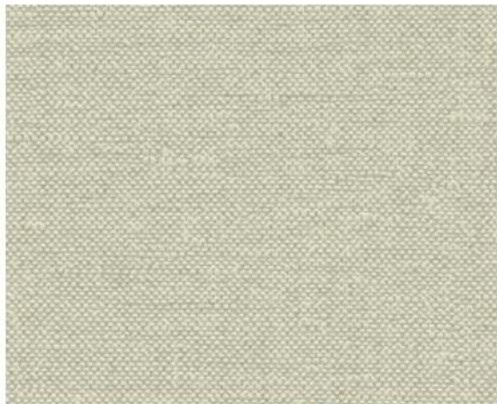
291130



291147



291154



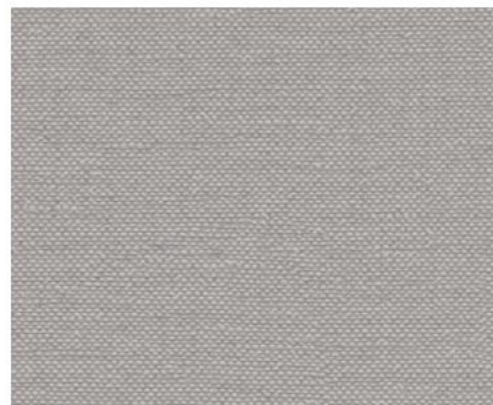
291178



291185



295695



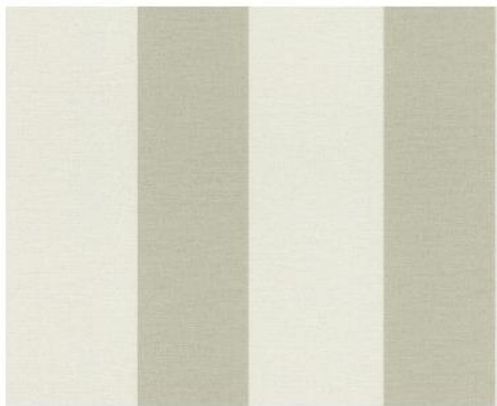
296005



SAKURA



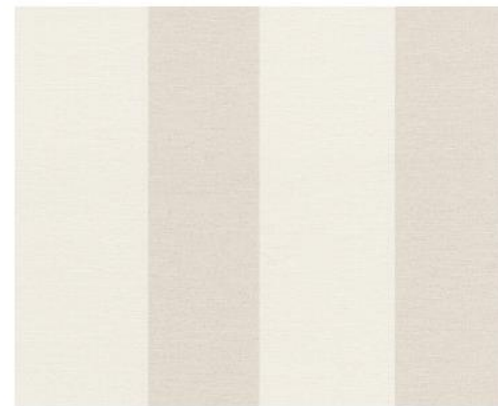
SAKURA



291246



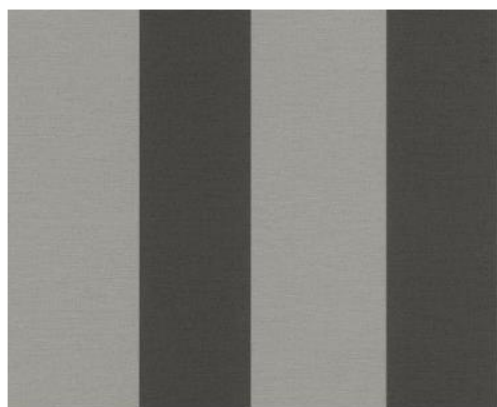
295725



295732



295749



295756

A modern dining room featuring a long, light-colored wooden table. Several copper-colored pendant lights of various shapes hang above the table. A large, clear glass vase filled with greenery and orange flowers sits on the table. In the background, there is a dark wall with a textured, embossed pattern and a dark wooden cabinet. A large, semi-transparent circular graphic is overlaid on the right side of the image.

SAKURA



LIENZOS