



CASAMANCE
AZUL



CASAMANCE

Casamance s'engage pour l'environnement.
Nous croyons en la responsabilité que nous avons envers la planète,
et nous nous efforçons constamment de réduire notre empreinte écologique
tout en créant des produits exceptionnels pour nos clients.

*Casamance is committed to protecting the environment.
We believe in the responsibility we have towards the planet,
and we constantly strive to reduce our ecological footprint
while creating exceptional products for our customers.*



Scan me for more details.
Scannez-moi pour plus de détails.



CASA AZUL





7631 0610



7633 2854





7630 04 06

7632 16 30

7633 37 72





7634 36 70

7633 22 42



7630 01 00

7633 17 32

7633 24 46







7630 02 02

7633 30 58

7633 27 52











7633 38 74

7632 11 20



7630 03 04

7633 33 64









7630 05 08

7633 34 66

7633 35 68



7632 15 28

7633 25 48





LIENZO PLAINS / UNIS LIENZO



7633 22 42



7633 23 44



7633 25 48



7633 24 46



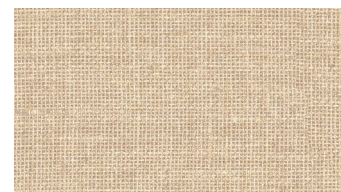
7633 29 56



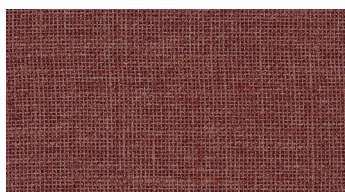
7633 28 54



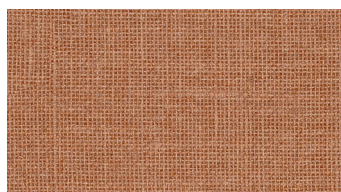
7633 27 52



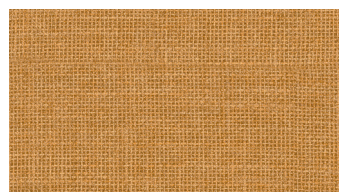
7633 26 50



7633 33 64



7633 32 62



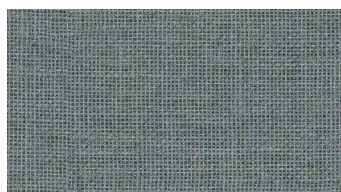
7633 31 60



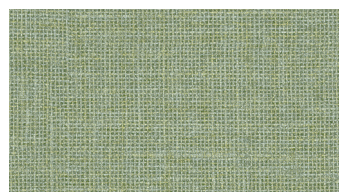
7633 30 58



7633 34 66



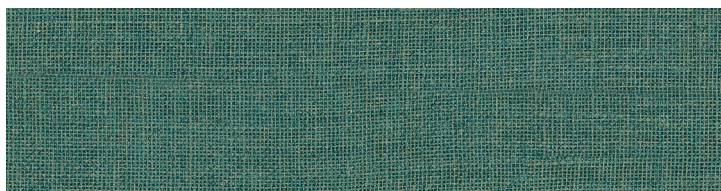
7633 35 68



7633 37 72



7633 36 70



7633 39 76



7633 38 74

TEHUANA
7630 ...



27 1/2" - 70 cm

27 1/2" - 70 cm

7630 04 06



7630 01 00



7630 02 02



7630 03 04



7630 05 08

TALavera
7631...



31 1/2" - 80 cm

27 1/2" - 70 cm

7631 06 10



7631 09 16



7631 08 14



7631 07 12

MESTIZO
7632 ...



25 1/2" - 64 cm

27 1/2" - 70 cm

7632 16 30



7632 11 20



7632 10 18



7632 12 22



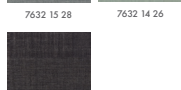
7632 13 24



7632 15 28



7632 14 26



7632 17 32

NAHUA
7634 ...



le 1/8 - drop 1/8 le 2/8 - drop 2/8 le 3/8 - drop 3/8 le 4/8 - drop 4/8 le 5/8 - drop 5/8 le 6/8 - drop 6/8 le 7/8 - drop 7/8 le 8/8 - drop 8/8

118" - 300 cm

26 3/4" - 68 cm

214 1/4" - 544 cm

7634 36 70







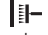





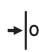


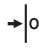






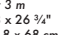


7634 37 72

CASA AZUL

PATTERN DESSIN - ZEICHEN TEKENING - DISEGNO DUJUBO - РИСУНОК	PATTERN NUMBER RÉFÉRENCE - ARTIKELNUMMER ARTIKELNUMMER - REFERENCIA REFERENZA - АРТИКУЛ	MATCH RACCORD - RAPPORT RAPPORT - RACOR RAPPORTA - ПОДГОН	WEIGHT POIDS - GEWICHT - GEWICHT - BEC PESO - PESO - BEC	FIRE RATED CLASSEMENT AU FEU - BRANDKLASSE - BRANDKLASSE - PRUEBLA AL FUEGO - RESISTENZA AL FUOCO - НЕГОРЮЧИЙ СТАНДАРТ	DIMENSIONS DIMENSIONS - ABMESSUNGEN AFMETINGEN - MEDIDAS DIMENSIONE - РАЗМЕРЫ	TECHNICAL DETAILS CARACTÉRISTIQUES - PRODUKTBESCHREIBUNG TECHNISCHE SPECIFICATIES CARACTERÍSTICAS TÉCNICAS - DATI TECNICI - ХАРАКТЕРІСТИКИ
--	---	---	--	---	---	---

NON-WOVEN BACKED VINYL

DESIGNS / DESSINS	Tehuana - 7630 ...	 Straight match Raccord droit Repeat - 27 1/2" Rapport - 70 cm	400 g/m ² 11 3/4 oz/Yd ²	 <p>EU: Euroclass B-s2, d0 US: ASTM E 84 Class A</p> 	 Width 27 1/2" Largeur 70 cm	 Length 11 yds Longueur 10,05 m	 Extra washable Lessivable  Paste the wall Encollage du mur  Good light fastness Bonne résistance à la lumière  Dry strippable Arrachable à sec
	Talavera - 7631 ...	 Offset match 1/2 Raccord sauté 1/2 Repeat - 31 1/2" Rapport - 80 cm	330 g/m ² 9 3/4 oz/Yd ²		 Width 27 1/2" Largeur 70 cm	 Length 11 yds Longueur 10,05 m	
TEXTURE / TEXTURE	Mestizo - 7632 ...	 Free match Raccord libre Or / Ou Offset match 2/3 Raccord sauté 2/3 Repeat - 25 1/4" Rapport - 64 cm	400 g/m ² 11 3/4 oz/Yd ²		 Width 27 1/2" Largeur 70 cm	 Length 11 yds Longueur 10,05 m	
PLAIN / UNI	Lienzo - 7633 ...	 Free match Raccord libre  Invert the stripes Lés inversés	400 g/m ² 11 3/4 oz/Yd ²		 Width 27 1/2" Largeur 70 cm	 Length 11 yds Longueur 10,05 m	
WALLPANEL / PANORAMIQUE	Nahua - 7634 ...	 Straight match Raccord droit  Wallpanel repeat endlessly horizontally Panoramique raccordable horizontalement	330 g/m ² 9 3/4 oz/Yd ²		 Length 118" Hauteur 3 m Width 8 x 26 3/4" Largeur 8 x 68 cm	 Full height 118" Hauteur complète 3 m Full width 214 1/4" Largeur complète 544 cm	

GB HANGING RECOMMENDATIONS
Paste the wall using paste specially adapted for non woven and non-woven backed vinyl wallcovering.
USA These hanging recommendations are given for information only. Detailed instructions are included in each order.

F MÉTHODE DE POSE
Encollage de mur avec une colle adaptée au revêtement mural tissé et vinyle sur tissé.
Ces conseils de pose sont donnés à titre indicatif. Une notice de pose détaillée est jointe à chaque envoi.

E MÉTODO DE COLOCACIÓN
Utilizar una cola adecuada para un soporte no tejido, poner la cola directamente en la pared.
Estos consejos para la colocación son a título indicativo ya que en cada producto encontrarán las instrucciones detalladas del modo de colocación.



You can find the collection here
Retrouvez la collection ici

CASAMANCE



CAZSHO
SHOW ROOM CASA AZUL



3 666922 000114

